

Dr. Amit Garg Coaching Learners in the Research Process 2004 – 2022

Research Training Goals: (1) To foster high-quality training in areas clinical, health services, population health, knowledge transfer and health policy kidney research, (2) To help learners at various levels achieve international research success (high-impact publications, peer-reviewed grants, podium presentations, awards, research that improves health, healthcare and policy), and (3) To support career success.

Last Update: August 8, 2022. **Listed are persons where Dr. Garg served as a primary research supervisor.**

Trainee Type	Total	Trainee Scholarships/ Fellowships (Total & Amount)	Trainee Listed as an Investigator on Grant (Total & Amount)	Trainee Podium Presentation at Major Conference	Trainee Research Awards	Trainee Publications (Any Author)	Trainee Publications (First or Last Author)
Training Clinician Investigators	12	12 \$1,430,000	18 \$5,359,966	11	23	130	52
Graduate (MSc/PhD) students	25	60 \$1,836,600	40 \$11,589,714	21	24	255	107
Internal Medicine residents	11	-	6 \$922,953	7	12	20	16
Medical students	14	4 \$5,000	3 \$298,993	-	7	29	12
Undergraduate students	19	2 \$35,000	4 \$216,303	1	-	52	20
Totals	81	78 \$3,306,600	71 \$18,387,929	40	66	486	207

Journal	Training Clinician Investigator		Graduate Student (MSc/PhD) and Post-doctoral Student		Internal Medical Residents		Medical Students		Undergraduate Students		TOTAL		Journal Impact Factor
	First/Last Author	Total	F/L Author	Total	F/L Author	Total	F/L Author	Total	F/L Author	Total	F/L Author	Total	
New Eng J Med	0	2	0	2	0	0	0	0	0	0	0	4	52
JAMA	0	5	3	4	0	0	0	1	0	1	3	11	30
BMJ	0	2	1	4	0	0	0	0	0	0	1	6	17
Ann Intern Med	0	3	3	8	3	3	0	0	0	0	6	14	14
JAMA Intern Med	1	1	0	1	0	0	0	2	0	0	1	4	11
J Am Soc Nephrol	3	7	3	7	2	3	0	4	0	3	8	24	9
Kidney Int	3	12	4	9	2	2	1	1	1	3	11	27	8
Am J Gastroentrol	0	0	0	2	0	0	0	1	0	1	0	4	8
CMAJ	2	6	3	9	1	1	1	1	3	5	10	22	6
Ann Surg	1	1	0	1	0	0	0	0	0	0	1	2	6
Am J Transplant	4	7	7	11	0	0	1	1	1	2	13	21	6
Am J Kidney Dis	8	19	9	26	0	0	1	3	1	4	19	52	5
Anesthesiol	0	4	0	0	0	0	0	0	0	0	0	4	5
J Clin Epidemiol	0	0	0	0	0	1	0	0	0	0	0	1	5
Clin J Am Soc Nephrol	2	4	11	23	3	4	1	2	1	1	18	34	5
J Med Internet Res	0	1	1	1	0	0	0	0	0	1	1	3	5
Nephrol & Hypertens	1	1	0	0	0	0	0	0	0	0	1	1	4
Transplantation	0	1	11	24	0	1	1	2	0	1	12	29	4
PLoS One	0	1	4	8	1	1	0	0	1	3	6	13	4
Ann Thorac Surg	0	0	0	0	1	1	0	0	0	0	1	1	4
Nephrol Dial Transplant	6	10	4	10	0	0	1	1	2	3	13	24	3
Transpl Int	0	0	0	2	0	0	0	0	0	0	0	2	3
Various	20	37	39	95	4	8	2	5	11	26	76	171	<3

Participation in the Training of Clinician Investigators (Post-Fellowship Research Training)

Robert Yang, MD, FRCPC, FACP, MSc

2008, Assistant Professor, Division of Nephrology, McMaster University
2004 –2008, MSc in Health Research Methodology, McMaster University
2003 – 2005, Nephrology Fellowship, Western University



Scholarships, Grants, Awards and Podium Presentations

1. Investigator: Canadian Living Kidney Donor Safety Study. Canadian Institutes of Health Research, Operating Grant: Population and Public Health, 2008-2009, \$50,000; 2009-2014, \$877,796
2. Podium Presentation: Life Insurance for Kidney Donors: A Canadian Undercover Investigation, American Society of Nephrology Renal Week, 2008
3. Podium Presentation: Life Insurance for Living Kidney Donors: A Canadian Undercover Study, Canadian Society of Nephrology Annual Meeting, 2008
4. Investigator: The Long-term Medical and Psychosocial Implications of Becoming a Living Kidney Donor, Canadian Institutes of Health Research, Health Services Research, Bridge Funding, 2007-2008, \$100,000
5. Research Fellowship: Medical insurability of living kidney donors, Western University, Department of Medicine Resident, 2007-2008, \$30,000
6. Biomedical Fellowship: Medical insurability in living kidney donors, Kidney Foundation of Canada, 2006-2008, \$100,000
7. Second Prize: Nephrology Forum: Insurability of live kidney donors, Lake Louise, 2007
8. Best Abstract: Medical insurability of live kidney donors: London Pre Canadian Society of Nephrology evening, 2007
9. Podium Presentation: Medical insurability in living kidney donors, Consensus Conference in Enhancing Live Organ Donation, Vancouver, 2006
10. Investigator: The Long-term Medical and Psychosocial Implications of Becoming a Living Kidney Donor: A Prospective Pilot Study, Canadian Institutes of Health Research, Health Services Research, 2003-2006, \$224,211

Publications

1. **Yang RC**, Young A, Nevis IF, Lee D, Jain AK, Dominic A, Garg AX. Life insurance for living kidney donors: A Canadian undercover study. *Am J Transplant*. 2009;9(7):1585-90
2. Young A, Karpinski M, Treleaven D, Waterman A, Parikh CR, Thiessen-Philbrook H, **Yang RC**, Garg AX. Differences in tolerance for health risk to the living donor among potential donors, recipients, and transplant professionals. *Kidney Int*. 2008 May;73(10):1159-66 [Editorial *Kidney Int* 2008;73(10):1108-10]
3. **Yang R**, Thiessen-Philbrook H, Klarenbach S, Vlaicu S, Garg AX; Insurability of living organ donors: A Systematic Review. *Am J Transplant* 2007;7(6):1542–1551
4. Clemens KK, Thiessen-Philbrook H, Parikh CR, **Yang R**, Karley ML, Boudville N, Ramesh Prasad GV, Garg AX; Psychosocial health of living kidney donors: a systematic review. *Am J Transplant*. 2006 Dec;6(12):2965-77
5. Vlaicu S, Klarenbach S, **Yang RC**, Dempster T, Garg AX. Current Canadian initiatives to reimburse live organ donors for their non-medical expenses. *Can J Public Health*. 2007 Nov-Dec;98(6):481-3
6. Garg AX, Iansavichus AV, Kastner M, Walters LA, Wilczynski N, McKibbin KA, **Yang R**, Rehman F, Haynes RB. Lost in publication: Half of all renal practice evidence is published in non-renal journals. *Kidney Int*. 2006 Dec;70(11):1995-2005
7. Garg AX, Muirhead N, Knoll G, **Yang R**, Prasad GVR, Thiessen-Philbrook H, Rosas-Arellano MP, Housawi A, Boudville N. Proteinuria and reduced kidney function in living kidney donors: A systematic review, meta-analysis and meta-regression. *Kidney Int*. 2006 Nov;70(10):1801-10
8. Boudville N, Prasad GVR, Knoll G, Muirhead N, Thiessen-Philbrook H, **Yang R**, Rosas-Arellano MP, Housawi A, Garg AX. Meta-analysis: Risk for hypertension in living kidney donors; *Ann Intern Med* 2006 Aug 1;145(3):185-96. [Editorial: *Ann Intern Med* 2006;145(3):224-5; *ACP J Club* 2006;145(3):79]

9. Clarke KS, Klarenbach S, Vlaicu S, **Yang RC**, Garg AX; Donor Nephrectomy Outcomes Research (DONOR) Network. The direct and indirect economic costs incurred by living kidney donors. A systematic review. Nephrol Dial Transplant. 2006 Jul;21(7):1952-60. [Editorial: Nephrol Dial Transplant 2006;21(7):1764-5]
10. Karpinski M, Knoll G, Cohn A, **Yang R**, Garg A, Storsley L. The impact of accepting living kidney donors with mild hypertension or proteinuria on transplantation rates. Am J Kidney Dis. 2006 Feb;47(2):317-23 [Editorial Am J Kidney Dis 2006;47(2):353-5]

Arsh Jain, MD, FRCPC, FACP, MSc

2014, Adjunct Scientist, ICES

Jul 2010, Assistant Professor, Division of Nephrology, Western University

Jul 2006 – Jul 2010, MSc Epidemiology & Biostatistics, Western University

2005 – 2007, Nephrology Fellowship, Western University

Scholarships, Grants, Awards and Podium Presentations

1. Investigator: Impact of eGFR Reporting on Antibiotic Errors in Chronic Kidney Disease Patients, Kidney Foundation of Canada, 2011-2012, \$50,000
2. Investigator: Global trends in peritoneal dialysis utilization, Lawson Health Research Institute, Lawson Internal Research Fund, 2008-2010, \$8,200
3. Podium Presentation: Impact of eGFR reporting on kidney protective medications in Ontario, American Society of Nephrology, San Diego, 2009
4. Podium Presentation: Global trends in peritoneal dialysis: A developing story, American Society of Nephrology, San Diego, 2009
5. Investigator: Impact of Lab Prompts on Chronic Disease Management: The Case of Kidney Disease, Academic Health Science Centre Innovation Fund, 2009, \$100,521
6. Research Fellowship: Canadian Institutes of Health Research 2009, Post-doctoral, \$55,000
7. Investigator: Impact of eGFR reporting on healthcare utilization, Canadian Institutes of Health Research, Healthy Living and Chronic Disease Prevention, 2008-2009, \$100,000
8. Research Fellowship: Effects of eGFR Reporting, Western University, Department of Medicine Clinical Investigator Program, 2007-2009, \$150,000

Publications

1. Siddiqui NF, Coca SG, Devereaux PJ, **Jain AK**, Li L, Luo J, Parikh CR, Paterson M, Thiessen-Philbrook H, Wald R, Walsh M, Whitlock R, Garg AX. Secular trends in acute dialysis following major elective surgery, 1995 to 2009. CMAJ 2012 Aug 7;184(11):1237-45
2. **Jain AK**, Cuerden MS, McLeod I, Hemmelgarn B, Akbari A, Tonelli M, Quinn RR, Oliver MJ, Garg AX. Reporting of the estimated glomerular filtration rate was associated with increased use of angiotensin-converting enzyme inhibitors and angiotensin-II receptor blockers in CKD. Kidney Int. 2012 Jun;81(12):1248-53
3. **Jain AK**, Blake P, Cordy P, Garg AX. Global trends in rates of peritoneal dialysis. J Am Soc Nephrol. 2012 Mar;23(3):533-44
4. Kagoma Y, Garg AX, Li L, **Jain A**. Reporting of the estimated glomerular filtration rate decreased creatinine clearance testing. Kidney Int. 2012 Jun;81(12):1245-7
5. Tawadrous D, Shariff SZ, Haynes RB, Iansavichus AV, **Jain AK**, Garg AX. Use of clinical decision support systems for kidney-related drug prescribing: a systematic review. Am J Kidney Dis. 2011 Dec;58(6):903-14
6. Clark WF, Macnab JJ, Sontrop JM, **Jain AK**, Moist L, Salvadori M, Suri R, Garg AX. Dipstick proteinuria as a screening strategy to identify rapid renal decline. J Am Soc Nephrol 2011 Sep;22(9):1729-36
7. Molnar AO, Coca SG, Devereaux PJ, **Jain AK**, Kitchlu A, Luo J, Parikh CR, Paterson JM, Siddiqui N, Wald R, Walsh M, Garg AX. Statin use associates with a lower incidence of acute kidney injury after major elective surgery. J Am Soc Nephrol. 2011 May;22(5):939-46
8. **Jain AK**, Hemmelgarn BR. Impact of estimated glomerular filtration rate reporting on nephrology referrals: a review of the literature. Nephrology and Hypertension. 2011 May;20(3):218-23



9. Weir MA, **Jain AK**, Gomes T, Juurlink DN, Mamdani M, Li L, Garg AX. Sevelamer prescriptions after reporting of the Dialysis Clinical Outcomes Revisited (DCOR) trial findings: An analysis of 5,495 patients receiving maintenance dialysis in Ontario, Canada. *Am J Kidney Dis.* 2011 Feb;57(2):357-9
10. Lam N, Weir MA, Juurlink DN, Gunraj N, Gomes T, Mamdani M, Hackam DG, **Jain AK**, Garg AX. Hospital admissions for hyperkalemia with trimethoprim-sulfamethoxazole: A cohort study using health care database codes for 393,039 older women with urinary tract infections. *Am J Kidney Dis.* 2011 Mar;57(3):521-3
11. Weir MA, Gomes T, Mamdani M, Juurlink DN, Hackam DG, Mahon JL, **Jain AK**, Garg AX. Impaired renal function modifies the risk of severe hypoglycaemia among users of insulin but not glyburide: a population-based nested case-control study. *Nephrol Dial Transplant.* 2011 Jun;26(6):1888-94
12. Weir MA, Juurlink DN, Gomes T, Mamdani M, Hackam DG, **Jain AK**, Garg AX. Beta-blockers, trimethoprim-sulfamethoxazole, and the risk of hyperkalemia requiring hospitalization in the elderly: A nested case-control study. *Clin J Am Soc Nephrol.* 2010 Sep;5(9):1544-51
13. Kagoma Y, Weir M, Iansavichus A, Hemmelgarn BR, Akbari A, Patel U, Garg AX, **Jain AK**. Impact of eGFR reporting on patients, clinicians, and health-care systems: A systematic review. *Am J Kidney Dis.* 2011 Apr;57(4):592-601
14. Lam N, **Jain AK**, Hackam DG, Cuerden MS, Suri RS, Huo C, Li P, Clark WF, Garg AX. Impact of a randomized controlled trial on statin use in dialysis patients. *Kidney Int.* 2009 Dec;76(11):1172-9
15. **Jain AK**, McLeod I, Huo C, Cuerden MS, Akbari A, Tonelli M, van Walraven C, Quinn RR, Hemmelgarn B, Oliver M, Li P, Garg AX. When laboratories report estimated glomerular filtration rates in addition to serum creatinines, nephrology consults increase. *Kidney Int.* Aug;76(3):318-23
16. Yang R, Lee D, Young A, Nevis I, **Jain AK**, Dominic A, Garg AX. Life insurance for living kidney donors: A Canadian undercover study. *Am J Transplant.* 2009 Jul;9(7):1585-90
17. Shariff S, Cuerden MS, **Jain AK**, Garg AX. The secret of immortal time bias in epidemiologic studies. *J Am Soc Nephrol.* 2008 May;19(5):841-3

Matthew Weir, MD, FRCPC, FACP, MSc

2014, Adjunct Scientist, ICES

Jul 2011, Assistant Professor, Division of Nephrology, Western University

Sept 2007 – May 2013, MSc Epidemiology & Biostatistics, Western University

2006 – 2008, Nephrology Fellowship, Western University

Scholarships, Grants, Awards and Podium Presentations

1. Investigator: Ontario Drug Policy and Research Network, Ministry of Health and Long-Term Care, 2011-2014, \$2,814,586
2. Investigator: Acute kidney injury from antiviral drugs for herpes infections. Canadian Institutes of Health Research, Health Services Research, 2011-2013, \$99,209
3. Investigator: Severe Electrolyte Disorders from Common Medications: Risk and Mitigation. Canadian Institutes of Health Research, Health Services Research, 2011-2013, \$139,828
4. Investigator: Beta blockers, dialyzability and outcomes, Canadian Institutes of Health Research, Operating grant, Health Services Research, 2011-2012, \$59,956
5. Investigator: Drug Safety in Impaired Renal Function, Drug Innovation Fund, Ontario Ministry of Health and Long-Term Care, 2010-2012, \$148,695
6. Investigator: Effect of curcumin on albuminuria in patients with diabetic nephropathy: a pilot randomized placebo-controlled trial, Western University, Department of Pathology, 2010-2012, \$30,000
7. Research Fellowship: Clinical Investigator Program, Western University, 2008-2011, \$210,000

Publications

1. **Weir MA**, Dixon SN, Fleet JL, Roberts MA, Hackam DG, Oliver MJ, Suri RS, Quinn, RR, Ozair S, Beyea MM, Kitchlu A, Garg AX. β -Blocker Dialyzability and Mortality in Older Patients Receiving Hemodialysis. *J Am Soc Nephrol.* 2014 October 30.
2. Shariff SZ, Bejaimal SA, Sontrop JM, Iansavichus AV, Haynes RB, **Weir MA**, Garg AX. Retrieving Clinical Evidence: A Comparison of PubMed and Google Scholar for Quick Clinical Searches. *J Med Internet Res.* 2013 Aug 15;15(8):e164



3. Lam NN, **Weir MA**, Yao Z, Blake PG, Beyea MM, Gomes T, Gandhi S, Mamdani M, Wald R, Parikh CR, Hackam DG, Garg AX. Risk of acute kidney injury from oral acyclovir: a population-based study. *Am J Kidney Dis*. 2013 May;61(5):723-9
4. Gandhi S, Shariff SZ, Beyea MM, **Weir MA**, Hands T, Kearns G, Garg AX. Identifying geographical regions serviced by hospitals to assess laboratory-based outcomes. *BMJ Open*. 2013 Jan 3;3(1)
5. Fleet JL, Shariff SZ, Gandhi S, **Weir MA**, Jain AK, Garg AX. Validity of the International Classification of Diseases 10th revision code for hyperkalaemia in elderly patients at presentation to an emergency department and at hospital admission. *BMJ Open*. 2012 December
6. Gandhi S, Shariff SZ, Fleet JL, **Weir MA**, Jain AK, Garg AX. Validity of the International Classification of Diseases 10th revision code for hospitalisation with hyponatraemia in elderly patients. *BMJ Open*. 2012 December
7. Shariff SZ, Sontrop JM, Iansavichus AV, Haynes RB, **Weir MA**, Gandhi S, Cuerden MS, Garg AX. Availability of renal literature in six bibliographic databases. *Clin Kidney J*. 2012 Dec;5(6):610-617
8. **Weir MA**, Gomes T, Winquist E, Juurlink DN, Cuerden MS, Mamdani M. Effects of funding policy changes and health warnings on the use of erythropoiesis-stimulating agents. *J Oncol Pract*. 2012 May;8(3):179-83
9. Shih AW, **Weir MA**, Clemens KK, Yao Z, Gomes T, Mamdani MM, Juurlink DN, Hird A, Hodsman A, Parikh CR, Wald R, Cadarette SM, Garg AX. Oral bisphosphonate use in the elderly is not associated with acute kidney injury. *Kidney Int*. 2012 Oct;82(8):903-8
10. Zhao YY, **Weir MA**, Manno M, Cordy P, Gomes T, Hackam DG, Juurlink DN, Mamdani M, Moist L, Parikh CR, Paterson JM, Wald R, Yao Z, Garg AX. New fibrate use and acute renal outcomes in elderly adults: a population-based study. *Ann Intern Med*. 2012 Apr 17;156(8):560-9
11. Shariff S, Haynes B, Sontrop JM, Iansavichus AV, McKibbin A, Wilczynski NL, **Weir MA**, Speechley MR, Thind A, Garg AX. Impact of PubMed search filters on evidence retrieval by clinicians. *CMAJ* 2012 Feb 21;184(3):E184-90
12. **Weir MA**, Beyea MM, Gomes T, Juurlink DN, Muhammad M, Blake PG, Wald R, Garg AX. Orlistat and acute kidney injury: An analysis of 953 patients. *Arch Intern Med*. 2011 Apr 11;171(7):703-4
13. Shariff SZ, Bejaimal SA, Sontrop JM, Iansavichus AV, **Weir MA**, Haynes RB, Speechley MR, Thind A, Garg AX. Searching for medical information online: a survey of Canadian nephrologists. *J Nephrol*. 2011 Nov-Dec;24(6):723-32
14. **Weir MA**, Jain AK, Gomes T, Juurlink DN, Mamdani M, Li L, Garg AX. Sevelamer prescriptions after reporting of the Dialysis Clinical Outcomes Revisited (DCOR) trial findings: An Analysis of 5,495 patients receiving maintenance dialysis in Ontario, Canada. *Am J Kidney Dis*. 2011 Feb;57(2):357-9
15. Lam N, **Weir MA**, Juurlink DN, Gunraj N, Gomes T, Mamdani M, Hackam DG, Jain AK, Garg AX. Hospital Admissions for hyperkalemia with trimethoprim-sulfamethoxazole: A cohort study using health care database codes for 393,039 older women with urinary tract infections. *Am J Kidney Dis*. 2011 Mar;57(3):521-3
16. **Weir MA**, Gomes T, Mamdani M, Juurlink DN, Hackam DG, Mahon JL, Jain AK, Garg AX. Impaired renal function modifies the risk of severe hypoglycaemia among users of insulin but not glyburide: a population-based nested case-control study. *Nephrol Dial Transplant*. 2011 Jun;26(6):1888-94
17. **Weir MA**, Juurlink DN, Gomes T, Mamdani M, Hackam DG, Jain AK, Garg AX. Beta-blockers, trimethoprim-sulfamethoxazole, and the risk of hyperkalemia requiring hospitalization in the elderly: a nested case-control study. *Clin J Am Soc Nephrol*. 2010 Sep;5(9):1544-51
18. Kagoma YK, **Weir MA**, Iansavichus AV, Hemmelgarn BR, Akbari A, Patel UD, Garg AX, Jain AK. Impact of Estimated GFR Reporting on Patients, Clinicians, and Health-Care Systems: A Systematic Review. *Am J Kidney Dis*. 2011 Apr;57(4):592-601
19. Iansavichus AV, Haynes RB, Shariff SZ, **Weir M**, Wilczynski NL, McKibbin A, Rehman F, Garg AX. Optimal search filters for renal information in EMBASE. *Am J Kidney Dis*. 2010 Jul;56(1):14-22
20. Garg AX, Iansavichus AV, Wilczynski NL, Kastner M, Baier LA, Shariff SZ, Rehman F, **Weir M**, McKibbin KA, Haynes RB. Filtering Medline for a clinical discipline: diagnostic test assessment framework. *BMJ*. 2009 Sep 18;339:b3435
21. Clark WF, Kortas C, Suri RS, Moist LM, Salvadori M, **Weir MA**, Garg AX. Excessive fluid intake as a novel cause of proteinuria. *CMAJ*. 2008 Jan 15;178(2):173-5

Ngan Lam, MD, FRCPC, FACP, MSc

July 2015 Assistant Professor, University of Alberta
2013 – 2014, Kidney Transplantation Fellowship, Western University
Sept 2011 – 2015, MSc Epidemiology & Biostatistics, Western University
2010 – 2012, Nephrology Fellowship, Western University
2008, PGY2 2-month Internal Medicine Research Rotation



Scholarships, Grants, Awards and Podium Presentations

1. Research Fellowship: KRESCENT Post-Doctoral Fellowship, 2012-2015, \$195,000
2. Research Fellowship: Clinical Investigator Program, Western University, 2012-2015, \$30,000
3. Investigator: Long-term risks of kidney stones requiring intervention and bleeding requiring hospitalization in living kidney donors. The Kidney Foundation of Canada, 2013-2014, \$49,112
4. Investigator: Acute kidney injury from antiviral drugs for herpes infections. Canadian Institutes of Health Research, Health Services Research, 2010-2012, \$99,209
5. Investigator: Severe Electrolyte Disorders from Common Medications: Risk and Mitigation. Canadian Institutes of Health Research, Health Services Research, 2010-2012, \$139,828
6. Podium Presentation: Acute Dialysis Risk in Living Kidney Donors, American Transplant Congress, June 2012
7. Podium Presentation: Drug-Induced Acute Kidney Injury, Canadian Society of Nephrology, April 2012
8. Podium Presentation: Acute Dialysis Risk in Living Kidney Donors, Sixth Annual Young Investigators' Forum, February 2012
9. Award: Gout in Living Kidney Donors, Best Oral Presentation, Western University, Department of Medicine, Resident Research Day, May 2014
10. Award: Hospital Admissions for Hyperkalemia with Trimethoprim-Sulfamethoxazole, Second Place Oral Presentation, Fifth Annual Young Investigators' Forum, February 2011
11. Award: Hospital Admissions for Hyperkalemia with Trimethoprim-Sulfamethoxazole, Top Three Oral Presentation, Canadian Society of Internal Medicine, October 2010
12. Award: Hospital Admissions for Hyperkalemia with Trimethoprim-Sulfamethoxazole, Best Oral Presentation, Western University, Department of Medicine, Resident Research Day, May 2010
13. Award: Impact of a Randomized Controlled Trial on Statin Use in Dialysis Patients, Best Oral Presentation, Fourth Annual Young Investigators' Forum, February 2010
14. Award: Impact of a Randomized Controlled Trial on Statin Use in Dialysis Patients, Canadian Society for Clinical Investigation / Canadian Institutes of Health Resident Research Award, June 2009 (top resident research project for Western University, all disciplines)
15. Award: Impact of a Randomized Controlled Trial on Statin Use in Dialysis Patients, Canadian Society of Nephrology, Trainee Abstract Award, May 2009

Publications

1. **Lam NN**, Lentine KL, Levey AS, Kasiske BL, Garg AX. Long-term medical risks to the living kidney donor. *Nat Rev Nephrol*. 2015 May 5. 10.1038/nrneph.2015.58.
2. **Lam NN**, Garg AX, Segev DL, Schnitzler MA, Xiao H, Axelrod D, Brennan DC, Kasiske BL, Tuttle-Newhall JE, Lentine KL. Gout after Living Kidney Donation: Correlations with Demographic Traits and Renal Complications. *Am J Nephrol*. 2015 Apr 17;41(3):231-240.
3. **Lam NN**, McArthur E, Kim SJ, Prasad GV, Lentine KL, Reese PP, Kasiske BL, Lok CE, Feldman LS, Garg AX; Donor Nephrectomy Outcomes Research (DONOR) Network. Gout After Living Kidney Donation: A Matched Cohort Study. *Am J Kidney Dis*. 2015 Mar 25.
4. Sood MM, Garg AX, Bota SE, Marisiddappa L, McArthur E, Naylor KL, Kapral MK, Kim SJ, **Lam NN**, Molnar AO, Harel Z, Perl J, Knoll GA. Risk of major hemorrhage after kidney transplantation. *Am J Nephrol*. 2015;41(1):73-80
5. Garg AX, Nevis IF, McArthur E, Sontrop JM, Koval JJ, **Lam NN**, Hildebrand AM, Reese PP, Storsley L, Gill JS, Segev DL, Habbous S, Bugeja A, Knoll GA, Dipchand C, Monroy-Cuadros M, Lentine KL, the DONOR Network. Gestational Hypertension and Preeclampsia in Living Kidney Donors. *N Engl J Med*. 2015 Apr 9;372(15):1469-70.

6. **Lam NN**, Lentine KL, Garg AX. End-stage renal disease risk in live kidney donors: what have we learned from two recent studies? *Curr Opin Nephrol Hypertens*. 2014 Nov;23(6):592-6
7. **Lam NN**, Fleet JL, McArthur E, Blake PG, Garg AX. Higher dose versus lower dose of antiviral therapy in the treatment of herpes zoster infection in the elderly: a matched retrospective population-based cohort study. *BMC Pharmacol Toxicol*. 2014 Sep 4;15:48
8. Li AH, Dixon S, Prakash V, Kim SJ, Knoll GA, **Lam NN**, Garg AX. Physician registration for deceased organ donation. *JAMA*. 2014 Jul 16;312(3)
9. Thomas SM, **Lam NN**, Huang A, Nash DM, Prasad GVR, Knoll GA, Koval JJ, Lentine KL, Kim SJ, Alam A, Lok CE, Treleaven DJ, Garg AX; The Donor Nephrectomy Outcomes Research (DONOR) Network. Risk of serious gastrointestinal bleeding in living kidney donors. *Clin. Transplant*. 2014 May;28(5):530-9
10. Botto F, et al on behalf of the VISION investigators (**Lam NN an investigator**). Myocardial Injury after Noncardiac Surgery: A Large, International, Prospective Cohort Study Establishing Diagnostic Criteria, Characteristics, Predictors, and 30-day Outcomes. *Anesthesiol*. 2014 Mar 01;120(3):564-78
11. Thomas SM, **Lam NN**, Welk BK, Ngan C, Huang A, Nash DM, Prasad GV, Knoll GA, Koval JJ, Lentine KL, Kim SJ, Lok CE, Garg AX; Donor Nephrectomy Outcomes Research (DONOR) Network. Risk of kidney stones with surgical intervention in living kidney donors. *Am J Transplant*. 2013 Nov;13(11):2935-44
12. Naylor KL, Li AH, **Lam NN**, Hodsman AB, Jamal SA, Garg AX. Fracture risk in kidney transplant recipients: A systematic review. *Transplantation*. 2013 Jun 27;95(12):1461-70
13. **Lam NN**, Weir MA, Yao Z, Blake PG, Beyea M, Gomes T, Gandhi S, Mamdani M, Wald R, Parikh CR, Hackam DG, Garg AX. Risk of acute kidney injury from oral acyclovir: A population-based study. *Am J Kidney Dis*. 2013 May;61(5):723-9
14. **Lam N**, Huang A, Feldman LS, Gill JS, Karpinski M, Kim J, Klarenbach SW, Knoll GA, Lentine KL, Ngan CY, Parikh CR, Prasad GV, Treleaven DJ, Young A, Garg AX for the Donor Nephrectomy Outcomes Research (DONOR) Network. Acute dialysis risk in living kidney donors. *Nephrol Dial Transplant* 2012 Aug;27(8):3291-5
15. Garg AX, Meirambayeva A, Huang A, Kim J, Prasad GV, Knoll G, Boudville N, Lok C, McFarlane P, Karpinski M, Storsley L, Klarenbach S, **Lam N**, Thomas SM, Dipchand C, Reese P, Doshi M, Gibney E, Taub K, Young A for the DONOR Network. Cardiovascular disease risk in living kidney donors. *BMJ* 2012 Mar 1; 344: e1203
16. **Lam N**, Leong-Sit P, Garg AX. The role of implantable cardioverter-defibrillators in long-term dialysis patients (an editorial). *Am J Kidney Dis*. 2011;58(3):338-9
17. **Lam N**, Weir MA, Jurrlink DN, Gunraj N, Gomes T, Mamdani M, Hackam DG, Jain AK, Garg AX. Hospital admissions for hyperkalemia with trimethoprim-sulfamethoxazole: A cohort study using health care database codes for 393,039 older women with urinary tract infections. *Am J Kidney Dis*. 2011;57(3):521-3
18. **Lam NN**, Jain AK, Hackam DG, Cuerden MS, Suri RS, Huo CY, Li P, Clark WF, Garg AX. Results of a randomized controlled trial on statin use in dialysis patients had no influence on statin prescription. *Kidney Int*. 2009;76:1172-9 [authors reply to Letter to the Editor: *Kidney International* 2010;78:112]

Ainslie Hildebrand, MD, FRCPC, FACP, MSc

July 2015, Assistant Professor, University of Alberta
 2014–2015, Clinical Glomerulonephritis and Renal Diseases of Pregnancy Fellowship, U of T
 2012–2015, Clinical Investigator Program, Western University
 Sept 2011–2015, MSc Epidemiology & Biostatistics, Western University
 2010 – 2012, Nephrology Fellowship, Western University

Scholarships, Grants, Awards and Podium Presentations

1. Investigator: Long-term vascular outcomes of idiopathic thrombotic microangiopathy treated with plasma exchange, Kidney Foundation of Canada/Answering T.T.P Foundation, 2014-2016, \$99,720
2. Research Fellowship: Clinical Investigator Program, Western University, 2012-2015, \$160,000
3. Research Fellowship: Ontario Drug Policy Research Network Training Program, Ontario Drug Policy Research Network, 2012-2013, \$40,000
4. Award: Adherence to prescribing recommendations made on a provincial formulary, Young Investigators' Forum, February 2013, Finalist (\$500)



5. Podium Presentation: Adherence to prescription drug recommendations made on a provincial formulary for aliskiren, Young Investigators' Forum, February 2013

Publications

1. Garg AX, Chan MTV, Cuerden MS, Devereaux PJ, Abbasi SH, **Hildebrand A**, Lamontagne F, Lamy A, Noiseux N, Parikh CR, Perkovic V, Quantz M, Rochon A, Royse A, Sessler DI, Shah PJ, Sontrop JM, Tagarakis GI, Teoh KH, Vincent J, Walsh M, Yared JP, Yusuf S, Whitlock RP; SIRS Investigators. Effect of methylprednisolone on acute kidney injury in patients undergoing cardiac surgery with a cardiopulmonary bypass pump: a randomized controlled trial. *CMAJ*. 2019;191(9):E247-E256.
2. Liu AR, **Hildebrand AM**, Dixon S, Sontrop JM, Clark WF, Lazo-Langner A, Nash D, Garg AX. A matched case-control study to assess the association between non-steroidal anti-inflammatory drug use and thrombotic microangiopathy. *PLoS One*. 2018;13(8):e0202801. Published 2018 Aug 24.
3. **Hildebrand AM**, Hladunewich MA, Garg AX. Preeclampsia and the Long-term Risk of Kidney Failure. *Am J Kidney Dis*. 2017;69(4):487-488.
4. Roshanov PS, Walsh M, Devereaux PJ, MacNeil SD, Lam NN, **Hildebrand AM**, Acedillo RR, Mrkobrada M, Chow CK, Lee VW, Thabane L, Garg AX. External validation of the Revised Cardiac Risk Index and update of its renal variable to predict 30-day risk of major cardiac complications after non-cardiac surgery: rationale and plan for analyses of the VISION study. *BMJ Open*. 2017;7(1):e013510. Published 2017 Jan 9.
5. Thejeel B, Garg AX, Clark WF, Liu AR, Iansavichus AV, **Hildebrand AM**. Long-term outcomes of thrombotic microangiopathy treated with plasma exchange: A systematic review. *Am J Hematol*. 2016;91(6):623-630.
6. **Hildebrand AM**, Liu K, Shariff SZ, Ray JG, Sontrop JM, Clark WF, Hladunewich MA, Garg AX. Characteristics and Outcomes of AKI Treated with Dialysis during Pregnancy and the Postpartum Period. *J Am Soc Nephrol*. 2015 May 14.
7. Garg AX, Nevis IF, McArthur E, Sontrop JM, Koval JJ, Lam NN, **Hildebrand AM**, Reese PP, Storsley L, Gill JS, Segev DL, Habbous S, Bugeja A, Knoll GA, Dipchand C, Monroy-Cuadros M, Lentine KL, the DONOR Network. Gestational Hypertension and Preeclampsia in Living Kidney Donors. *N Engl J Med*. 2015 Apr 9;372(15):1469-70
8. Iansavichus AV, **Hildebrand AM**, Haynes RB, Wilczynski NL, Levin A, Hemmelgarn BR, Tu K, Nesrallah GE, Nash DM, Garg AX. High-performance information search filters for chronic kidney disease content in PubMed, Ovid Medline and Embase. *Am J Kidney Dis* 2014 Jul 21
9. **Hildebrand AM**, Yao Z, Gomes T, Camacho X, Garg AX, Juurlink DN, Mamdani MM, Dhalla IA. Adherence to prescribing recommendations made on a provincial formulary. *Healthcare Policy* 2014 May;9(4):20-30.
10. Garg AX, Vincent J, Cuerden M, Parikh C, Devereaux PJ, Teoh K, Yusuf S, **Hildebrand A**, Lamy A, Zuo Y, Sessler DI, Shah P, Abbasi SH, Quantz M, Yared JP, Noiseux N, Tagarakis G, Rochon A, Pogue J, Walsh M, Chan MT, Lamontagne F, Salehiomran A, Whitlock R; SIRS Investigators. Steroids In caRdiac Surgery (SIRS) trial: acute kidney injury substudy protocol of an international randomised controlled trial. *BMJ Open* 2014 Mar 5;4(3):e004842
11. Botto F, et al on behalf of the VISION investigators (**Hildebrand A** an investigator). Myocardial Injury after Noncardiac Surgery: A Large, International, Prospective Cohort Study Establishing Diagnostic Criteria, Characteristics, Predictors, and 30-day Outcomes. *Anesthesiol*. 2014 Mar 01;120(3):564-78
12. **Hildebrand AM**, Iansavichus AV, Haynes RB, Wilczynski NL, Mehta RL, Parikh CR, Garg AX. High Performance Information Search Filters for Acute Kidney Injury Content in PubMed, Ovid Medline, and Embase. *Nephrol Dial Transplant* 2014 Apr;29(4):823-32
13. **Hildebrand AM**, Garg AX. Blood pressure targets in chronic kidney disease: does proteinuria dictate how low we go? *CMAJ* 2013 Aug 6;185(11):941-2
14. **Hildebrand AM**, Iansavichus AV, Lee CW, Haynes RB, Wilczynski NL, McKibbin A, Hladunewich MA, Clark WF, Catran DC, Garg AX. Glomerular disease search filters for Pubmed, Ovid Medline, and Embase: a development and validation study. *Med Inform Decis Mak* 2012; 12(1):49

Kristin Clemens, MD, FRCPC, FACP (Endo), MSc

May 2016, Adjunct Scientist, ICES
July 2015, Assistant Professor, Division of Endocrinology, Western University
Sept 2013 – 2015, MSc Epidemiology, Western University
July 2011, PGY4 Endocrinology Fellowship, Western University
2010, 2nd year Internal Medicine resident research elective, Western University
2006, 2nd year Medical Student, Summer Research Training Program
2005, 1st year Medical Student, Summer Research Training Program
2004, 4th year undergraduate, Research Assistant, Living Kidney Donor Studies



Scholarships, Grants, Awards and Podium Presentations

1. Award: First Poster Prize, Diabetes Research Day 2014, Western University (\$350)
2. Podium Presentation: New updates in type 2 diabetes: a focus on the kidneys, Canadian Endocrine Review Course, 2015
3. Co-Principal Investigator: Western Ambient Temperature and Health Research Program at ICES, Academic Medical Organization of Southwestern Ontario, Innovation Fund, 2015-2017, \$169,095
4. Award: PSI Foundation Resident Research Prize 2014, Western University (\$2000)
5. Fellowship: Clinician Investigator Program Fellowship, Western University (\$150,000)

Publications

1. Hodge MC, Dixon S, Garg AX, **Clemens KK**. Validation of an International Statistical Classification of Diseases and Related Health Problems 10th Revision Coding Algorithm for Hospital Encounters with Hypoglycemia. *Can J Diabetes*. 2017;41(3):322-328.
2. **Clemens KK**, Shariff S, Richard L, Booth G, Gilliland J, Garg AX. Seasonal variation in hospital encounters with hypoglycaemia and hyperglycaemia. *Diabet Med*. 2017;34(7):958-965.
3. Hodge M, McArthur E, Garg AX, Tangri N, **Clemens KK**. Hypoglycemia Incidence in Older Adults by Estimated GFR. *Am J Kidney Dis*. 2017;70(1):59-68.
4. **Clemens KK**, Liu K, Shariff S, Scherthaner G, Tangri N, Garg AX. Secular trends in antihyperglycaemic medication prescriptions in older adults with diabetes and chronic kidney disease: 2004-2013. *Diabetes Obes Metab*. 2016;18(6):607-614.
5. **Clemens KK**, McArthur E, Dixon SN, Fleet JL, Hramiak I, Garg AX. The Hypoglycemic Risk of Glyburide (Glibenclamide) Compared with Modified-Release Gliclazide. *Can J Diabetes*. 2015 Mar 31
6. **Clemens KK**, McArthur E, Fleet JL, Hramiak I, Garg AX. The risk of pancreatitis with sitagliptin therapy in older adults: a population-based cohort study. *CMAJ Open*. 2015. 3(2):172-181.
7. Shih AW, Weir MA, **Clemens KK**, Yao Z, Gomes T, Mamdani MM, Juurlink DN, Hird A, Hodsman A, Parikh CR, Wald R, Cadarette SM, Garg AX. Oral bisphosphonate use in the elderly is not associated with acute kidney injury. *Kidney Int*. 2012 Oct;82(8):903-8
8. **Clemens K**, Van Uum S.A pituitary mass as consequence of a decimal error in levothyroxine dose. *CMAJ* 2012; 184: 210.
9. Kitchlu A, **Clemens K**, Gomes T, Hackam DG, Juurlink DN, Mamdani M, Manno M, Oliver MJ, Quinn RR, Suri RS, Wald R, Yan AT, Garg AX. Beta-blockers and Cardiovascular Outcomes in Dialysis Patients: A Cohort Study in Ontario, Canada. *Nephrol Dial Transplant*. 2012 Apr;27(4):1591-8
10. **Clemens K**, Payne W, Van Uum SH. Central hypothyroidism. *Canadian Family Physician* 2011; 57: 677-680.
11. **Clemens K**, Boudville N, Dew MA, Geddes C, Gill JS, Jassal V, Klarenbach S, Knoll G, Muirhead N, Prasad GV, Storsley L, Treleaven D, Garg A; Donor Nephrectomy Outcomes Research (DONOR) Network. The long-term quality of life of living kidney donors: a multicenter cohort study. *Am J Transplant*. 2011 Mar;11(3):463-9
12. Moody EM, **Clemens KK**, Storsley L, Waterman A, Parikh CR, Garg AX. Improving on-line information for potential living kidney donors. *Kidney Int*. 2007 May;71(10):1062-70
13. **Clemens KK**, Thiessen-Philbrook H, Parikh CR, Yang RC, Karley ML, Boudville N, Ramesh Prasad GV, Garg AX; Psychosocial health of living kidney donors: a systematic review. *Am J Transplant*. 2006 Dec;6(12):2965-77

Rey Acedillo, MSc, MD, FRCPC, FACP, MSc

2019 – Staff Nephrologist at Thunder Bay Regional Health Sciences Centre
Sept 2013 – 2019, MSc Epidemiology & Biostatistics, Western University
2012 – 2014, Nephrology Fellowship, Western University
2011, PGY-2 Internal Medicine Research Elective, Western University



Scholarships, Grants, Awards and Podium Presentations

1. Research Fellowship: Clinical Investigator Program Salary Award, Western University, 2014-2016, \$150,000

Publications

1. Varghese A, Lacson E Jr, Sontrop JM, **Acedillo RR**, Al-Jaishi AA, Anderson S, Bagga A, Bain KL, Bennett LL, Bohm C, Brown PA, Chan CT, Cote B, Dev V, Field B, Harris C, Kalatharan S, Kiaii M, Molnar AO, Oliver MJ, Parmar MS, Schorr M, Shah N, Silver SA, Smith DM, Sood MM, St Louis I, Tennankore KK, Thompson S, Tonelli M, Vorster H, Waldvogel B, Zacharias J, Garg AX; Dialysate Magnesium (Dial-Mag) Investigators. A Higher Concentration of Dialysate Magnesium to Reduce the Frequency of Muscle Cramps: A Narrative Review. Can J Kidney Health Dis. 2020 Oct 22;7:2054358120964078. doi: 10.1177/2054358120964078. eCollection 2020.
2. Garg AX, Kurz A, Sessler DI, Cuerden M, Robinson A, Mrkobrada M, Parikh CR, Mizera R, Jones PM, Tiboni M, Font A, Cegarra V, Gomez MFR, Meyhoff CS, Vanhelder T, Chan MTV, Torres D, Parlow J, Clanchet MDN, Amir M, Bidgoli SJ, Pasin L, Martinsen K, Malaga G, Myles P, **Acedillo R**, Roshanov PS, Walsh M, Dresser G, Kumar P, Fleischmann E, Villar JC, Painter T, Biccari B, Bergese S, Srinathan S, Cata JP, Chan V, Mehra B, Wijeyesundera DN, Leslie K, Forget P, Whitlock R, Yusuf S, Devereaux PJ, for the POISE-2. Effect of Perioperative Aspirin and Clonidine on Acute Kidney Injury A Randomized Clinical Trial. JAMA. 2014 Dec 3;312(21):2254-64.
3. **Acedillo RR**, Tangri N, Garg AX. The kidney failure risk equation: on the road to being clinically useful? Nephrol Dial Transplant. 2013 Jul;28(7):1623-4
4. Garg AX, Kurz A, ..., **Acedillo R**, Roshanov P, ..., Devereaux PJ; POISE-2 Investigators. Aspirin and clonidine in non-cardiac surgery: acute kidney injury substudy protocol of the Perioperative Ischaemic Evaluation (POISE) 2 randomised controlled trial. BMJ Open 2014; 4:e004886.
5. Botto F, et al on behalf of the VISION investigators (**Acedillo R** an investigator). Myocardial Injury after Noncardiac Surgery: A Large, International, Prospective Cohort Study Establishing Diagnostic Criteria, Characteristics, Predictors, and 30-day Outcomes. Anesthesiol. 2014 Mar 01;120(3):564-78
6. **Acedillo RR**, Shah M, Devereaux PJ, Li L, Iansavichus AV, Walsh M, Garg AX. The risk of perioperative bleeding in patients with chronic kidney disease: a systematic review and meta-analysis. Ann Surg. 2013 Dec;258(6):901-13.
7. Varghese A, Lacson E Jr, Sontrop JM, **Acedillo RR**, Al-Jaishi AA, Anderson S, Bagga A, Bain KL, Bennett LL, Bohm C, Brown PA, Chan CT, Cote B, Dev V, Field B, Harris C, Kalatharan S, Kiaii M, Molnar AO, Oliver MJ, Parmar MS, Schorr M, Shah N, Silver SA, Smith DM, Sood MM, St Louis I, Tennankore KK, Thompson S, Tonelli M, Vorster H, Waldvogel B, Zacharias J, Garg AX; Dialysate Magnesium (Dial-Mag) Investigators. A Higher Concentration of Dialysate Magnesium to Reduce the Frequency of Muscle Cramps: A Narrative Review. Can J Kidney Health Dis. 2020 Oct 22;7:2054358120964078. doi: 10.1177/2054358120964078. eCollection 2020.

Pavel Roshanov, BSc, MSc, MD, FRCPC

2013 – present, PhD Health Research Methodology, McMaster University
2019 – present, Nephrology Fellowship, Western University
2016 – 2019, Internal Medicine Resident, McMaster University
2011 – 2016, Medical Student, Western University



Scholarships, Grants, Awards and Podium Presentations

1. Award: McMaster Faculty of Health Science award of excellence 2015
2. Award: CIHR-IHSPR Rising Star Award, 2013-2014
3. Award: American Society of Nephrology Student Scholar Award, 2013, \$26,000 USD

Publications

1. Wilson TA, de Koning L, Quinn RR, Zarnke KB, McArthur E, Iskander C, **Roshanov PS**, Garg AX, Hemmelgarn BR, Pannu N, James MT. Derivation and External Validation of a Risk Index for Predicting Acute Kidney Injury Requiring Kidney Replacement Therapy After Noncardiac Surgery. *JAMA Netw Open*. 2021 Aug 2;4(8):e2121901.
2. **Roshanov PS**, Sessler DI, Chow CK, Garg AX, Walsh MW, Lam NN, Hildebrand AM, Biccadd BM, Acedillo RR, MacNeil SD, Lee VW, Szczeklik W, Mrkobrada M, Thabane L, Devereaux PJ. Predicting myocardial injury and other cardiac complications after elective noncardiac surgery with the Revised Cardiac Risk Index: the VISION study. *Can J Cardiol*. 2021 Mar 22:S0828-282X(21)00164-1.
3. **Roshanov PS**, Eikelboom JW, Sessler DI, Kearon C, Guyatt GH, Crowther M, Tandon V, Borges FK, Lamy A, Whitlock R, Biccadd BM, Szczeklik W, Panju M, Spence J, Garg AX, McGillion M, VanHelder T, Kavsak PA, de Beer J, Winemaker M, Le Manach Y, Sheth T, Pinthus JH, Siegal D, Thabane L, Simunovic MRI, Mizera R, Ribas S, Devereaux PJ. Bleeding Independently associated with Mortality after noncardiac Surgery (BIMS): an international prospective cohort study establishing diagnostic criteria and prognostic importance. *Br J Anaesth*. 2020 Aug 4:S0007-0912(20)30536-5.
4. **Roshanov PS**, Guyatt GH, Tandon V, Borges FK, Lamy A, Whitlock R, Biccadd BM, Szczeklik W, Panju M, Spence J, Garg AX, McGillion M, Eikelboom JW, Sessler DI, Kearon C, Crowther M, VanHelder T, Kavsak PA, de Beer J, Winemaker M, Le Manach Y, Sheth T, Pinthus JH, Siegal D, Thabane L, Simunovic MRI, Mizera R, Ribas S, Devereaux PJ. Preoperative prediction of Bleeding Independently associated with Mortality after noncardiac Surgery (BIMS): an international prospective cohort study. *Br J Anaesth*. 2020 Jul 24:S0007-0912(20)30538-9.
5. Nash DM, Markle-Reid M, Brimble KS, McArthur E, **Roshanov PS**, Fink JC, Weir MA, Garg AX. Nonsteroidal anti-inflammatory drug use and risk of acute kidney injury and hyperkalemia in older adults: a population-based study. *Nephrol Dial Transplant*. 2019 Jul 1;34(7):1145-1154.
6. Garg AX, Badner N, Bagshaw SM, Cuerden MS, Fergusson DA, Gregory AJ, Hall J, Hare GMT, Khanykin B, McGuinness S, Paikh CR, **Roshanov PS**, Sontrop JM, Syed S, Tagarakis GI, Thorpe KE, Verma S, Wald R, Whitlock RP, Mazer CD. Safety of a Restrictive versus Liberal Approach to Red Blood Cell Transfusion on the Outcome of AKI in Patients Undergoing Cardiac Surgery: A Randomized Clinical Trial. *J Am Soc Nephrol*. 2019;30(7):1294-1304.
7. Tan VS, Garg AX, McArthur E, Patzer RE, Gander J, **Roshanov PS**, Kim SJ, Knoll GA, Yohanna Seychelle, McCallum MK, Naylor KL. Predicting 3-Year Survival in Patients Receiving Maintenance Dialysis: An External Validation of iChoose Kidney in Ontario, Canada. *Can J Kidney Health Dis*. 2018;5:2054358118799693. Published 2018 Oct 4.
8. Garg AX, Shehata N, McGuinness S, Whitlock R, Fergusson D, Wald R, Parikh C, Bagshaw SM, Khanykin B, Gregory A, Syed S, Hare GMT, Cuerden MS, Thorpe KE, Hall J, Verma S, **Roshanov PS**, Sontrop JM, Mazer CD. Risk of Acute Kidney Injury in Patients Randomized to a Restrictive Versus Liberal Approach to Red Blood Cell Transfusion in Cardiac Surgery: A Substudy Protocol of the Transfusion Requirements in Cardiac Surgery III Noninferiority Trial. *Can J Kidney Health Dis*. 2018;5:2054358117749532. Published 2018 Jan 3.
9. **Roshanov PS**, Eikelboom JW, Crowther M, et al. Bleeding impacting mortality after noncardiac surgery: a protocol to establish diagnostic criteria, estimate prognostic importance, and develop and validate a prediction guide in an international prospective cohort study. *CMAJ Open*. 2017;5(3):E594-E603.
10. Writing Committee for the VISION Study Investigators, Devereaux PJ, Biccadd BM, et al. (**Roshanov PS** an investigator). Association of Postoperative High-Sensitivity Troponin Levels With Myocardial Injury and 30-Day Mortality Among Patients Undergoing Noncardiac Surgery. *JAMA*. 2017;317(16):1642-1651.
11. **Roshanov PS**, Dennis BB, Pasic N, Garg AX, Walsh M. When is a meta-analysis conclusive? A guide to Trial Sequential Analysis with an example of remote ischemic preconditioning for renoprotection in patients undergoing cardiac surgery. *Nephrol Dial Transplant*. 2017;32(suppl_2):ii23-ii30.
12. **Roshanov PS**, Walsh M, Devereaux PJ, MacNeil SD, Lam NN, Hildebrand AM, Acedillo RR, Mrkobrada M, Chow CK, Lee VW, Thabane L, Garg AX. External validation of the Revised Cardiac Risk Index and update of its renal variable to predict 30-day risk of major cardiac complications after non-cardiac surgery: rationale and plan for analyses of the VISION study. *BMJ Open*. 2017;7(1):e013510. Published 2017 Jan 9.
13. Dubois L, Vogt K, Vinden C, Winick-Ng J, McClure JA, **Roshanov PS**, Bell CM, Garg AX. Association between day of the week of elective surgery and postoperative mortality. *CMAJ*. 2017;189(8):E303-E309. doi:10.1503/cmaj.160511
14. **Roshanov PS**, Iansavichus AV, Haynes RB, Garg AX. Empirically Derived Search Filters for the Development of Kidney Disease Clinical Practice Guidelines. *Am J Kidney Dis*. 2016;68(6):989-990.
15. Garg AX, Kurz A, Sessler DI, Cuerden M, Robinson A, Mrkobrada M, Parikh CR, Mizera R, Jones PM, Tiboni M, Font A, Cegarra V, Gomez MFR, Meyhoff CS, Vanhelder T, Chan MTV, Torres D, Parlow J, Clanchet MDN, Amir M, Bidgoli SJ, Pasin L, Martinsen K, Malaga G, Myles P, Acedillo R, **Roshanov PS**, Walsh M, Dresser G, Kumar P, Fleischmann E, Villar JC, Painter T, Biccadd B, Bergese S, Srinathan S, Cata JP, Chan V, Mehra B, Wijeysondera DN, Leslie K, Forget P, Whitlock R, Yusuf S,

Devereaux PJ, for the POISE 2. Effect of Perioperative Aspirin and Clonidine on Acute Kidney Injury A Randomized Clinical Trial. JAMA. 2014 Dec 3;312(21):2254-64.

16. Botto F, et al on behalf of the VISION investigators (**Roshanov PS** an investigator). Myocardial Injury after Noncardiac Surgery: A Large, International, Prospective Cohort Study Establishing Diagnostic Criteria, Characteristics, Predictors, and 30-day Outcomes. Anesthesiol. 2014 Mar 01;120(3):564-78
17. Garg AX, Kurz A, ..., Acedillo R, **Roshanov P**, ..., Devereaux PJ; POISE-2 Investigators. Aspirin and clonidine in non-cardiac surgery: acute kidney injury substudy protocol of the Perioperative Ischaemic Evaluation (POISE) 2 randomised controlled trial. BMJ Open 2014; 4:e004886.

Lavanya Bathini, BSc, MD, FRCPC

2020 – present, Clinician Investigator Program, Western University

Jul 2020 – present, research training

2018 – 2020, Nephrology Fellowship, Western University

Scholarships, Grants, Awards and Podium Presentations

1. Scholarship: Clinician Investigator Program Training Salary Award, 2020-2022, \$160,000
2. Podium Presentation: Pregnancy Outcomes in Women with Chronic Kidney Disease, American Society of Nephrology Conference, 2019
3. Award: Top 20 Abstracts, Canadian Society of Nephrology Conference 2018

Publications:

1. **Bathini L**, Garg AX, Sontrop JM, Weir MA, Blake PG, Dixon SN, McArthur E, Muanda FT. Initiation Dose of Allopurinol and the Risk of Severe Cutaneous Reactions in Older Adults With CKD: A Population-Based Cohort Study. Am J Kidney Dis. 2022 May 26:S0272-6386(22)00704-1. doi: 10.1053/j.ajkd.2022.04.006. Epub ahead of print.
2. Muanda FT, Blake PG, Weir MA, **Bathini L**, Chauvin K, Dixon SN, McArthur E, Sontrop JM, Moist L, Kim RB, Garg AX. Association of Baclofen With Falls and Fractures in Patients With CKD. Am J Kidney Dis. 2021 Feb 10:S0272-6386(21)00081-0. doi: 10.1053/j.ajkd.2020.12.017. Online ahead of print.
3. Muanda FT, Weir MA, **Bathini L**, Clemens KK, Perkovic V, Sood MM, McArthur E, Sontrop JM, Kim RB, Garg AX. Higher-Dose Sitagliptin and the Risk of Congestive Heart Failure in Older Adults with CKD. Clin J Am Soc Nephrol. 2020 Dec 7;15(12):1728-1739. doi: 10.2215/CJN.08310520. Epub 2020 Nov 25.
4. Chauvin KJ, Blake PG, Garg AX, Weir MA, **Bathini L**, Dixon SN, McArthur E, Sontrop JM, Moist L, Kim RB, Muanda FT. Baclofen has a risk of encephalopathy in older adults receiving dialysis. Kidney Int. 2020;S0085-2538(20)30552-4.
5. Muanda FT, Weir MA, **Bathini L**, Blake PG, Chauvin K, Dixon SN, McArthur E, Sontrop JM, Moist L, Garg AX. Association of Baclofen With Encephalopathy in Patients With Chronic Kidney Disease JAMA. 2019;322(20):1987-1995.
6. **Bathini L**, Jandoc R, Kuwornu P, McArthur E, Weir MA, Sood MM, Battistella M, Muanda FT, Liu A, Jain AK, Garg AX. Clinical Outcomes of Failing to Dose-Reduce Cephalosporin Antibiotics in Older Adults with CKD. Clin J Am Soc Nephrol. 2019;14(2):197-205.



Melissa Schorr BSc, MD, FRCPC

2020 – present, Clinician Investigator Program, Western University

2019 – present, MSc degree Clinical Epidemiology & Biostatistics, McMaster University

2018 – 2020, Nephrology Fellowship, Western University

Scholarships, Grants, Awards and Podium Presentations

1. Award: PSI – Research Trainee Award, 2022, \$25,000
2. Award: Clinician Investigator Program Training Salary Award, 2020-2022, \$160,000



3. Award: PAIRO Research Training Fellowship Salary Award, 2020-2022, \$50,000

Publications

1. Varghese A, Lacson E Jr, Sontrop JM, Acedillo RR, Al-Jaishi AA, Anderson S, Bagga A, Bain KL, Bennett LL, Bohm C, Brown PA, Chan CT, Cote B, Dev V, Field B, Harris C, Kalatharan S, Kiaii M, Molnar AO, Oliver MJ, Parmar MS, **Schorr M**, Shah N, Silver SA, Smith DM, Sood MM, St Louis I, Tennankore KK, Thompson S, Tonelli M, Vorster H, Waldvogel B, Zacharias J, Garg AX; Dialysate Magnesium (Dial-Mag) Investigators. A Higher Concentration of Dialysate Magnesium to Reduce the Frequency of Muscle Cramps: A Narrative Review. Can J Kidney Health Dis. 2020 Oct 22;7:2054358120964078. doi: 10.1177/2054358120964078. eCollection 2020.

Andrea Cowan BSc, MD, FRCPC

2020 – present, MSc degree Epidemiology & Biostatistics, Western University

2018 – present, Nephrology Fellowship, Western University



Scholarships, Grants, Awards and Podium Presentations

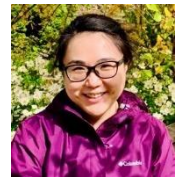
1. Award: PSI – Research Trainee Award, 2020, \$25,000
2. Award: Lloyd B Hession Award, 2017
3. Award: London Health Sciences Centre President's Award for Innovation

Publications

1. **Cowan A**, Jeyakumar N, Kang Y, Dixon SN, Garg AX, Naylor K, Weir MA, Clemens KK. Fracture Risk of Sodium-Glucose Cotransporter-2 Inhibitors in Chronic Kidney Disease. Clin J Am Soc Nephrol. 2022 Jun;17(6):835-842. doi: 10.2215/CJN.16171221. Epub 2022 May 26.
2. Muanda FT, Weir MA, Ahmadi F, Sontrop JM, **Cowan A**, Fleet JL, Blake PG, Garg AX. Higher-Dose Gabapentinoids and the Risk of Adverse Events in Older Adults With CKD: A Population-Based Cohort Study. Am J Kidney Dis. 2021 Dec 31:S0272-6386(21)01048-9.
3. **Cowan A**, Garg AX, McArthur E, Muanda Tsobo F, Weir MA. Cardiovascular Safety of Metoclopramide Compared to Domperidone: A Population-Based Cohort Study. J Can Assoc Gastroenterol. 2020 Dec 18;4(5):e110-e119
4. **Cowan A**, Garg AX. Controlling pain in dialysis care: a choice among undesirable options. Nephrol Dial Transplant. 2020 Nov 6:gfaa256. doi: 10.1093/ndt/gfaa256. Online ahead of print.

Carol Wang BSc, MD

2019 – present, Nephrology Fellowship, Western University



Scholarships, Grants, Awards and Podium Presentations

1. Award: PSI – Research Trainee Award, 2021, \$25,000

Publications

1. **Wang C**, Naylor KL, Luo B, Bota SE, Dixon SN, Yohanna S, Treleaven D, Elliott L, Garg AX. Using Administrative Health Care Databases to Identify Patients With End-Stage Kidney Disease With No Recorded Contraindication to Receiving a Kidney Transplant. Can J Kidney Health Dis. 2022 Jul 21;9:2054358122111712.
2. **Wang C**, Garg AX. Predicting Kidney Function 1 Year After Nephrectomy in Living Kidney Donor Candidates. Transplantation. 2021 Nov 1;105(11):2350-2351.

Graduate Students (PhD and MSc) and Post-Doctoral Students

Ann Young, BSc, PhD, MD

Jan 2020, Clinician Investigator Program, University of Toronto
July 2017 – Dec 2019, Nephrology Fellowship, University of Toronto
July 2014 – Jun 2017, Internal Medicine Residency, University of Toronto
Sept 2010 – Jun 2014, MD, University of Toronto
Sept 2007 – Jun 2010, PhD Epidemiology & Biostatistics, Western University
Sept 2006 – Aug 2007, MSc Epidemiology & Biostatistics, Western University
Summer 2006, 4th year undergraduate, Clinical Research Studentship



Scholarships, Grants, Awards and Podium Presentations

1. Investigator: Safety and Outcomes of Accepting Hypertensive Individuals as Living Kidney Donors, Canadian Institutes of Health Research, Operating grant, 2013-2019, \$352,097
2. Investigator: Standard Criteria Living Kidney Donor Safety Study, Canadian Institutes of Health Research, Operating grant, 2013-2018, \$917,071
3. Investigator: ICES Kidney, Dialysis and Transplantation Research Program, Canadian Institutes of Health Research, Operating grant, 2012-2017, \$802,023
4. Investigator: ICES Kidney, Dialysis and Transplantation Research Program. Academic Medical Organization of Southwestern Ontario, 2012-2014, \$238,030
5. Investigator: Canadian Living Kidney Donor Safety Study. Operating Grant: Population and Public Health. 2008-2009 \$50,000; 2009-2014; \$877,796
6. Investigator: Medical Student Research Grant Optimizing the allocation of 'high-risk' deceased donor kidneys: A Canadian perspective, American Society of Nephrology, 2012-2013, \$26,000 USD
7. Investigator: Optimizing the allocation of 'high-risk' deceased donor kidneys: A Canadian perspective, Canadian Institutes of Health Research, Operating grant: Health Services Evaluation & Interventions Research, 2011-2013, \$132,982
8. Investigator: Reduced kidney function and fragility fractures, Canadian Institutes of Health Research, Operating grant: CIB Clinical Investigation – B (Arthritis, Bone, Skin and Cartilage), 2011-2013, \$99,624
9. Best Poster: Re-examining Pre-donation Renal Function Criteria for Living Kidney Donor Selection: Impact on Long-term Graft Survival – Preliminary Results, Medical Student Research Day, University of Toronto, 2012
10. Investigator: Determining optimal glomerular filtration rate (GFR) criteria for the selection of living kidney donors: an outcome-oriented approach, Astellas Investigator-initiated Study Grant, 2011-2012, \$26,460
11. Investigator: Organ Donor Registries: A Global Scoping Review, Canadian Institutes of Health Research, Knowledge synthesis grant, 2010-2011, \$49,957
12. Doctoral Award: Canadian Institutes of Health Research, 2009-2011, \$70,000
13. Investigator: Accepting Kidneys from Older Donors: Impact on Transplant Recipient Outcomes, Canadian Institutes of Health Research, Operating grant: Health Services Research, 2009-2010, \$97,209
14. Podium Presentation: Biochemical changes in living kidney donation, American Transplant Congress, 2010
15. Best Oral Presentation: Biochemical changes in living kidney donation, Department of Medicine Research Day, 2010
16. Investigator: Cardiovascular disease after acute gastrointestinal infection: Etiology and risk reduction with preventative care, Canadian Institutes of Health Research, Operating grant: Prevention of Cardiovascular and Respiratory Diseases, 2009-2010, \$90,559
17. Scholarship: Ontario Graduate School, Ministry of Training, Colleges and Universities, 2009-2010 (declined)
18. Scholarship: Ministry of Training, Colleges, Universities, Ontario Graduate School, 2008–2009, \$15,000
19. Investigator: A Consensus Workshop on Managing Misattributed Paternity in Living Kidney Donation, Canadian Institutes of Health Research, Meetings, Planning and Dissemination Grant: Genetics and Ethics, 2008-2009, \$5,000
20. Investigator: Living Kidney Donors with Isolated Medical Abnormalities, London Multi-organ Transplant Program, 2008-2009, \$39,620
21. Investigator: Survey on the Thresholds of Acceptable Long-term Risks of Living Kidney Donation for Potential Recipients, Donors and Health Care Practitioners, Lawson Health Research Institute, Lawson Internal Research Fund, 2007-2009, \$11,430

22. Scholarship: Canadian Institutes of Health Research, Masters Award, 2007-2008, \$17,500
23. Scholarship: Ministry of Training, Colleges and Universities, Ontario Graduate School, 2007-2008 (declined)
24. Poster of Distinction: Thresholds of Acceptable Long-term Risks of Living Kidney Donation for Potential Recipients, American Transplant Congress, Donors and Transplant Professionals, 2007
25. Best Poster: (MSc category): Department of Medicine Research Day, 2007

Publications

1. **Young A**, Knoll GA, McArthur E, Dixon SN, Garg AX, Lok CE, Lam NN, Kim JS. Is the Kidney Donor Risk Index a Useful Tool in Non-US Patients? *Can J Kidney Health Dis.* 2018;5:2054358118791148.
2. Lam NN, Lentine KL, Klarenbach S, Sood MM, Kuwornu PJ, Naylor KL, Knoll GA, Kim JS, **Young A**, Garg AX. Validation of Living Donor Nephrectomy Codes. *Can J Kidney Health Dis.* 2018;5:2054358118760833.
3. **Young A**, Dixon SN, Knoll GA, Garg AX, Lok CE, Lam NN, Kim SJ. The Canadian experience using the expanded criteria donor classification for allocating deceased donor kidneys for transplantation. *Can J Kidney Health Dis.* 2016;3:15. Published 2016 Mar 24.
4. **Young A**, Garg AX. Waiting for a Deceased Kidney Donor Transplant: Better a Small Fish Than an Empty Dish? *Clin J Am Soc Nephrol.* 2016;11(1):12-13.
5. **Young A**, Kim SJ, Garg AX, Huang A, Knoll G, Prasad GV, Treleaven D, Lok CE; Donor Nephrectomy Outcomes Research (DONOR) Network. Living kidney donor estimated glomerular filtration rate and recipient graft survival. *Nephrol Dial Transplant.* 2014 Jan;29(1):188-95.
6. Li AH, Kim SJ, Rangrej J, Scales DC, Shariff S, Redelmeier DA, Knoll G, **Young A**, Garg AX. Validity of physician billing claims to identify deceased organ donors in large healthcare databases. *PLoS One.* 2013;8(8):e70825
7. Hizo-Abes P, Clark WF, Sontrop JM, **Young A**, Huang A, Thiessen-Philbrook H, Austin P, Garg AX; Walkerton Health Study Investigators. Cardiovascular disease risk after *Escherichia coli* O157:H7 gastroenteritis. *CMAJ.* 2013 Jan 8;185(1):E70-7
8. Lam N, Huang A, Feldman LS, Gill JS, Karpinski M, Kim J, Klarenbach SW, Knoll GA, Lentine KL, Nguan CY, Parikh CR, Prasad GVR, Treleaven DJ, **Young A**, Garg AX for the Donor Nephrectomy Outcomes Research (DONOR) Network. Acute dialysis risk in living kidney donors. *Nephrol Dial Transplant.* 2012 Aug;27(8):3291-5
9. Garg AX, Pouget J, **Young A**, Huang A, Boudville N, Hodsman A, Adachi JD, Leslie WD, Cadarette SM, Lok CE, Monroy-Cuadros M, Prasad GVR, Thomas SM, Naylor K, Treleaven D. Fracture risk in living kidney donors. *Am J Kidney Dis.* 2012 Jun;59(6):770-6
10. **Young A**, Hodsman AB, Boudville N, Geddes C, Gill J, Goltzman D, Jassal V, Klarenbach S, Knoll G, Muirhead N, Prasad R, Treleaven D, Garg AX. Bone and mineral metabolism and FGF-23 after kidney donation. *Am J Kidney Dis.* 2012 Jun;59(6):761-9
11. Garg AX, Meirambayeva A, Huang A, Kim SJ, Prasad GVR, Knoll G, Boudville N, Lok C, McFarlane P, Karpinski M, Storsley L, Klarenbach S, Lam N, Thomas SM, Dipchand C, Reese P, Doshi M, Gibney E, Taub K, **Young A**. Cardiovascular disease in people who donated a kidney: A matched cohort study. *BMJ.* 2012 Mar 1; 344:e1203
12. **Young A**, Kim SJ, Speechley MR, Huang A, Knoll GA, Prasad GVR, Treleaven D, Diamant MJ, Garg AX. Accepting kidneys from older living donors: Impact on transplant recipient outcomes. *Am J Transplant.* 2011 Apr;11(4):743-50
13. Diamant MJ, **Young A**, Gallo K, Xi W, Suri RS, Garg AX, Moist LM. Hemodialysis in a satellite unit: Clinical performance target attainment and health-related quality of life. *Clin J Am Soc Nephrol.* 2011 Jul;6(7):1692-9
14. Horvat LD, Cuerden MS, Kim SJ, Koval JJ, **Young A**, Garg AX. Informing the debate: Rates of living kidney donation in nations with presumed consent. *Ann Intern Med.* 2010 Nov 16;153(10):641-9. [summary for patients: *Ann Intern Med.* 2010 Nov 16;153(10):148]
15. Storsley L, **Young A**, Rush D, Nickerson P, Ho J, Suon V, Karpinski M. Long-term medical outcomes among Aboriginal living kidney donors. *Transplantation.* 2010 27;90(4):401-6
16. Hizo-Abes P, **Young A**, Reese PP, McFarlane P, Wright L, Cuerden M, Garg AX. Attitudes to sharing personal health information in living kidney donation. *Clin J Am Soc Nephrol.* 2010 Apr;5(4):717-22 [Press release, American Society of Nephrology]
17. **Young A**, Garg AX. It's about time: Extending our understanding of cardiovascular risk from chronic kidney disease. *J Am Soc Nephrol.* 2009, Nov 5 (an editorial)

18. Yang RC, **Young A**, Nevis IFP, Lee D, Jain AK, Dominic A, Garg AX. Life insurance for living kidney donors: A Canadian undercover study. *Am J Transplant*. 2009;9(7):1585-90
19. **Young A**, Kim SJ, Gibney EM, Parikh CR, Cuerden MS, Horvat LD, Hizo-Abes P, Garg AX. Discovering misattributed paternity in living kidney donation: Prevalence, preference and practice. *Transplantation*. 2009 May 27; 87 (10); 1429-35
20. Iordanous Y, Seymour N, **Young A**, Johnson J, Iansavichus AV, Cuerden MS, Gill JS, Poggio E, Garg AX; Recipient outcomes for expanded criteria living kidney donors: The disconnect between current evidence and practice. *Am J Transplant*. 2009;9(7):1558-73
21. **Young A**, Storsley L, Garg AX, Treleaven D, Ngan CY, Cuerden MS, Karpinski M. Health outcomes for living kidney donors with isolated medical abnormalities: a systematic review. *Am J Transplant*. 2008 Sep;8(9):1878-90
22. **Young A**, Karpinski M, Treleaven D, Waterman A, Parikh CR, Thiessen-Philbrook H, Yang RC, Garg AX. Differences in tolerance for health risk to the living donor among potential donors, recipients, and transplant professionals. *Kidney Int*. 2008 May;73(10):1159-66. [Editorial: *Kidney Int* 2008;73(10):1108-10]
23. **Young A**, Nevis IFP, Geddes C, Gill J, Boudville N, Storsley L, Garg AX: Do biochemical measures change in living kidney donors? A systematic review. *Nephron Clin Pract*. 2007;107(3):c82-9
24. Housawi A, **Young A**, Boudville N, Thiessen-Philbrook H, Muirhead N, Rehman F, Parikh C, Al-Obaidli A, El-Triki A, Garg AX. Transplant professionals vary in the long-term medical risks they communicate to potential living kidney donors: An international survey. *Nephrol Dial Transplant* 2007; 22(10):3040-5

Salimah Shariff, BMath, PhD

2014- Staff Scientist, Chief Research & Operations Officer, ICES Western
 Apr 2008 – Apr 2011, PhD Epidemiology & Biostatistics, Western University
 Sept 2006 – Mar 2008, MSc Epidemiology & Biostatistics, Western University



Scholarships, Grants, Awards and Podium Presentations

1. Investigator: Comparing PubMed and Google Scholar on evidence retrieval. Physicians' Services Incorporated Foundation, \$58,522
2. Investigator: Filtering MEDLINE for Renal Information: Renal Sub-Filters, Canadian Institutes of Health Research, Operating Grant Knowledge Translation and Exchange, 2011-2012, \$59,951
3. Scholarship: Canadian Institutes of Health Research – Frederick Banting & Charles Best Canada Graduate Scholarship - Doctoral Award, 2009-2011, \$70,000
4. Investigator: Impact of MEDLINE filters on evidence retrieval, Canadian Institutes of Health Research, Operating Grant, Knowledge Translation and Exchange 2009-2010, \$85,142
5. Scholarship: Ministry of Training, Colleges and Universities, Ontario Graduate School, 2007–2008, \$15,000

Publications

1. **Shariff SZ**, Bejaimal SA, Sontrop JM, Iansavichus AV, Haynes RB, Weir MA, Garg AX. Retrieving Clinical Evidence: A Comparison of PubMed and Google Scholar for Quick Clinical Searches. *J Med Internet Res*. 2013 Aug 15;15(8):e164
2. **Shariff SZ**, Sontrop JM, Iansavichus AV, Haynes RB, Weir MA, Gandhi S, Cuerden MS, Garg AX. Availability of renal literature in six bibliographic databases. *Clin Kidney J*. 2012 Dec;5(6):610-617
3. Iansavichus AV, Haynes RB, Lee CW, Wilczynski NL, McKibbin A, **Shariff SZ**, Blake PG, Lindsay RM, Garg AX. Dialysis search filters for PubMed, Ovid MEDLINE, and Embase databases. *Clin J Am Soc Nephrol*. 2012 Oct;7(10):1624-31
4. Lee CW, Iansavichus AV, Haynes RB, **Shariff SZ**, Wilczynski N, McKibbin A, Rehman F, Garg AX. Kidney transplantation search filters for PubMed, Ovid Medline, and Embase. *Transplantation*. 2012 Mar 15;93(5):460-6
5. **Shariff SZ**, Sontrop JM, Haynes RB, Iansavichus AV, McKibbin KA, Wilczynski NL, Weir MA, Speechley MR, Thind A, Garg AX. Impact of PubMed search filters on the retrieval of evidence by physicians. *CMAJ*. 2012 Feb 21;184(3):E184-90. Erratum in: *CMAJ*. 2012 Sep 4;184(12):1394
6. Bejaimal SA, Haynes RB, **Shariff S**, Garg AX. Finding and evaluating renal evidence: bridging the knowledge gap. *Adv Chronic Kidney Dis*. 2012 Jan;19(1):5-10
7. Tawadrous D, **Shariff SZ**, Haynes RB, Iansavichus AV, Jain AK, Garg AX. Use of clinical decision support systems for kidney-related drug prescribing: systematic review. *Am J Kidney Dis*. 2011 Dec;58(6):903-14

8. Iansavichus AV, Haynes RB, **Shariff SZ**, Weir M, Wilczynski NL, McKibbon A, Rehman F, Garg AX. Optimal Search Filters for Renal Information in EMBASE. Am J Kidney Dis. 2010 Jul;56(1):14-22
9. **Shariff SZ**, Bejaimal SA, Sontrop JM, Iansavichus AV, Weir MA, Haynes RB, Speechley MR, Thind A, Garg AX. Searching for medical information online: a survey of Canadian nephrologists. J Nephrol. 2011 Feb 23
10. **Shariff SZ**, Cuerden MS, Haynes RB, McKibbon KA, Wilczynski NL, Iansavichus AV, Speechley MR, Thind A, Garg AX. Evaluating the impact of MEDLINE filters on evidence retrieval: study protocol. Implement Sci. 2010 Jul 20;5:58
11. Garg AX, Iansavichus AV, Wilcznski NL, Kastner M, Baier LA, **Shariff SZ**, Rehman F, Weir M, McKibbon KA, Haynes RB. Filtering MEDLINE for a clinical discipline. BMJ. 2009 Sep 18;339:b3435
12. Horvat L, **Shariff SZ**, Garg AX. Global trends in rates of living kidney donation. Kidney Int. 2009 May;75(10):1088-98
13. **Shariff SZ**, Cuerden MS, Jain AK, Garg AX. The secret of immortal time bias in epidemiologic studies. J Am Soc Nephrol. 2008 May;19(5):841-3

Meghan Vlasschaert, BSc, MSc

Aug 2008, MD, University of Calgary (followed by Internal Medicine, Assistant Professor Calgary)
 Sept 2006 – July 2008, MSc Epidemiology & Biostatistics, Western University

Scholarships, Grants, Awards and Podium Presentations

1. Investigator: Improving Renal Codes Within Health Administrative Data: Systematic Review, Canadian Institutes of Health Research, Synthesis Grant: Knowledge Translation, 2008-2009, \$93,040
2. Scholarship: National Sciences and Engineering Research Council of Canada, 2007–2008 \$17,500
3. Scholarship: Ministry of Training, Colleges and Universities, Ontario Graduate School, 2007–2008 (declined)
4. Award: Carol Buck Scholarship, Western University Epidemiology, 2007
5. Scholarship: National Sciences and Engineering Research Council Canada, 2006–2007, \$17,500

Publications

1. **Vlasschaert ME**, Bejaimal SA, Hackam DG, Quinn R, Cuerden MS, Oliver MJ, Iansavichus A, Sultan N, Mills A, Garg AX. Validity of administrative database coding for kidney disease: a systematic review. Am J Kidney Dis. 2011 Jan;57(1):29-43
2. Jain A, Bhayana S, **Vlasschaert M**, House A. A formula to predict corrected calcium in haemodialysis patients. Nephrol Dial Transplant. 2008 Sep;23(9):2884-8
3. Garg AX, Ramesh Prasad GV, Thiessen-Philbrook HR, Li P, Melo M, Gibney EM, Knoll G, Karpinski M, Parikh CR, Gill J, Storsley L, **Vlasschaert M**, Mamdani M. Cardiovascular disease and hypertension risk in living kidney donors: An Analysis of Health Administrative Data in Ontario, Canada. Transplantation. 2008 Aug 15;86(3):399-406



Immaculate Nevis, MD, MSc, PhD

Epidemiologist, Director at AMAPCEO (www.amapceo.on.ca), Adjunct Professor Brock University
 Sept 2009 – Jun 2013, PhD Health Research Methodology, McMaster University
 July 2009 – Aug 2009, Clinical Research Studentship
 Sept 2007 – Jun 2009, MSc Epidemiology & Biostatistics, Western University
 June 2006 – Aug 2007, Clinical Research Studentship

Scholarships, Grants, Awards and Podium Presentations

1. Investigator: Hypertensive disorders of pregnancy after bacterial gastroenteritis, Canadian Institutes of Health Research, Operating Grant: Secondary Analysis of Databases, 2011-2013, \$86,136
2. Scholarship: Ministry of Training, Colleges and Universities, Ontario Graduate School, 2011-2012, \$15,000
3. Scholarship: Ministry of Training, Colleges and Universities, Ontario Graduate School, 2010-2011, \$15,000
4. Investigator: Risk of hypertensive disorders in pregnancy after living kidney donation, Canadian Institutes of Health Research, Operating Grant: Maternal and Child Health, 2008-2010, \$99,020
5. Investigator: Pregnancy and the kidney, Canadian Institutes of Health Research, Meetings, Planning and Dissemination Grant: Gender, Sex and Health and Human Development Child & Youth Health, 2008- 2009, \$10,000



6. Investigator: The risk of preeclampsia in female kidney donors, Lawson Health Research Institute, Lawson Internal Research Fund, 2007-2009, \$9,000
7. Scholarship: Canadian Institutes of Health Research, Masters Award, 2007–2008, \$17,500
8. Award: Student Essay Winner, Justice Emmett Hall Memorial Foundation (MSc category), 2008

Publications

1. Garg AX, **Nevis IF**, McArthur E, Sontrop JM, Koval JJ, Lam NN, Hildebrand AM, Reese PP, Storsley L, Gill JS, Segev DL, Habbous S, Bugeja A, Knoll GA, Dipchand C, Monroy-Cuadros M, Lentine KL, the DONOR Network. Gestational Hypertension and Preeclampsia in Living Kidney Donors. *N Engl J Med*. 2015 Jan 8;372(2):124-33.
2. **Nevis IF**, Sontrop JM, Clark WF, Huang A, McDonald S, Thabane L, Moist L, Macnab JJ, Suri R, Garg AX. Hypertension in pregnancy after Escherichia coli O157:H7 gastroenteritis: a cohort study. *Hypertens Pregnancy*. 2013 Nov;23(4):390-400.
3. Li AH, Rosenblum AM, **Nevis IF**, Garg AX. Adolescent classroom education on knowledge and attitudes about deceased organ donation: a systematic review. *Pediatr Transplant*. 2013 Mar;17(2):119-28
4. **Nevis IF**, Reitsma A, Dominic A, MacDonald S, Thabane L, Akl EA, Hladunewich M, Akbari A, Joseph G, Sia W, Iansavichus AV, Garg AX. Pregnancy outcomes in women with chronic kidney disease: A systematic review. *Clin J Am Soc Nephrol*. 2011 Nov;6(11):2587-98
5. Moist L, Sontrop JM, Garg AX, Clark WF, Suri RS, Gratton RJ, Salvadori M, **Nevis I**, Macnab JJ. Risk of pregnancy-related hypertension within five years of exposure to drinking water contaminated with E.coli O157:H7. *J Clin Hyperten*. 2010 Aug;12(8):613-20
6. **Nevis IF**, Garg AX. Maternal and fetal outcomes after living kidney donation. *Am J Transplant*. 2009 Apr;9(4):661-8
7. Yang RC, Young A, **Nevis IF**, Lee D, Jain AK, Dominic A, Garg AX. Life insurance for living kidney donors: A Canadian undercover study. *Am J Transplant*. 2009 Jul; 9(7):1585-90
8. **Nevis IF**, Mathew A, Novick R, Parikh CR, Devereaux PJ, Natarajan MK, Iansavichus AV, Cuerden M, Garg AX. Optimal Method of Revascularization in Patients on Dialysis: Systematic Review. *Clin J Am Soc Nephrol*. 2009 Feb; 4: 369–378
9. Mathew A, Devereaux PJ, O'Hare A, Tonelli M, Thiessen-Philbrook H, **Nevis IF**, Iansavichus AV, Garg AX. Chronic kidney disease and postoperative mortality: a systematic review and meta-analysis. *Kidney Int*. 2008 May;73(9):1069-81
10. Young A, **Nevis IF**, Geddes C, Gill J, Boudville N, Storsley L, Garg AX: Do biochemical measures change in living kidney donors? A systematic review. *Nephron Clin Pract*. 2007;107(3):c82-9

Lucy Horvat, BMSc, MSc, MD

Sept 2009, MD, Queen's University, followed by Family Medicine
 2008–2009, MSc Epidemiology & Biostatistics, Western University
 Summer 2008, 5th year undergraduate, Clinical Research Studentship
 Summer 2007, 4th year undergraduate, Clinical Research Studentship
 Summer 2006, 3rd year undergraduate, Clinical Research Studentship



Scholarships, Grants, Awards and Podium Presentations

1. Investigator: Organ Donor Registries: A Global Scoping Review, Canadian Institutes of Health Research, Knowledge synthesis grant, 2010-2011, \$49,957
2. Award and Podium Presentation: Informing the Debate: Will Presumed Consent Increase Transplantation? Canadian Society of Nephrology, Trainee Abstract Award, May 2010
3. Scholarship: Canadian Institutes of Health Research, Masters Award (declined)
4. Scholarship: Ministry of Training, Colleges and Universities, Ontario Graduate School, 2008-2009, \$15,000
5. Investigator: Informing the Debate: Will Presumed Consent Increase Kidney Transplantation, Lawson Health Research Institute, Lawson Internal Research Fund, 2008-2010, \$9,000
6. Investigator: A Consensus Workshop on Managing Misattributed Paternity in Living Kidney Donation, Canadian Institutes of Health Research, Meetings, Planning and Dissemination Grant: Genetics and Ethics, 2008-2009, \$5,000

Publications

1. Rosenblum AM, **Horvat LD**, Siminoff LA, Prakash V, Beitel J, Garg AX. The authority of next-of-kin in explicit and presumed consent systems for deceased organ donation: An analysis of 54 Nations. *Nephrol Dial Transplant*. 2012 Jun;27(6):2533-46
2. **Horvat LD**, Cuerden MS, Kim SJ, Koval JJ, Young A, Garg AX. Informing the debate: Rates of living kidney donation in nations with presumed consent. *Ann Intern Med*. 2010 Nov 16;153(10):641-9 [patient summary *Ann Intern Med* 2010 Nov 16;153(10):148]
3. Young A, Kim SJ, Gibney EM, Parikh CR, Cuerden MS, **Horvat LD**, Hizo-Abes P, Garg AX. Discovering misattributed paternity in living kidney donation: Prevalence, preference and practice. *Transplantation*. 2009 May 27;87(10):1429-35
4. **Horvat L**, Shariff SZ, Garg AX. Global trends in rates of living kidney donation. *Kidney Int*. 2009 May;75(10):1088-98 [Editorial: *Kidney Int*. 2009 May;75(10):1003-5]

Sonja Gandhi-Banga, BSc, PhD

2017 – Deputy Director, Epidemiology & Benefit-Risk Evaluation, Sanofi- Pasteur
 Sept 2010 – August 2016, PhD Epidemiology & Biostatistics, Western University
 Sept 2009 – Aug 2010, MSc Epidemiology & Biostatistics, Western University



Scholarships, Grants, Awards and Podium Presentations

1. Investigator: Acute kidney injury from antiviral drugs for herpes infections. Canadian Institutes of Health Research, Health Services Research, 2011-2013, \$99,209
2. Investigator: Severe Electrolyte Disorders from Common Medications: Risk and Mitigation. Canadian Institutes of Health Research, Health Services Research, 2011-2013, \$139,828
3. Scholarship: Western Graduate Research Scholarship (Doctoral), 2010-2014, \$30,000
4. Scholarship: Ministry of Training, Colleges and Universities, Ontario, Science & Technology, 2013-2014, \$15,000
5. Scholarship: Ministry of Training, Colleges and Universities, Ontario, Science & Technology, 2012-2013, \$15,000
6. Scholarship: Canadian Institutes of Health Research, Drug Safety and Effectiveness Cross-Disciplinary Training, 2011-2012, \$17,850
7. Scholarship: Ministry of Training, Colleges and Universities, Ontario, Science & Technology, 2010-2011, \$10,000
8. Scholarship: Western Graduate Research Scholarship (Master's), 2009-2010, \$7,500

Publications

1. Iskander C, McArthur E, Nash DM, **Gandhi-Banga S**, Weir MA, Muanda FT, Garg AX. Identifying Ontario geographic regions to assess adults who present to hospital with laboratory-defined conditions: a descriptive study [published correction appears in *CMAJ Open*. 2020 Feb 24;8(1):E120]. *CMAJ Open*. 2019;7(4):E624-E629. Published 2019 Oct 22.
2. Singh N, **Gandhi S**, McArthur E, Moist L, Jain AK, Liu AR, Sood MM, Garg AX. Kidney function and the use of nitrofurantoin to treat urinary tract infections in older women. *CMAJ*. 2015 Jun 16;187(9):648-56.
3. Hwang YJ, Dixon SN, Reiss JP, Wald R, Parikh CR, **Gandhi S**, Shariff SZ, Pannu N, Nash DM, Rehman F, Garg AX. Atypical antipsychotic drugs and the risk for acute kidney injury and other adverse outcomes in older adults: a population-based cohort study. *Ann Intern Med*. 2014 Aug 19;161(4):242-8.
4. Li DQ, Kim R, McArthur E, Fleet JL, Bailey DG, Juurlink D, Shariff SZ, Gomes T, Mamdani M, **Gandhi S**, Dixon S, Garg AX. Risk of adverse events among older adults following co-prescription of clarithromycin and statins not metabolized by cytochrome P450 3A4. *CMAJ*. 2015 Feb 17;187(3):174-80.
5. Tawadrous D, Dixon S, Shariff SZ, Fleet J, **Gandhi S**, Jain AK, Weir MA, Gomes T, Garg AX. Altered mental status in older adults with histamine2-receptor antagonists: A population-based study. *Eur J Intern Med*. 2014 Oct;25(8):701-9.
6. Weir MA, Fleet JL, Vinden C, Shariff SZ, Liu K, Song H, Jain AK, **Gandhi S**, Clark WF, Garg AX. Hyponatremia and sodium picosulfate bowel preparations in older adults. *Am J Gastroenterol*. 2014 May;109(5):686-94.
7. Hwang YJ, Dixon SN, Reiss JP, Wald R, Parikh CR, **Gandhi S**, Shariff SZ, Pannu N, Nash DM, Rehman F, Garg AX. Atypical antipsychotic drugs and the risk of acute kidney injury and other adverse outcomes in older adults: a population-based cohort study. *Ann Intern Med*. 2014, Aug 19;161(4):242-8.

8. Dev V, Dixon SN, Fleet JL, **Gandhi S**, Gomes T, Harel Z, Jain AK, Shariff SZ, Tawadrous D, Weir MA, Garg AX. Higher anti-depressant dose and major adverse outcomes in moderate chronic kidney disease: a retrospective population-based study. *BMC Nephrol*. 2014 May 10;15:79.
9. Weir MA, Fleet JL, Vinden C, Shariff SZ, Liu K, Song H, Jain AK, **Gandhi S**, Clark WF, Garg AX. Hyponatremia and sodium picosulfate bowel preparations in older adults. *Am J Gastroenterol*. 2014 May;109(5):686-94.
10. **Gandhi S** and Garg AX. Statin toxicity from macrolide antibiotic coprescription. *Ann Intern Med*. 2013;159(8):575 [Commentary/Letter].
11. **Gandhi S**, Fleet JL, Bailey DG, McArthur E, Wald R, Rehman F, Garg AX. Calcium-channel blocker-clarithromycin drug interactions and acute kidney injury. *JAMA*. 2013 Dec 18;310(23):2544-53.
12. Fleet JL, Shariff SZ, Bailey DG, **Gandhi S**, Juurlink DN, Nash DM, Mamdani M, Gomes T, Patel AM, Garg AX. Comparing two types of macrolide antibiotics for the purpose of assessing population-based drug interactions. *BMJ Open*. 2013 Jul 11;3(7).
13. Patel AM, Shariff S, Bailey DG, Juurlink DN, **Gandhi S**, Mamdani M, Gomes T, Fleet J, Hwang YJ, Garg AX. Statin toxicity from macrolide antibiotic coprescription: a population-based cohort study. *Ann Intern Med*. 2013 Jun 18;158(12):869-76.
14. Lam NN, Weir MA, Yao Z, Blake PG, Beyea MM, Gomes T, **Gandhi S**, Mamdani M, Wald R, Parikh CR, Hackam DG, Garg AX. Risk of acute kidney injury from oral acyclovir: a population-based study. *Am J Kidney Dis*. 2013 May;61(5):723-9.
15. **Gandhi S**, Shariff SZ, Beyea MM, Weir MA, Hands T, Kearns G, Garg AX. Identifying geographical regions serviced by hospitals to assess laboratory-based outcomes. *BMJ Open* 2013;3:e001921.
16. Fleet JL, Shariff SZ, **Gandhi S**, Weir MA, Jain AK, Garg AX. Validity of the International Classification of Diseases Tenth Revision code for hyperkalemia in elderly patients at presentation to an emergency department and at hospital admission. *BMJ Open* 2012;2:e002011.
17. **Gandhi S**, Shariff SZ, Fleet JL, Weir MA, Jain AK, Garg AX. Validity of the International Classification of Diseases Tenth Revision code for hospitalization with hyponatremia in elderly patients. *BMJ Open* 2012;2:e001727.
18. Hwang YJ, Shariff SZ, **Gandhi S**, Wald R, Clark E, Fleet JL, Garg AX. Validity of the International Classification of Diseases, Tenth Revision code for acute kidney injury in elderly patients at presentation to emergency department and at hospital admission. *BMJ Open* 2012;2:e001821.
19. Shariff SZ, Sontrop JM, Iansavichus AV, Haynes RB, Weir MA, **Gandhi S**, Cuerden MS, Garg AX. Availability of renal literature in six bibliographic databases. *Clin Kidney J* 2012;0:1-8.

Aizhan Meirambayeva, BSc, MSc

Sept 2010 – May 2011, 1-year training. Epidemiology & Biostatistics, Western University

Publications

1. Garg AX, **Meirambayeva A**, Huang A, Kim SJ, Prasad GVR, Knoll G, Boudville N, Lok C, McFarlane P, Karpinski M, Storsley L, Klarenbach S, Lam N, Thomas SM, Dipchand C, Reese P, Doshi M, Gibney E, Taub K, Young A. Cardiovascular disease in people who donated a kidney: A matched cohort study. *BMJ*. 2012 Mar 1; 344:e1203



Mitesh Shah, MD, MSc

Sept 2010 – Jul 2012, MSc Epidemiology & Biostatistics, Western University

Scholarships, Grants, Awards and Podium Presentations

1. Investigator: Preventing Peri-operative Acute Kidney Injury: SIRS & POISE-2 Sub-studies, Canadian Institutes of Health Research Operating grant, Clinical Investigation Committee C, 2012-2017, \$502,500
2. Investigator: Preoperative Medications and Acute Kidney Injury: A VISION sub-study, Canadian Institutes of Health Research Operating grant, Clinical Investigation Committee C, 2011-2013, \$119,920

Publications



1. **Shah M**, Jain AK, Brunelli SM, Coca SG, Devereaux PJ, James MT, Luo J, Molnar AO, Mrkobrada M, Pannu N, Parikh CR, Paterson M, Shariff S, Wald R, Walsh M, Whitlock R, Wijeyesundera DN, Garg AX. Association between angiotensin converting enzyme inhibitor or angiotensin receptor blocker use prior to major elective surgery and the risk of acute dialysis. *BMC Nephrol*. 2014 Apr 2;15:53.
2. Acedillo RR, **Shah M**, Devereaux PJ, Li L, Iansavichus AV, Walsh M, Garg AX. The risk of perioperative bleeding in patients with chronic kidney disease: a systematic review and meta-analysis. *Ann Surg*. 2013 Dec;258(6):901-13.

Alvin Li, BSc, PhD

2019 – Scientist, Alberta Health Sciences

2017 – 2019 – Research Fellow

2011 – 2016, PhD Epidemiology & Biostatistics, Western University

Scholarships, Grants, Awards and Podium Presentations

1. Scholarship: Canadian Institutes for Health Research Post-Doctoral Research Fellowship, 2015-2018, \$135,000
2. Investigator: Grant. Hospital Donation Physicians: Building an Evaluation Framework, Canadian Institute of Health Research, 2014, \$9,730.
3. Scholarship: Michael Smith Foreign Exchange Study Supplement, 2016, \$6,000
4. Scholarship: Canadian Institute for Health Research Doctoral Scholarship, 2014-2017, \$105,000
5. Scholarship: Allied Health Doctoral Scholarship, Kidney Foundation of Canada, 2013-2015, \$58,000
6. Scholarship: Ministry of Training, Colleges and Universities, Ontario, Science & Technology, 2013-2014 (declined)
7. Scholarship: Heart and Stroke Foundation, Jump Start Resuscitation, 2012-2013, \$18,000
8. Scholarship: Ministry of Training, Colleges and Universities, Ontario, Science & Technology, 2012-2013 (declined)
9. Award: ASPHER Young Researchers Forum, 2014, (500 Euros)
10. Award: Organ Donation Strategy - Reimbursement and Job-Protection Policy, 3rd Annual Health Innovation Challenge, Health Council of Canada, Health Policy category, 2012, \$1,000
11. Award: Global Opportunities Exchange Program, 2012, \$1,000

Publications

1. Imtiaz S, **Li AH**, Garg AX, Dhanani S, Nolan S. A Correlation Between Annual Rates of Overdose Mortality and Deceased Organ Donation in Canada. *Prog Transplant*. 2019;29(2):198-199.
2. Perl J, McArthur E, Tan VS, Nash DM, Garg AX, Harel Z, **Li AH**, Sood MM, Ray JG, Wald R. ESRD among Immigrants to Ontario, Canada: A Population-Based Study. *J Am Soc Nephrol*. 2018;29(7):1948-1959.
3. Naylor KL, Knoll GA, Allen B, **Li AH**, Garg AX, Lam NN, McCallum MK, Kim SJ. Trends in Early Hospital Readmission After Kidney Transplantation, 2002 to 2014: A Population-Based Multicenter Cohort Study. *Transplantation*. 2018;102(4):e171-e179.
4. **Li AH**, Garg AX, Prakash V, Grimshaw JM, Taljaard M, Mitchell J, Matti D, Linklater S, Naylor KL, Dixon S, Faulds C, Bevan R, Getchell L, Knoll G, Kim SJ, Sontrop J, Bjerre LM, Tong A, Presseau J. Promoting deceased organ and tissue donation registration in family physician waiting rooms (RegisterNow-1 trial): study protocol for a pragmatic, stepped-wedge, cluster randomized controlled registry. *Trials*. 2017;18(1):610. Published 2017 Dec 21.
5. **Li AH**, Al-Jaishi AA, Weir M, Lam NN, Maclean J, Dhanani S, Kim SJ, Knoll G, Garg AX. Familial Consent for Deceased Organ Donation Among Immigrants and Long-term Residents in Ontario, Canada: A Population-Based Retrospective Cohort Study. *Can J Kidney Health Dis*. 2017;4:2054358117735564. Published 2017 Oct 20.
6. Naylor KL, McKenzie S, Cherry C, McArthur E, **Li AH**, McCallum MK, Kim SJ, Prakash V, Knoll GA, Garg AX. Evaluation of a Hockey Deceased Organ Donation Awareness Campaign: A Population-Based Cohort Study. *Can J Kidney Health Dis*. 2017;4:2054358117717252. Published 2017 Jul 5.



7. **Li AH**, Lam NN, Dhanani S, Weir M, Prakash V, Kim J, Knoll G, Garg AX. Registration for deceased organ and tissue donation among Ontario immigrants: a population-based cross-sectional study. *CMAJ Open*. 2016;4(4):E551-E561. Published 2016 Oct 11.
8. Naylor KL, Dixon SN, Garg AX, Kim SJ, Blake PG, Nesrallah GE, McCallum MK, D'Antonio C, **Li AH**, Knoll GA. Variation in Access to Kidney Transplantation Across Renal Programs in Ontario, Canada. *Am J Transplant*. 2017;17(6):1585-1593.
9. Lam NN, Kim SJ, Knoll GA, McArthur E, Lentine KL, Naylor KL, **Li AH**, Shariff SZ, Ribic CM, Garg AX. The Risk of Cardiovascular Disease Is Not Increasing Over Time Despite Aging and Higher Comorbidity Burden of Kidney Transplant Recipients. *Transplantation*. 2017;101(3):588-596.
10. **Li AH**, Lam NN, Naylor KL, Garg AX, Knoll GA, Kim SJ. Early Hospital Readmissions After Transplantation: Burden, Causes, and Consequences. *Transplantation*. 2016;100(4):713-718.
11. **Li AH**, McArthur E, Isenor C, Prakash V, Maclean J, Kim JS, Knoll GA, Garg AX. Donor registration and Familial Consent for Organ Donation among Chinese and South Asians in Ontario, *PLoS One*. 2015[In Press]
12. **Li AH**, Thomas SM, Farag A, Duffett M, Garg AX, Naylor KL. Quality of Survey Reporting in Nephrology Journals: A Methodologic Review. *Clin J Am Soc Nephrol*. 2014 Sep 29.
13. **Li AH**, Dixon S, Prakash V, Kim SJ, Knoll GA, Lam NN, Garg AX. Physician Registration for Deceased Organ Donation. *JAMA* 2014 Jul 16;312(3).
14. **Li AH**, Naylor KL, Garg AX. Interventions for increasing solid organ donor registration (Study Protocol). *Cochrane Database of Systematic Reviews*. 2013; 11.
15. **Li AH**, Kim SJ, Rangrej J, Scales DC, Shariff S, Redelmeier D, Knoll G, Young A, Garg AX. Validity of physicians billing claims to identify deceased organ donors in large healthcare databases. *PLoS ONE*. 2013;8(8):e70825.
16. Naylor KL, **Li AH**, Ngan N, Hodsman AB, Sophie JA, Garg AX. Fracture Risk in Kidney Transplant Recipients: A Systematic Review. *Transplantation*. 2013;95(12):1461-1470.
17. **Li AH**, Rosenblum AR, Nevis I, Garg AX. Adolescent education on knowledge and attitude of organ donation: A Systematic Review. *Pediatr Transplant*. 2013;17(2):119-128.
18. Rosenblum AR, **Li AH**, Roels L, Stewart B, Prakash V, Beitel J, Young K, Shemie S, Nickerson P, Garg AX. Worldwide Variability in Deceased Organ Donation Registries. *Transplant Int*. 2012;25(8):801-811.

Joseph Hwang, BSc, Msc, MD

2019 - Assistant Professor of Medicine, Johns Hopkins University School of Medicine
 2013 – 2019 – Medical School and Internal Medicine Residency Training
 Sept 2011 – July 2013, MSc Epidemiology & Biostatistics, Western University
 Summer 2011, 4th year undergraduate, Clinical Research Studentship



Scholarships, Grants, Awards and Podium Presentations

1. Scholarship: Canadian Institutes of Health Research, Drug Safety and Effectiveness Cross-Disciplinary Training, 2012-2013, \$17,850

Publications

1. **Hwang YJ**, Dixon SN, Reiss JP, Wald R, Parikh CR, Gandhi S, Shariff SZ, Pannu N, Nash DM, Rehman F, Garg AX. Atypical antipsychotic drugs and the risk of acute kidney injury and other adverse outcomes in older adults: a population-based cohort study. *Ann Intern Med*. 2014, Aug 19;161(4):242-8
2. Patel AM, Shariff S, Bailey DG, Juurlink DN, Gandhi S, Mamdani M, Gomes T, Fleet J, **Hwang YJ**, Garg AX. Statin toxicity from macrolide antibiotic coprescription: a population-based cohort study. *Ann Intern Med*. 2013 Jun 18;158(12):869-76
3. **Hwang YJ**, Shariff SZ, Gandhi S, Wald R, Clark E, Fleet JL, Garg AX. Validity of the International Classification of Diseases, Tenth Revision code for acute kidney injury in elderly patients at presentation to the emergency department and at hospital admission. *BMJ Open*. 2012 Nov 29;2(6)

Sonia Thomas, BSc, MSc

Research Coordinator, Knowledge Translation Program, St. Michael's Hospital
Sept 2011 – Dec 2013, MSc Epidemiology & Biostatistics, Western University
2007 – 2011, Research Assistant, Living Kidney Donor Studies



Scholarships, Grants, Awards and Podium Presentations

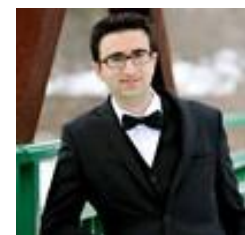
1. Investigator: Long-term risks of kidney stones requiring intervention and bleeding requiring hospitalization in living kidney donors, Kidney Foundation of Canada, Biomedical Research Grant, 2013-2014, \$49,112
2. Award: 3rd Annual Health Innovation Challenge 2012 winner, Health Policy category: Organ Donor Reimbursement and Job-Protection Policy, Health Council of Canada, \$1,000
3. Scholarship: Western Graduate Research Scholarship, 2011-2013, \$14,000

Publications

1. Li AH, **Thomas SM**, Farag A, Duffett M, Garg AX, Naylor KL. Quality of survey reporting in nephrology journals: a methodologic review. Clin J Am Soc Nephrol. 2014;9(12):2089-2094.
2. **Thomas SM**, Lam NN, Huang A, Nash DM, Prasad GV, Knoll GA, Koval JJ, Lentine KL, Kim SJ, Alam A, Lok CE, Treleavan DJ, Garg AX. Risk of serious gastrointestinal bleeding in living kidney donors. Clin Transplant, 2014 May; 28(5): 530-539.
3. Al-Jaishi AA, Oliver MJ, **Thomas SM**, Lok CE, Zhang JC, Garg AX, Kosa SD, Quinn RR, Moist LM. Patency rates of the arteriovenous fistula for hemodialysis: A systematic review and meta-analysis. Am J Kidney Dis, 2014 Mar; 63(3): 464-478.
4. **Thomas SM**, Lam NN, Welk BK, Ngan C, Huang A, Nash DM, Prasad GVR, Knoll GA, Koval JJ, Lentine KL, Kim SJ, Lok CE, Garg AX. Risk of kidney stones with surgical intervention in living kidney donors. Am J Transplant, 2013 Nov; 13(11): 2935-2944.
5. **Thomas SM**, Lentine KL, Garg AX. Editorial: Preparing potential living kidney donors for what they will emotionally experience. Am J Kidney Dis, 2012 Jul; 60 (1):1-2
6. Garg AX, Pouget J, Young A, Huang A, Boudville N, Hodsman A, Adachi JD, Leslie WD, Cadarette SM, Lok CE, Monroy-Cuadros M, Prasad GVR, **Thomas SM**, Naylor K, Treleavan D. Fracture Risk in Living Kidney Donation. Am J Kidney Dis, 2012; 59(6): 770-776
7. Garg AX, Meirambayeva A, Huang A, Kim J, Prasad GVR, Knoll G, Boudville N, Lok C, McFarlane P, Karpinski M, Storsley L, Klarenbach S, Lam N, **Thomas SM**, Dipchand C, Reese P, Doshi M, Gibney E, Taub K, and Young A. Cardiovascular disease risk in living kidney donors. BMJ 2012;344: e1203

Ahmed Al-Jaishi, BSc-MScI, MSc

2016 – Present, PhD, McMaster University
Sept 2011 – Jul 2013, MSc Epidemiology & Biostatistics, Western University
April 2011- Sept 2012, Research Assistant, Hemodialysis Vascular Studies



Scholarships, Grants, Awards and Podium Presentations

1. Podium Presentation: An Automated method to correct for residual confounding due to poor data quality. Health Sciences Research Plenary, 2019
2. Award: Faculty of Health Sciences Research Plenary 2019 - Excellence in Oral Presentation Award, McMaster University, Hamilton, Ontario, 2019
3. Podium Presentation: How common problems with quality of healthcare data can produce false discoveries. Health Research Methods, Evidence, and Impact Research Day, 2018
4. Investigator: Grant. An Integrated Platform for Innovative Pragmatic Cluster-Randomized Registry Trials in Hemodialysis. Canadian Institutes of Health Research, 2017-2020, \$2,970,675
5. Podium Presentation: Administrative data: Transitions of care and Ontario Drug Benefit plant. Meeting for HIP fracture Accelerated surgical Treatment And Care track (HIP ATTACK) Trial, 2017
6. Scholarship: McMaster Graduate Scholarship, 2016-2020, \$16,000
7. Award: Doctoral Training. Canadian Institutes of Health Research (CIHR), 2016-2020 105,000

8. Award: McMaster Tuition Award, 2016,2020, \$28,400
9. Scholarship: Michael G. DeGroot Doctoral Scholarship of Excellence, 2016-2020, \$40,000
10. Investigator: Grant. Major cardiovascular outcomes with personalized dialysate temperature (MY TEMP): A registry-based cluster randomized controlled trial. Heart and Stroke Foundation of Canada, 2016-2019, \$256,440
11. Award: Allied Health Doctoral Fellowship - Methodological considerations for conducting registry-based cluster-randomized controlled trials in hemodialysis, 2016-2018, \$45,833
12. Scholarship: Ontario Graduate Scholarship. 2016-2017, \$15,000
13. Podium Presentation: Data Impact Challenge I: Repeated Diagnostic Imaging. Infoway's Benefit Evaluation Collaboration Network, Canada, 2016
14. Investigator: Hip fracture accelerated surgical treatment and care track (HIP ATTACK) – Randomized Controlled Trial of Accelerated Medical Clearance and Surgery versus Standard Care for Hip Fracture. Ontario SPOR Support Unit, 2015-2019, \$1,890,000
15. Investigator: Cardiovascular and other patient-important outcomes with lower dialysate temperature (COLD TEMP): A registry-based cluster randomized controlled trial. Ontario SPOR Support Unit, 2015-2019, \$260,000
16. Podium Presentation: Major cardiovascular and other patient important outcomes with personalized dialysate TEMPerature (MY TEMP): A registry-based cluster randomized controlled trial. ICES-Wide Fall Forum (Rapid Fire Presentations), 2015
17. Award: Canada-Wide Data Impact Challenge - Rate of repeat diagnostic imaging tests within a ninety-day period, 2015, \$20,000
18. Podium Presentation: Introduction to using administrative data. Meeting for HIP fracture Accelerated surgical Treatment And Care track (HIP ATTACK) Trial, Toronto, Canada, 2015
19. Investigator: Cardiovascular and other patient-important outcomes with lower dialysate temperature (COLD TEMP): A registry-based cluster randomized controlled trial. Ontario SPOR Support Unit, 2014-2015, \$20,000
20. Podium Presentation: Fistula Use in Transition Populations, Canadian Society of Nephrology: Annual General Meeting, 2014
21. Podium Presentation: Fistula use for patients starting hemodialysis after transplant or peritoneal dialysis Failure. Canadian Society of Nephrology: Annual General Meeting (Podium Presentation), Vancouver, Canada, 2014
22. Podium Presentation: Optimal Hemodialysis Vascular Access in the Elderly Patient (Online Presentation). International Society of Nephrology, 2014
23. Podium Presentation: Registry-based cluster randomized trials in the hemodialysis population. Renal Research Day, 2014
24. Podium Presentation: Patency and complications of arteriovenous fistulas: A systematic review. London Health Research Day, 2012
25. Scholarship: Schulich Graduate Scholarship, 2011-2013, \$17,000

Publications

1. **Al-Jaishi AA**, Dixon SN, McArthur E, Devereaux PJ, Thabane L, Garg AX. Simple compared to covariate-constrained randomization methods in balancing baseline characteristics: a case study of randomly allocating 72 hemodialysis centers in a cluster trial. *Trials*. 2021 Sep 15;22(1):626. doi: 10.1186/s13063-021-05590-1.
2. Dixon SN, Sontrop JM, **Al-Jaishi A**, Killin L, McIntyre CW, Anderson S, Bagga A, Benjamin D, Blake P, Devereaux PJ, Iliescu E, Jain A, Lok CE, Nesrallah G, Oliver MJ, Pandeya S, Sood MM, Tam P, Wald R, Walsh M, Zwarenstein M, Garg AX. MyTEMP: Statistical Analysis Plan of a Registry-Based, Cluster-Randomized Clinical Trial. *Can J Kidney Health Dis*. 2021 Aug 27;8:20543581211041182.
3. Nicholls SG, Carroll K, Weijer C, Goldstein CE, Brehaut J, Sood MM, **Al-Jaishi A**, Basile E, Grimshaw JM, Garg AX, Taljaard M. Ethical Issues in the Design and Conduct of Pragmatic Cluster Randomized Trials in Hemodialysis Care: An Interview Study With Key Stakeholders. *Can J Kidney Health Dis*. 2020 Oct 26;7:2054358120964119. doi: 10.1177/2054358120964119. eCollection 2020
4. Varghese A, Lacson E Jr, Sontrop JM, Acedillo RR, **Al-Jaishi AA**, Anderson S, Bagga A, Bain KL, Bennett LL, Bohm C, Brown PA, Chan CT, Cote B, Dev V, Field B, Harris C, Kalatharan S, Kiai M, Molnar AO, Oliver MJ, Parmar MS, Schorr M, Shah N, Silver SA, Smith DM, Sood MM, St Louis I, Tennankore KK, Thompson S, Tonelli M, Vorster H, Waldvogel B, Zacharias J, Garg AX; Dialysate Magnesium (Dial-Mag) Investigators. A Higher Concentration of Dialysate Magnesium to Reduce the

Frequency of Muscle Cramps: A Narrative Review. Can J Kidney Health Dis. 2020 Oct 22;7:2054358120964078. doi: 10.1177/2054358120964078. eCollection 2020.

5. **Al-Jaishi AA**, Carroll K, Goldstein CE, Dixon SN, Garg AX, Nicholls SG, Grimshaw JM, Weijer C, Brehaut J, Thabane L, Devereaux PJ, Taljaard M. Reporting of key methodological and ethical aspects of cluster trials in hemodialysis require improvement: a systematic review. *Trials*. 2020 Aug 28;21(1):752. doi: 10.1186/s13063-020-04657-9.
6. **Al-Jaishi AA**, McIntyre CW, Sontrop JM, Dixon SN, Anderson S, Bagga A, Benjamin D, Berry D, Blake PG, Chambers L, Chan PCK, Delbrouck N, Devereaux PJ, Ferreira-Divino LF, Goluch R, Gregor L, Grimshaw JM, Hanson G, Iliescu E, Jain AK, Lok CE, Mustafa RA, Nathoo B, Nesrallah GE, Oliver MJ, Pandeya S, Parmar MS, Perkins D, Presseau J, Rabin E, Sasal J, Shulman T, Sood MM, Steele A, Tam P, Tascona D, Wadehra D, Wald R, Walsh M, Watson P, Wodchis W, Zager P, Zwarenstein M, Garg AX. Major Outcomes With Personalized Dialysate TEMPerature (MyTEMP): Rationale and Design of a Pragmatic, Registry-Based, Cluster Randomized Controlled Trial. *Can J Kidney Health Dis*. 2020 Feb 5;7:2054358119887988.
7. Goldstein CE, Weijer C, Taljaard M, **Al-Jaishi AA**, Basile E, Brehaut J, Cook CL, Grimshaw JM, Lacson E Jr, Lindsay C, Jardine M, Dember LM, Garg AX. Ethical Issues in Pragmatic Cluster-Randomized Trials in Dialysis Facilities. *Am J Kidney Dis*. 2019 Nov;74(5):659-666. .
8. **Al-Jaishi AA**, Moist LM, Oliver MJ, Nash DM, Fleet JL, Garg AX, Lok CE. Validity of administrative database code algorithms to identify vascular access placement, surgical revisions, and secondary patency. *J Vasc Access*. 2018 Nov;19(6):561-568.
9. Li AH, **Al-Jaishi AA**, Weir M, Lam NN, Maclean J, Dhanani S, Kim SJ, Knoll G, Garg AX. Familial Consent for Deceased Organ Donation Among Immigrants and Long-term Residents in Ontario, Canada: A Population-Based Retrospective Cohort Study. *Can J Kidney Health Dis*. 2017 Oct 20;4:2054358117735564.
10. Presseau J, Mutsaers B, **Al-Jaishi AA**, Squires J, McIntyre CW, Garg AX, Sood MM, Grimshaw JM; Major outcomes with personalized dialysate TEMPerature (MyTEMP) investigators. Barriers and facilitators to healthcare professional behaviour change in clinical trials using the Theoretical Domains Framework: a case study of a trial of individualized temperature-reduced haemodialysis. *Trials*. 2017 May 22;18(1):227.
11. Gandhi S, Shariff SZ, **Al-Jaishi A**, Reiss JP, Mamdani MM, Hackam DG, Li L, McArthur E, Weir MA, Garg AX. Second-Generation Antidepressants and Hyponatremia Risk: A Population-Based Cohort Study of Older Adults. *Am J Kidney Dis*. 2017 Jan;69(1):87-96.
12. **Al-Jaishi AA**, Jain AK, Garg AX, Zhang JC, Moist LM. Hemodialysis Vascular Access Creation in Patients Switching From Peritoneal Dialysis to Hemodialysis: A Population-Based Retrospective Cohort. *Am J Kidney Dis*. 2016 May;67(5):813-6.
13. Mustafa RA, Bdair F, Akl EA, Garg AX, Thiessen-Philbrook H, Salameh H, Kisa S, Nesrallah G, **Al-Jaishi A**, Patel P, Patel P, Mustafa AA, Schünemann HJ. Effect of Lowering the Dialysate Temperature in Chronic Hemodialysis: A Systematic Review and Meta-Analysis. *Clin J Am Soc Nephrol*. 2016 Mar 7;11(3):442-57.
14. Zhang JC, **Al-Jaishi A**, Perl J, Garg AX, Moist LM. Hemodialysis Arteriovenous Vascular Access Creation After Kidney Transplant Failure. *Am J Kidney Dis*. 2015 Oct;66(4):646-54.
15. **Al-Jaishi AA**, Lok CE, Garg AX, Zhang JC, Moist LM. Vascular access creation before hemodialysis initiation and use: a population-based cohort study. *Clin J Am Soc Nephrol*. 2015 Mar 6;10(3):418-27.
16. Sontrop JM, **Al-Jaishi AA**, Garg AX. GFR decline as an alternative end point in clinical trials to prevent ESRD: are we increasing treatment uncertainty for the sake of feasibility? *Am J Kidney Dis*. 2014 Dec;64(6):841-4.
17. **Al-Jaishi AA**, Oliver MJ, Thomas SM, Lok CE, Zhang JC, Garg AX, Kosa SD, Quinn RR, Moist LM. Patency rates of the arteriovenous fistula for hemodialysis: a systematic review and meta-analysis. *Am J Kidney Dis*. 2014 Mar;63(3):464-78.

Kyla Naylor, PhD, BHK, MES

2020 – Present, Adjunct Research Professor, Western University

2018 – Present, Epidemiologist at ICES KDT

2015 – 2018 Postdoctoral Fellow, ICES KDT, Dalla Lana School of Public Health, Toronto

2011 – 2015, PhD Epidemiology & Biostatistics, Western University

Scholarships, Grants, Awards and Podium Presentations

1. Investigator: Hospital Donation Physicians: Building an Evaluation Framework, Canadian Institute of Health Research, 2014, \$9,730.
2. Fellowship: Canadian Institutes of Health Research, CIHR Fellowship 2015-2018, \$135,000.
3. Fellowship: Canadian Institute of Health Research Allied Health Professional Fellowship, 2014-2015. 45,000



4. Award: Canadian National Transplant Research Program Academic Training Program, 2014-2015, \$500
5. Scholarship: Ministry of Training, Colleges and Universities, Ontario Graduate School, 2014-2015 (declined)
6. Fellowship: Osteoporosis Canada-Canadian Multicentre Osteoporosis Study Fellowship Award , 2013-2014, \$20,000
7. Scholarship: Ministry of Training, Colleges and Universities, Ontario Graduate School, 2013-2014, (declined)
8. Award: American Society of Bone Mineral Research Young Investigator Award for top ranking abstract, 2013, \$1000
9. Award: American Society of Bone Mineral Research Young Investigator Award for PhD Training, 2013, \$2000
10. Award: Osteoporosis Canada's Tim Murray Short-Term Training Award, 2013, \$1500
11. Award: Canadian Institute of Health Research Travel Award, 2013, \$1000
12. Investigator: Reduced kidney function and fragility fractures, Canadian Institutes of Health Research, Operating grant: CIB Clinical Investigation – B (Arthritis, Bone, Skin and Cartilage), 2011-2013, \$99,624

Publications

1. Molnar AO, Bota SE, Garg AX, Ouédraogo A, Dixon SN, **Naylor K**, Oliver M, Sood MM. Dialysis Modality and Mortality in Heart Failure: A Retrospective Study of Incident Dialysis Patients. *Cardiorenal Med.* 2020;10(6):452-461. doi: 10.1159/000511168. Epub 2020 Nov 25.
2. **Naylor KL**, Kim SJ, McArthur E, Garg AX, McCallum MK, Knoll GA. Mortality in Incident Maintenance Dialysis Patients Versus Incident Solid Organ Cancer Patients: A Population-Based Cohort. *Am J Kidney Dis.* 2019 Jun;73(6):765-776.
3. Lam NN, Lentine KL, Klarenbach S, Sood MM, Kuwornu PJ, **Naylor KL**, Knoll GA, Kim SJ, Young A, Garg AX. Validation of Living Donor Nephrectomy Codes. *Can J Kidney Health Dis.* 2018 Apr 9;5:2054358118760833.
4. Li AH, Lam NN, **Naylor KL**, Garg AX, Knoll GA, Kim SJ. Early Hospital Readmissions After Transplantation: Burden, Causes, and Consequences. *Transplantation.* 2016 Apr;100(4):713-8.
5. **Naylor KL**, Garg AX. Bone health in living kidney donors. *Curr Opin Urol.* 2014 Nov;24(6):624-8.
6. **Naylor KL**, Lix LM, Hans D, Garg AX, Rush DN, Hodsman AB, Leslie WD. Trabecular bone score in kidney transplant recipients. *Osteoporos Int.* 2016 Mar;27(3):1115-1121. .
7. **Naylor KL**, Jamal SA, Zou G, McArthur E, Lam NN, Leslie WD, Hodsman AB, Kim SJ, Knoll GA, Fraser LA, Adachi JD, Garg AX. Fracture Incidence in Adult Kidney Transplant Recipients. *Transplantation.* 2016 Jan;100(1):167-75.
8. **Naylor KL**, Knoll GA, Allen B, Li AH, Garg AX, Lam NN, McCallum MK, Kim SJ. Trends in Early Hospital Readmission After Kidney Transplantation, 2002 to 2014: A Population-Based Multicenter Cohort Study. *Transplantation.* 2018 Apr;102(4):e171-e179.
9. Li AH, Thomas SM, Farag A, Duffett M, Garg AX, **Naylor KL**. Quality of survey reporting in nephrology journals: a methodologic review. *Clin J Am Soc Nephrol.* 2014 Dec 5;9(12):2089-94.
10. **Naylor KL**, Li AH, Lam NN, Hodsman AB, Jamal SA, Garg AX. Fracture risk in kidney transplant recipients: a systematic review. *Transplantation.* 2013 Jun 27;95(12):1461-70.
11. Tan VS, Garg AX, McArthur E, Patzer RE, Gander J, Roshanov P, Kim SJ, Knoll GA, Yohanna S, McCallum MK, **Naylor KL**. Predicting 3-Year Survival in Patients Receiving Maintenance Dialysis: An External Validation of iChoose Kidney in Ontario, Canada. *Can J Kidney Health Dis.* 2018 Oct 4;5:2054358118799693.
12. **Naylor KL**, Knoll GA, Shariff SZ, McArthur E, Garg AX, Van Walraven C, Austin PC, McCallum MK, Quinn RR, Tan VS, Kim SJ. Socioeconomic Status and Kidney Transplant Outcomes in a Universal Healthcare System: A Population-based Cohort Study. *Transplantation.* 2019 May;103(5):1024-1035.
13. Tan VS, Garg AX, McArthur E, Lam NN, Sood MM, **Naylor KL**. The 3-Year Incidence of Gout in Elderly Patients with CKD. *Clin J Am Soc Nephrol.* 2017 Apr 3;12(4):577-584.
14. **Naylor KL**, Zou G, Leslie WD, Hodsman AB, Lam NN, McArthur E, Fraser LA, Knoll GA, Adachi JD, Kim SJ, Garg AX. Risk factors for fracture in adult kidney transplant recipients. *World J Transplant.* 2016 Jun 24;6(2):370-9.
15. **Naylor KL**, McKenzie S, Cherry C, McArthur E, Li AH, McCallum MK, Kim SJ, Prakash V, Knoll GA, Garg AX. Evaluation of a Hockey Deceased Organ Donation Awareness Campaign: A Population-Based Cohort Study. *Can J Kidney Health Dis.* 2017 Jul 5;4:2054358117717252.
16. **Naylor KL**, Dixon SN, Garg AX, Kim SJ, Blake PG, Nesrallah GE, McCallum MK, D'Antonio C, Li AH, Knoll GA. Variation in Access to Kidney Transplantation Across Renal Programs in Ontario, Canada. *Am J Transplant.* 2017 Jun;17(6):1585-1593.

17. Fraser LA, Liu K, **Naylor KL**, Hwang YJ, Dixon SN, Shariff SZ, Garg AX. Falls and fractures with atypical antipsychotic medication use: a population-based cohort study. *JAMA Intern Med.* 2015 Mar;175(3):450-2.
18. Sood MM, Garg AX, Bota SE, Marisiddappa L, McArthur E, **Naylor KL**, Kapral MK, Kim SJ, Lam NN, Molnar AO, Harel Z, Perl J, Knoll GA. Risk of major hemorrhage after kidney transplantation. *Am J Nephrol.* 2015;41(1):73-80.
19. Lam NN, Garg AX, Knoll GA, Kim SJ, Lentine KL, McArthur E, **Naylor KL**, Bota SE, Sood MM. Venous Thromboembolism and the Risk of Death and Graft Loss in Kidney Transplant Recipients. *Am J Nephrol.* 2017;46(4):343-354.
20. **Naylor KL**, Prior J, Garg AX, Berger C, Langsetmo L, Adachi JD, Goltzman D, Kovacs CS, Josse RG, Leslie WD. Trabecular Bone Score and Incident Fragility Fracture Risk in Adults with Reduced Kidney Function. *Clin J Am Soc Nephrol.* 2016 Nov 7;11(11):2032-2040.
21. Lam NN, Kim SJ, Knoll GA, McArthur E, Lentine KL, **Naylor KL**, Li AH, Shariff SZ, Ribic CM, Garg AX. The Risk of Cardiovascular Disease Is Not Increasing Over Time Despite Aging and Higher Comorbidity Burden of Kidney Transplant Recipients. *Transplantation.* 2017 Mar;101(3):588-596.
22. **Naylor KL**, Garg AX, Kim SJ, Knoll GA. Epidemiology of Fracture in Adults from Ontario, Canada, with Chronic Kidney Disease: An Examination of Fracture Burden Using Administrative Health Data. *Healthc Q.* 2016;19(2):6-9.
23. **Naylor KL**, Zou G, Leslie WD, McArthur E, Lam NN, Knoll GA, Kim SJ, Fraser LA, Adachi JD, Hodsman AB, Garg AX. Frequency of bone mineral density testing in adult kidney transplant recipients from Ontario, Canada: a population-based cohort study. *Can J Kidney Health Dis.* 2016 Jan 16;3:2.
24. **Naylor KL**, Garg AX, Zou G, Langsetmo L, Leslie WD, Fraser LA, Adachi JD, Morin S, Goltzman D, Lentine B, Jackson SA, Josse RG, Jamal SA. Comparison of fracture risk prediction among individuals with reduced and normal kidney function. *Clin J Am Soc Nephrol.* 2015 Apr 7;10(4):646-53.
25. **Naylor K**, Leslie WD, Hodsman AB, Rush DN, Garg AX. FRAX predicts fracture risk in kidney transplant recipients. *Transplantation.* 2014 May 15;97(9):940-5.
26. **Naylor KL**, Garg AX, Hodsman AB, Rush DN, Leslie WD. Long-term changes in bone mineral density in kidney transplant recipients. *Transplantation.* 2014 Dec 27;98(12):1279-85.
27. **Naylor KL**, McArthur E, Leslie WD, Fraser LA, Jamal SA, Cadarette SM, Pouget JG, Lok CE, Hodsman AB, Adachi JD, Garg AX. The three-year incidence of fracture in chronic kidney disease. *Kidney Int.* 2014 Oct;86(4):810-8.
28. Li AH, Garg AX, Prakash V, Grimshaw JM, Taljaard M, Mitchell J, Matti D, Linklater S, **Naylor KL**, Dixon S, Faulds C, Bevan R, Getchell L, Knoll G, Kim SJ, Sontrop J, Bjerre LM, Tong A, Presseau J. Promoting deceased organ and tissue donation registration in family physician waiting rooms (RegisterNow-1 trial): study protocol for a pragmatic, stepped-wedge, cluster randomized controlled registry. *Trials.* 2017 Dec 21;18(1):610.
29. Fraser LA, Shariff SZ, McArthur E, **Naylor KL**, Garg AX. Calcium channel blocker-clarithromycin drug interaction did not increase the risk of nonvertebral fracture: a population-based study. *Ann Pharmacother.* 2015 Feb;49(2):185-8.

Danielle Nash, BSc, MSc, PhD

2019 – Present, Post Doctorate

Sept 2013 – November 2018, PhD Health Research Methodology, McMaster University

Aug 2011 – present, Lead Research Coordinator, ICES Kidney, Dialysis and Transplantation Program

Scholarships, Grants, Awards and Podium Presentations:

1. Scholarship: Canadian Institutes for Health Research Post-Doctoral Research Fellowship, 2017-2020, \$135,000
2. Scholarship: Ministry of Training, Colleges and Universities, Ontario Graduate School, 2014-2015 \$15,000
3. Scholarship: CIHR Frederick Banting and Charles Best Canada Graduate Scholarships Doctoral Award (CGS-D). 2015-2018, \$105,000



Publications

1. Kalatharan V, McArthur E, **Nash DM**, Welk B, Sarma S, Garg AX, Pei Y. Diagnostic accuracy of administrative codes for autosomal dominant polycystic kidney disease in clinic patients with cystic kidney disease. *Clin Kidney J.* 2020 Jan 20;14(2):612-616. doi: 10.1093/ckj/sfz184. eCollection 2021 Feb.

2. Harvey AK, Burns KEA, McArthur E, Adhikari NKJ, Li D, Kitchlu A, Meraz-Munõz A, Garg AX, **Nash DM**, Perez-Sanchez A, Beaubien-Souligny W, Bagshaw SM, Friedrich JO, Silver SA, Wald R. Short-and long-term outcomes of sustained low efficiency dialysis vs continuous renal replacement therapy in critically ill patients with acute kidney injury. *J Crit Care*. 2020 Nov 22;62:76-81. doi: 10.1016/j.jcrc.2020.11.003. Online ahead of print.
3. Kalatharan V, Welk B, **Nash DM**, McArthur E, Slater J, Sarma S, Pei Y, Garg AX. Complications in Patients With Autosomal Dominant Polycystic Kidney Disease Undergoing Ureteroscopy: A Cohort Study. *Can J Kidney Health Dis*. 2020 Nov 24;7:2054358120972830. doi: 10.1177/2054358120972830. eCollection 2020
4. Parikh RV, **Nash DM**, Brimble KS, Markle-Reid M, Tan TC, McArthur E, Khoshniat-Rad F, Sood MM, Zheng S, Pravoverov L, Nesrallah GE, Garg AX, Go AS. Kidney Function and Potassium Monitoring After Initiation of Renin-Angiotensin-Aldosterone System Blockade Therapy and Outcomes in 2 North American Populations. *Circ Cardiovasc Qual Outcomes*. 2020 Sep 2:CIRCOUTCOMES119006415. doi: 10.1161/CIRCOUTCOMES.119.006415. Online ahead of print.
5. Kalatharan V, Jandoc R, Grewal G, **Nash DM**, Welk B, Sarma S, Pei Y, Garg AX. Efficacy and Safety of Surgical Kidney Stone Interventions in Autosomal Dominant Polycystic Kidney Disease: A Systematic Review. *Can J Kidney Health Dis*. 2020 Jul 22;7:2054358120940433.
6. Brimble KS, Boll P, Grill AK, Molnar A, **Nash DM**, Garg A, Akbari A, Blake PG, Perkins D. Impact of the KidneyWise toolkit on chronic kidney disease referral practices in Ontario primary care: a prospective evaluation. *BMJ Open*. 2020 Feb 16;10(2):e032838.
7. **Nash DM**, Dirk JS, McArthur E, Green ME, Shah BR, Walker JD, Beaucage M, Jones CR, Garg AX. Kidney disease and care among First Nations people with diabetes in Ontario: a population-based cohort study. *Kidney disease and care among First Nations people with diabetes in Ontario: a population-based cohort study*. *CMAJ Open*. 2019 Dec 10;7(4):E706-E712.
8. Thomas A, Silver SA, Perl J, Freeman M, Slater JJ, **Nash DM**, Vinegar M, McArthur E, Garg AX, Harel Z, Chanchlani R, Zappitelli M, Iliescu E, Kitchlu A, Blum D, Beaubien-Souligny W, Wald R. The Frequency of Routine Blood Sampling and Patient Outcomes Among Maintenance Hemodialysis Recipients. *Am J Kidney Dis*. 2020 Apr;75(4):471-479.
9. Iskander C, McArthur E, **Nash DM**, Gandhi-Banga S, Weir MA, Muanda FT, Garg AX. Identifying Ontario geographic regions to assess adults who present to hospital with laboratory-defined conditions: a descriptive study. *CMAJ Open*. 2019 Oct 22;7(4):E624-E629. Erratum in: *CMAJ Open*. 2020 Feb 24;8(1):E120.
10. Chanchlani R, **Nash DM**, McArthur E, Zappitelli M, Archer V, Kuwornu JP, Garg AX, Greenberg JH, Goldstein SL, Thabane L, Wald R. Secular Trends in Incidence, Modality and Mortality with Dialysis Receiving AKI in Children in Ontario: A Population-Based Cohort Study. *Clin J Am Soc Nephrol*. 2019 Sep 6;14(9):1288-1296. .
11. **Nash DM**, Markle-Reid M, Brimble KS, McArthur E, Roshanov PS, Fink JC, Weir MA, Garg AX. Nonsteroidal anti-inflammatory drug use and risk of acute kidney injury and hyperkalemia in older adults: a population-based study. *Nephrol Dial Transplant*. 2019 Jul 1;34(7):1145-1154.
12. **Nash DM**, Garg AX, Brimble KS, Markle-Reid M. Primary care provider perceptions of enablers and barriers to following guideline-recommended laboratory tests to confirm chronic kidney disease: a qualitative descriptive study. *BMC Fam Pract*. 2018 Dec 10;19(1):192.
13. Kitchlu A, McArthur E, Amir E, Booth CM, Sutradhar R, Majeed H, **Nash DM**, Silver SA, Garg AX, Chan CT, Kim SJ, Wald R. Acute Kidney Injury in Patients Receiving Systemic Treatment for Cancer: A Population-Based Cohort Study. *J Natl Cancer Inst*. 2018 Nov 13.
14. Clemens KK, Ouédraogo A, **Nash DM**, Garg AX, Shariff SZ. The Health and Health Care of Adults With Type 1 And 2 Diabetes Across the Spectrum of Estimated Glomerular Filtration Rates. *Can J Diabetes*. 2019 Mar;43(2):105-114.e4.
15. Chimunda T, Silver SA, Kuwornu JP, Li L, **Nash DM**, Dixon SN, Adhikari NKJ, Acedillo RR, Harel Z, Kitchlu A, Garg AX, Bell CM, Sood MM, Kim JS, Wald R. Hospital case volume and clinical outcomes in critically ill patients with acute kidney injury treated with dialysis. *J Crit Care*. 2018 Dec; 48:276-282.
16. Liu AR, Hildebrand AM, Dixon S, Sontrop JM, Clark WF, Lazo-Langner A, **Nash D**, Garg AX. A matched case-control study to assess the association between non-steroidal anti-inflammatory drug use and thrombotic microangiopathy. *PLoS One*. 2018 Aug 24;13(8):e0202801.
17. Perl J, McArthur E, Tan VS, **Nash DM**, Garg AX, Harel Z, Li AH, Sood MM, Ray JG, Wald R. ESRD among Immigrants to Ontario, Canada: A Population-Based Study. *J Am Soc Nephrol*. 2018 Jul;29(7):1948-1959.

18. Zhu JXG, **Nash DM**, McArthur E, Farag A, Garg AX, Jain AK. Nephrology comanagement and the quality of antibiotic prescribing in primary care for patients with chronic kidney disease: a retrospective cross-sectional study. *Nephrol Dial Transplant*. 2019 Apr 1;34(4):642-649.
19. Al-Jaishi AA, Moist LM, Oliver MJ, **Nash DM**, Fleet JL, Garg AX, Lok CE. Validity of administrative database code algorithms to identify vascular access placement, surgical revisions, and secondary patency. *J Vasc Access*. 2018 Nov;19(6):561-568.
20. Silver SA, Harel Z, McArthur E, **Nash DM**, Acedillo R, Kitchlu A, Garg AX, Chertow GM, Bell CM, Wald R. Causes of Death after a Hospitalization with AKI. *J Am Soc Nephrol*. 2018 Mar;29(3):1001-1010.
21. Tan VS, **Nash DM**, McArthur E, Jain AK, Garg AX, Juurlink DN, Weir MA. Impact of Injectable Furosemide Hospital Shortage on Congestive Heart Failure Outcomes: A Time Series Analysis. *Can J Cardiol*. 2017 Nov;33(11):1498-1504.
22. Kalatharan V, Pei Y, Clemens KK, McTavish RK, Dixon SN, Rochon M, **Nash DM**, Jain A, Sarma S, Zaleski A, Lum A, Garg AX. Positive Predictive Values of International Classification of Diseases, 10th Revision Coding Algorithms to Identify Patients With Autosomal Dominant Polycystic Kidney Disease. *Can J Kidney Health Dis*. 2016 Dec 14;3:2054358116679130.
23. Acedillo RR, Wald R, McArthur E, **Nash DM**, Silver SA, James MT, Schull MJ, Siew ED, Matheny ME, House AA, Garg AX. Characteristics and Outcomes of Patients Discharged Home from an Emergency Department with AKI. *Clin J Am Soc Nephrol*. 2017 Jul 20. pii: CJN.10431016.
24. **Nash DM**, Brimble S, Markle-Reid M, McArthur E, Tu K, Nesrallah GE, Grill A, Garg AX. Quality of Care for Patients With Chronic Kidney Disease in the Primary Care Setting: A Retrospective Cohort Study From Ontario, Canada. *Can J Kidney Health Dis*. 2017 May 23;4:2054358117703059.
25. **Nash DM**, Ivers NM, Young J, Jaakkimainen RL, Garg AX, Tu K. Improving Care for Patients With or at Risk for Chronic Kidney Disease Using Electronic Medical Record Interventions: A Pragmatic Cluster-Randomized Trial Protocol. *Can J Kidney Health Dis*. 2017 Apr 5;4:2054358117699833.
26. Hayward JS, McArthur E, **Nash DM**, Sontrop JM, Russell SJ, Khan S, Walker JD, Nesrallah GE, Sood MM, Garg AX. Kidney Disease Among Registered Métis Citizens of Ontario: A Population-Based Cohort Study. *Can J Kidney Health Dis*. 2017 Apr 11;4:2054358117703071.
27. Perl J, McArthur E, Bell C, Garg AX, Bargman JM, Chan CT, Harel S, Li L, Jain AK, **Nash DM**, Harel Z. Dialysis Modality and Readmission Following Hospital Discharge: A Population-Based Cohort Study. *Am J Kidney Dis*. 2017 Jul;70(1):11-20.
28. Wong G, Hayward JS, McArthur E, Craig JC, **Nash DM**, Dixon SN, Zimmerman D, Kitchlu A, Garg AX. Patterns and Predictors of Screening for Breast and Cervical Cancer in Women with CKD. *Clin J Am Soc Nephrol*. 2017 Jan 6;12(1):95-104.
29. Silver SA, Harel Z, McArthur E, **Nash DM**, Acedillo R, Kitchlu A, Garg AX, Chertow GM, Bell CM, Wald R. 30-Day Readmissions After an Acute Kidney Injury Hospitalization. *Am J Med*. 2017 Feb;130(2):163-172.e4.
30. Qirjazi E, McArthur E, **Nash DM**, Dixon SN, Weir MA, Vasudev A, Jandoc R, Gula LJ, Oliver MJ, Wald R, Garg AX. Risk of Ventricular Arrhythmia with Citalopram and Escitalopram: A Population-Based Study. *PLoS One*. 2016 Aug 11;11(8):e0160768.
31. Trac MH, McArthur E, Jandoc R, Dixon SN, **Nash DM**, Hackam DG, Garg AX. Macrolide antibiotics and the risk of ventricular arrhythmia in older adults. *CMAJ*. 2016 Apr 19;188(7):E120-E129.
32. Harel Z, Wald R, McArthur E, Chertow GM, Harel S, Gruneir A, Fischer HD, Garg AX, Perl J, **Nash DM**, Silver S, Bell CM. Rehospitalizations and Emergency Department Visits after Hospital Discharge in Patients Receiving Maintenance Hemodialysis. *J Am Soc Nephrol*. 2015 Dec;26(12):3141-50.
33. **Nash DM**, Mustafa RA, McArthur E, Wijeyesundera DN, Paterson JM, Sharan S, Vinden C, Wald R, Welk B, Sessler DI, Devereaux PJ, Walsh M, Garg AX. Combined general and neuraxial anesthesia versus general anesthesia: a population-based cohort study. *Can J Anaesth*. 2015 Apr;62(4):356-68.
34. Wald R, McArthur E, Adhikari NK, Bagshaw SM, Burns KE, Garg AX, Harel Z, Kitchlu A, Mazer CD, **Nash DM**, Scales DC, Silver SA, Ray JG, Friedrich JO. Changing incidence and outcomes following dialysis-requiring acute kidney injury among critically ill adults: a population-based cohort study. *Am J Kidney Dis*. 2015 Jun;65(6):870-7.

35. Hwang YJ, Dixon SN, Reiss JP, Wald R, Parikh CR, Gandhi S, Shariff SZ, Pannu N, **Nash DM**, Rehman F, Garg AX. Atypical antipsychotic drugs and the risk for acute kidney injury and other adverse outcomes in older adults: a population-based cohort study. *Ann Intern Med*. 2014 Aug 19;161(4):242-8.
36. Iansavichus AV, Hildebrand AM, Haynes RB, Wilczynski NL, Levin A, Hemmelgarn BR, Tu K, Nesrallah GE, **Nash DM**, Garg AX. High-performance information search filters for CKD content in PubMed, Ovid MEDLINE, and EMBASE. *Am J Kidney Dis*. 2015 Jan;65(1):26-32.
37. Thomas SM, Lam NN, Huang A, **Nash DM**, Prasad GV, Knoll GA, Koval JJ, Lentine KL, Kim SJ, Alam A, Lok CE, Treleaven DJ, Garg AX; Donor Nephrectomy Outcomes Research (DONOR) Network. Risk of serious gastrointestinal bleeding in living kidney donors. *Clin Transplant*. 2014 May;28(5):530-9.
38. Vinden C, **Nash DM**, Rangrej J, Shariff SZ, Dixon SN, Jain AK, Garg AX. Complications of daytime elective laparoscopic cholecystectomies performed by surgeons who operated the night before. *JAMA*. 2013 Nov 6;310(17):1837-41.
39. Fleet JL, Shariff SZ, Bailey DG, Gandhi S, Juurlink DN, **Nash DM**, Mamdani M, Gomes T, Patel AM, Garg AX. Comparing two types of macrolide antibiotics for the purpose of assessing population-based drug interactions. *BMJ Open*. 2013 Jul 11;3(7). pii: e002857.
40. Fleet JL, Dixon SN, Shariff SZ, Quinn RR, **Nash DM**, Harel Z, Garg AX. Detecting chronic kidney disease in population-based administrative databases using an algorithm of hospital encounter and physician claim codes. *BMC Nephrol*. 2013 Apr 5;14:81.

Mai Trac, BMSc, MSc

2019 – Project Manager, Eric St. Clair Local Health Integration Network
 Jan 2014, Grant Development Officer, Lawson Health Research Institute
 Oct 2011 – Jan 2014, Program Administrator, ICES Kidney, Dialysis & Transplantation Program
 Sept 2011 – present, MSc Epidemiology & Biostatistics, Western University

Scholarships, Grants, Awards and Podium Presentations

1. Scholarship: London Health Sciences Centre Auxiliary Scholarship, 2013-2014, \$3,000

Publication:

1. **Trac MH**, McArthur E, Jandoc R, et al. Macrolide antibiotics and the risk of ventricular arrhythmia in older adults. *CMAJ*. 2016;188(7):E120-E129.



Sarah Bota, BA

Sept 2013 – present, MSc Epidemiology & Biostatistics, Western University

Scholarships, Grants, Awards and Podium Presentations

1. Scholarship: ODPRN Student Training Program, Tissue plasminogen activator therapy for acute ischemic stroke with chronic kidney disease, May 2015 - April 2016, \$17,500

Publications

1. Molnar AO, **Bota SE**, Garg AX, Ouédraogo A, Dixon SN, Naylor K, Oliver M, Sood MM. Dialysis Modality and Mortality in Heart Failure: A Retrospective Study of Incident Dialysis Patients. *Cardiorenal Med*. 2020;10(6):452-461. doi: 10.1159/000511168. Epub 2020 Nov 25.
2. Molnar AO, **Bota S**, Jeyakumar N, McArthur E, Battistella M, Garg AX, Sood MM, Brimble KS. Potentially inappropriate prescribing in older adults with advanced chronic kidney disease. *PLoS One*. 2020 Aug 20;15(8):e0237868. doi: 10.1371/journal.pone.0237868. eCollection 2020.
3. Ashley J, McArthur E, **Bota S**, Harel Z, Battistella M, Molnar AO, Jun M, Badve SV, Garg AX, Manuel D, Tanuseputro P, Wells P, Mavrakas T, Rhodes E, Sood MM. Risk of Cardiovascular Events and Mortality Among Elderly Patients With Reduced



GFR Receiving Direct Oral Anticoagulants [published online ahead of print, 2020 Apr 22]. Am J Kidney Dis. 2020;S0272-6386(20)30639-9.

4. Silver SA, **Bota SE**, McArthur E, Clemens KK, Harel Z, Naylor KL, Sood MM, Garg AX, Wald R. Association of Primary Care Involvement with Death or Hospitalizations for Patients Starting Dialysis. Clin J Am Soc Nephrol. 2020;15(4):521-529.
5. Noel JA, **Bota SE**, Petrcich W, Garg AX, Carrero JJ, Harel Z, Tangri N, Clark EG, Komenda P, Sood MM. Risk of Hospitalization for Serious Adverse Gastrointestinal Events Associated With Sodium Polystyrene Sulfonate Use in Patients of Advanced Age [published online ahead of print, 2019 Jun 10] [published correction appears in JAMA Intern Med. 2020 Feb 24;:]. JAMA Intern Med. 2019;179(8):1025-1033.
6. McArthur E, **Bota SE**, Sood MM, Nesrallah GE, Kim SJ, Garg AX, Dixon SN. Comparing Five Comorbidity Indices to Predict Mortality in Chronic Kidney Disease: A Retrospective Cohort Study. Can J Kidney Health Dis. 2018;5:2054358118805418. Published 2018 Oct 15.
7. Nesrallah GE, Dixon SN, MacKinnon M, Jassal SV, **Bota SE**, Dirk JS, Arthurs E, Blake PG, Sood MM, Garg AX, Davison SN.. Home Palliative Service Utilization and Care Trajectory Among Ontario Residents Dying on Chronic Dialysis. Can J Kidney Health Dis. 2018;5:2054358118783761. Published 2018 Jul 24.
8. Lam NN, Garg AX, Knoll GA, Kim SJ, Lentine KL, McArthur E, Naylor KL, **Bota SE**, Sood MM. Venous Thromboembolism and the Risk of Death and Graft Loss in Kidney Transplant Recipients. Am J Nephrol. 2017;46(4):343-354.
9. Molnar AO, **Bota SE**, McArthur E, Lam NN, Garg AX, Wald R, Zimmerman D, Sood MM. Risk and complications of venous thromboembolism in dialysis patients. Nephrol Dial Transplant. 2018;33(5):874-880.
10. Massicotte-Azarniouch D, Bader Eddeen A, Lazo-Langner A, Molnar AO, Lam NN, McCullum MK, **Bota S**, Zimmerman D, Garg AX, Harel Z, Perl J, Wald R, Sood MM. Risk of Venous Thromboembolism in Patients by Albuminuria and Estimated GFR [published correction appears in Am J Kidney Dis. 2018 Oct;72(4):623]. Am J Kidney Dis. 2017;70(6):826-833.
11. Keskar V, McArthur E, Wald R, Harel Z, Zimmerman D, Molnar A, Garg AX, Lam N, McCallum MK, **Bota SE**, Perl J, Sood MM. The Authors Reply. Kidney Int. 2017;92(3):767.
12. Keskar V, McArthur E, Wald R, Harel Z, Zimmerman D, Molnar AO, Garg AX, Lam NN, McCallum MK, **Bota SE**, Perl J, Sood MM. The association of anticoagulation, ischemic stroke, and hemorrhage in elderly adults with chronic kidney disease and atrial fibrillation. Kidney Int. 2017;91(4):928-936.
13. Sood MM, Garg AX, **Bota SE**, Marisiddappa L, McArthur E, Naylor K, Kapral MK, Kim SJ, Lam N, Molnar A, Harel Z, Perl J, Knoll G. Risk of major hemorrhage after kidney transplantation. Am J Nephrol. 2015; 41(1): 73-70.
14. Sood MM, **Bota SE**, McArthur E, Kapral MK, Tangri N, Knoll G, Zimmerman D & Garg A. The three-year incidence of major hemorrhage among older adults initiating chronic dialysis. Can J Kid Health Dis. 2014; 1:21

Vinusha Kalatharan, BMSc

Sept 2013 – present, PhD Epidemiology & Biostatistics, Western University

Scholarships, Grants, Awards and Podium Presentation

1. Podium Presentation: Polycystic Kidney Disease Without Apparent Family History, American Society of Nephrology Renal Week, 2013
2. Scholarship: Ministry of Training, Colleges and Universities, Ontario Graduate School, 2013-2014, \$15,000
3. Scholarship: Ministry of Training, Colleges and Universities, Ontario Graduate Scholarship, 2015-2016, \$15,000
4. Travel Award: Canadian Institute for Health Research Travel Award, 2016, \$1,500
5. Scholarship: Ministry of Training, Colleges and Universities, Ontario Graduate Scholarship, 2016-2017, \$15,000
6. Scholarship: Ministry of Training, Colleges and Universities, Ontario Graduate Scholarship, 2016-2017, \$15,000 (declined offer)



7. Scholarship: Kidney Foundation of Canada Allied Health Doctoral Scholarship, 2017-2018, \$31,000 (declined offer)
8. Scholarship: Kidney Research Scientist Core Education and National Training. 2017-2020, \$8,000
9. Scholarship: Canadian Institute of Health Research Doctoral Scholarship, 2017-2020, \$105,000
10. Investigator: Disease-related complications and health care utilization in ADPKD, Canadian Institutes of Health Research, Project Scheme Grant, 2017-2022, \$832,320

Publications

1. **Kalatharan V**, Welk B, Nash DM, Dixon SN, Slater J, Pei Y, Sarma S, Garg AX. Risk of Hospital Encounters With Kidney Stones in Autosomal Dominant Polycystic Kidney Disease: A Cohort Study. *Can J Kidney Health Dis.* 2021 Mar 16;8:20543581211000227
2. **Kalatharan V**, McArthur E, Nash DM, Welk B, Sarma S, Garg AX, Pei Y. Diagnostic accuracy of administrative codes for autosomal dominant polycystic kidney disease in clinic patients with cystic kidney disease. *Clin Kidney J.* 2020 Jan 20;14(2):612-616.
3. **Kalatharan V**, Welk B, Nash DM, McArthur E, Slater J, Sarma S, Pei Y, Garg AX. Complications in Patients With Autosomal Dominant Polycystic Kidney Disease Undergoing Ureteroscopy: A Cohort Study. *Can J Kidney Health Dis.* 2020 Nov 24;7:2054358120972830.
4. **Kalatharan V**, Jandoc R, Grewal G, Nash DM, Welk B, Sarma S, Pei Y, Garg AX. Efficacy and Safety of Surgical Kidney Stone Interventions in Autosomal Dominant Polycystic Kidney Disease: A Systematic Review. *Can J Kidney Health Dis.* 2020 Jul 22;7:2054358120940433.
5. **Kalatharan V**, Jandoc R, Grewal G, Nash DM, Welk B, Sarma S, Pei Y, and Garg AX. Efficacy and safety of surgical kidney stone interventions in autosomal dominant polycystic kidney disease: a systematic review. *Can J Kidney Health Dis.* 2020; 7: 2054358120940433 (accepted for publication).
6. **Kalatharan V**, Grewal G, Nash DM, Welk B, Sarma S, Pei Y, and Garg AX. Stone prevalence in autosomal dominant polycystic kidney disease: a systematic review and meta-analysis. *Can J Kidney Health Dis.* 2020; 7: 2054358120934628.
7. **Kalatharan V**, McArthur E, Nash DM, Welk B, Sarma S, Garg AX, and Pei Y. Diagnostic accuracy of administrative codes for autosomal dominant polycystic kidney disease in clinic patients with cystic kidney disease. *Clinical Kidney Journal.* 2020
8. **Kalatharan V**, Pei Y, Clemens KK, McTavish RK, Dixon SN, Rochon M, Nash DM, Jain A, Sarma S, Zaleski A, Lum A, Garg AX. Positive Predictive Values of International Classification of Diseases, 10th Revision Coding Algorithms to Identify Patients With Autosomal Dominant Polycystic Kidney Disease. *Can J Kidney Health Dis.* 2016;3:2054358116679130. Published 2016 Dec 14.

Sebastian Przech, BMSc, MSc, MD

July 2020 Emergency Medicine Resident, University of British Columbia
 Sept 2016 – June 2020, McGill University, Medical School
 Sept 2014 – October 2017, MSc Epidemiology & Biostatistics, Western University
 2013- 2014, Research Assistant, Living Kidney Donor Studies

Scholarships, Grants, Awards and Podium Presentations

1. Award: Internal Research Fund (IRF) Studentship Award, Lawson Health Research Institute, 2014-2015, \$15,000
2. Scholarship: Ontario Graduate Scholarship, Department of Epidemiology & Biostatistics, Western University, 2015-2016, \$15,000

Publications

1. Barnieh L, Klarenbach S, Arnold J, Cuerden M, Knoll G, Lok C, Sontrop JM, Miller M, Ramesh Prasad GC, **Przech S**, Garg AX. Nonreimbursed Costs Incurred by Living Kidney Donors: A Case Study From Ontario, Canada. *Transplantation.* 2019;103(6):e164-e171.



2. **Przech S**, Garg AX, Arnold JB, Barnieh L, Cuerden MS, Dipchand C, Feldman L, Gill JS, Karpinski M, Knoll G, Lok C, Miller m, Monroy M, Nguan C, Prasad GVR, Sarma S, Sontrop JM, Storsley L, Klarenbach S. Financial Costs Incurred by Living Kidney Donors: A Prospective Cohort Study. *J Am Soc Nephrol*. 2018;29(12):2847-2857.
3. Habbous S, Arnold J, Begen MA, Boudville N, Cooper M, Dipchand C, Dixon SN, Feldman LS, Gozdzik D, Karpinski M, Klarenbach S, Knoll GA, Lam NN, Lentine KL, Lok C, McArthur E, McKenzie S, Miller M, Monroy-Cuadros M, Nguan C, Prasad GVR, **Przech S**, Sarma S, Segev DL, Storsley L, Garg AX.. Duration of Living Kidney Transplant Donor Evaluations: Findings From 2 Multicenter Cohort Studies. *Am J Kidney Dis*. 2018;72(4):483-498.
4. Habbous S, **Przech S**, Martin J, Garg AX, Sarma S. Cost-Effectiveness of First-Line Sevelamer and Lanthanum versus Calcium-Based Binders for Hyperphosphatemia of Chronic Kidney Disease. *Value Health*. 2018;21(3):318-325.
5. Habbous S, **Przech S**, Acedillo R, Sarma S, Garg AX, Martin J. The efficacy and safety of sevelamer and lanthanum versus calcium-containing and iron-based binders in treating hyperphosphatemia in patients with chronic kidney disease: a systematic review and meta-analysis. *Nephrol Dial Transplant*. 2017;32(1):111-125.

Steven Habbous, BSc, MSc, PhD

Team Lead/Methodologist, Cancer Care Ontario

Sept 2014 – Dec2018, PhD Epidemiology & Biostatistics, Western University



Scholarships, Grants, Awards and Podium Presentations

1. Scholarship: Canadian Institutes of Health Research Doctoral Award - Frederick Banting and Charles Best Canada Graduate Scholarship. 2015-2017, \$105,000
2. Scholarship: Dean's Stipend for Graduate Research, Western University 2014-2017, \$100,000

Publications

1. **Habbous S**, Barnieh L, Litchfield K, McKenzie S, Reich M, Lam NN, Mucsi I, Bugeja A, Yohanna S, Mainra R, Chong K, Fantus D, Prasad GVR, Dipchand C, Gill J, Getchell L, Garg AX. A RAND-Modified Delphi on Key Indicators to Measure the Efficiency of Living Kidney Donor Candidate Evaluations. *Clin J Am Soc Nephrol*. 2020 Sep 24;CJN.03780320. doi: 10.2215/CJN.03780320. Online ahead of print.
2. **Habbous S**, Barnieh L, Klarenbach S, Manns B, Sarma S, Begen MA, Litchfield K, Lentine KL, Singh S, Garg AX. Evaluating multiple living kidney donor candidates simultaneously is more cost-effective than sequentially. *Kidney Int*. 2020 Jun 30:S0085-2538(20)30712-2.
3. Yohanna S, Naylor KL, McArthur E, Lam NN, Austin PC, **Habbous S**, McCallum MK, Ordon M, Knoll GA, Kim JS, Garg AX. A Propensity Score-weighted Comparison of Outcomes Between Living and Standard Criteria Deceased Donor Kidney Transplant Recipients. *Transplantation*. 2020 Jun 1.
4. **Habbous S**, Garcia-Ochoa C, Brahm G, Nguan C, Garg AX. Can Split Renal Volume Assessment by Computed Tomography Replace Nuclear Split Renal Function in Living Kidney Donor Evaluations? A Systematic Review and Meta-Analysis. *Can J Kidney Health Dis*. 2019 Sep 19;6:2054358119875459.
5. **Habbous S**, Woo J, Lam NN, Lentine KL, Cooper M, Reich M, Garg AX. The Efficiency of Evaluating Candidates for Living Kidney Donation: A Scoping Review. *Transplant Direct*. 2018 Sep 20;4(10):e394.
6. **Habbous S**, Sarma S, Barnieh LJ, McArthur E, Klarenbach S, Manns B, Begen MA, Lentine KL, Garg AX; Donor Nephrectomy Outcomes Research (DONOR) Network. Healthcare Costs for the Evaluation, Surgery, and Follow-Up Care of Living Kidney Donors. *Transplantation*. 2018 Aug;102(8):1367-1374.
7. **Habbous S**, Sarma S, Barnieh L, McArthur E, Klarenbach S, Manns B, Begen MA, Lentine KL, Garg AX; Donor Nephrectomy Outcomes Research (DONOR) Network. Health care costs for the evaluation, surgery, and follow-up care of living kidney donors. *Transplantation*. 2018 Apr 19.
8. **Habbous S**, Arnold J, Begen MA, Boudville N, Cooper M, Dipchand C, Dixon SN, Feldman LS, Gozdzik D, Karpinski M, Klarenbach S, Knoll GA, Lam NN, Lentine KL, Lok C, McArthur E, McKenzie S, Miller M, Monroy-Cuadros M, Nguan C, Prasad GVR, **Przech S**, Sarma S, Segev DL, Storsley L, Garg AX; Donor Nephrectomy Outcomes Research (DONOR) Network. Duration of Living Kidney Transplant Donor Evaluations: Findings From 2 Multicenter Cohort Studies. *Am J Kidney Dis*. 2018 Oct;72(4):483-498.

9. **Habbous S**, McArthur E, Sarma S, Begen MA, Lam NN, Manns B, Lentine KL, Dipchand C, Litchfield K, McKenzie S, Garg AX; Donor Nephrectomy Outcomes Research (DONOR) Network. Potential implications of a more timely living kidney donor evaluation. *Am J Transplant*. 2018 Nov;18(11):2719-2729.
10. **Habbous S**, Przech S, Martin J, Garg AX, Sarma S. Cost-Effectiveness of First-Line Sevelamer and Lanthanum versus Calcium-Based Binders for Hyperphosphatemia of Chronic Kidney Disease. *Value Health*. 2018 Mar;21(3):318-325.
11. **Habbous S**, McArthur E, Dixon SN, McKenzie S, Garcia-Ochoa C, Lam NN, Lentine KL, Dipchand C, Litchfield K, Begen MA, Sarma S, Garg AX. Initiating Maintenance Dialysis Before Living Kidney Donor Transplantation When a Donor Candidate Evaluation Is Well Underway. *Transplantation*. 2018 Jul;102(7):e345-e353.
12. **Habbous S**, Przech S, Acedillo R, Sarma S, Garg AX, Martin J. The efficacy and safety of sevelamer and lanthanum versus calcium-containing and iron-based binders in treating hyperphosphatemia in patients with chronic kidney disease: a systematic review and meta-analysis. *Nephrol Dial Transplant*. 2017 Jan 1;32(1):111-125.
13. **Habbous S**, Garg AX, Martin J. Appraisal of a redundant report on lanthanum carbonate. *Int Urol Nephrol*. 2016 Jan;48(1):149-50.
14. Garg AX, Nevis IF, McArthur E, Sontrop JM, Koval JJ, Lam NN, Hildebrand AM, Reese PP, Storsley L, Gill JS, Segev DL, **Habbous S**, Bugeja A, Knoll GA, Dipchand C, Monroy-Cuadros M, Lentine KL; DONOR Network. Gestational hypertension and preeclampsia in living kidney donors. *N Engl J Med*. 2015 Jan 8;372(2):124-33.

Aiden (Ran-ke) Liu, BSc, MSc

2018 – Health Economics Specialist, Patient Access, Novo Nordisk Canada Inc
 Sept 2014 – May 2017, MSc Epidemiology & Biostatistics, Western University
 Summer 2014, Research Student

Publications

1. **Liu AR**, Hildebrand AM, Dixon S, Sontrop JM, Clark WF, Lazo-Langner A, Nash D, Garg AX. A matched case-control study to assess the association between non-steroidal anti-inflammatory drug use and thrombotic microangiopathy. *PLoS One*. 2018;13(8):e0202801. Published 2018 Aug 24.
2. Thejeel B, Garg AX, Clark WF, **Liu AR**, Iansavichus AV, Hildebrand AM. Long-term outcomes of thrombotic microangiopathy treated with plasma exchange: A systematic review. *Am J Hematol*. 2016;91(6):623-630.
3. **Liu AR**, Garg AX, Liu K, Shariff SZ, Jain AK, Weir MA. Increased Risk of Adverse Renal Outcome Following Polyethylene Glycol Bowel Preparation Compared to Sodium Picosulfate. *J Clin Pharmacol*. 2016;56(8):983-987.
4. Singh N, Gandhi S, McArthur E, Moist L, Jain AK, **Liu AR**, Sood MM, Garg AX. Kidney function and the use of nitrofurantoin to treat urinary tract infections in older women. *CMAJ*. 2015 Jun 16;187(9):648-56.
5. Al-Jaishi AA, Oliver MJ, **Liu AR**, Garg AX, Zhang JC, Thomas SM, Moist LM. Complication rates of the arteriovenous fistula: a systematic review. *PROSPERO* 2014:CRD42014010444



Rebecca McTavish, BSc, MSc

2019 - Associate Director, Value & Evidence at EVERANA (www.eversana.com) /
 Sept 2014 – August 2016, MSc Epidemiology & Biostatistics, Western University

Scholarships, Grants, Awards and Podium Presentations

1. Award: Inaugural Jim Robertson Award, Western University, 2015-2016
2. Scholarship: Ministry of Training, Colleges and Universities, Ontario Graduate Scholarship, 2015-2016, \$15,000

Publications:

1. **McTavish RK**, Richard L, McArthur E, Shariff SZ, Acedillo R, Parikh CR, Wald R, Wilk P, Garg AX. Association Between High Environmental Heat and Risk of Acute Kidney Injury Among Older Adults in a Northern Climate: A Matched Case-Control Study. *Am J Kidney Dis*. 2018;71(2):200-208.



2. Kalatharan V, Pei Y, Clemens KK, **McTavish RK**, Dixon SN, Rochon M, Nash DM, Jain A, Sarma S, Zaleski A, Lum A, Garg AX. Positive Predictive Values of International Classification of Diseases, 10th Revision Coding Algorithms to Identify Patients With Autosomal Dominant Polycystic Kidney Disease. *Can J Kidney Health Dis.* 2016;3:2054358116679130. Published 2016 Dec 14.

Owen Litwin, BSc, MSc

2017 – Present, Medical School, McGill University

2015-2019, MSc, Epidemiology & Biostatistics, Western University

Scholarships, Grants, Awards and Podium Presentations

1. Scholarship: Ontario Graduate Scholarship, University of Western Ontario, 2015-2016, \$15,000
2. Podium Presentation: Evaluating preventive health screening compliance in physicians and non-physicians in Ontario. Canadian Society for Epidemiology and Biostatistics National Student Conference, Winnipeg, Manitoba, June 2016
3. Scholarship: Canadian Institutes of Health Research (CIHR), Frederick Banting and Charles Best Canada Graduate Scholarships-Master's Award, University of Western Ontario. 2016-2017, \$17,500

Publications:

1. **Litwin O**, Sontrop JM, McArthur E, Timmouth J, Rabeneck L, Vinden C, Sood MM, Baxter NN, Tanuseputro P, Welk B, Garg AX. Uptake of Colorectal Cancer Screening by Physicians Is Associated With Greater Uptake by Their Patients. *Gastroenterology.* 2020;158(4):905-914.



Carina Iskander, BMSc, MSc

2019 – Epidemiologist, ICES Western

2017 – 2019, MSc Epidemiology and Biostatistics, Western University

Scholarships, Grants, Awards and Podium Presentations

1. Podium Presentation: Sodium-glucose cotransporter-2 inhibitor use and the risk of acute kidney injury in older adults in routine clinical practice: a population-based cohort study, Pre-ASN event, 2019
2. Podium Presentation: Identifying Ontario geographic regions to assess adults who present to hospital with laboratory-defined conditions. Canadian Society for Epidemiology and Biostatistics and London Health Research Day, 2019
3. Podium Presentation: SGLT2 inhibitors and the risk of acute kidney injury. Presentation to the Management team for the Ontario Public Drug Programs, 2019
4. Podium Presentation: SGLT2 inhibitors and the risk of acute kidney injury. Ontario Drug Policy Research Network (ODPRN) 2018
5. Scholarship: CIHR Drug Safety and Effectiveness Cross-Disciplinary Training Program Scholarship, 2018-2019, \$10,000
6. Scholarship: Western Graduate Research Scholarship, 2017-2019, \$8,400
7. Podium Presentation: SGLT2 inhibitors and the risk of renal outcomes and other adverse events. Western Epidemiology and Biostatistics Student Rounds, 2017

Publications:

1. Wilson TA, de Koning L, Quinn RR, Zarnke KB, McArthur E, **Iskander C**, Roshanov PS, Garg AX, Hemmelgarn BR, Pannu N, James MT. Derivation and External Validation of a Risk Index for Predicting Acute Kidney Injury Requiring Kidney Replacement Therapy After Noncardiac Surgery. *JAMA Netw Open.* 2021 Aug 2;4(8):e2121901.
2. **Iskander C**, Cherney DZ, Clemens KK, Dixon SN, Harel Z, Jeyakumar N, McArthur E, Muanda FT, Parikh CR, Paterson JM, Tangri N, Udell JA, Wald R, Garg AX. Use of sodium-glucose cotransporter-2 inhibitors and risk of acute kidney injury in older adults with diabetes: a population-based cohort study. *CMAJ.* 2020;192(14):E351-E360.



3. **Iskander C**, McArthur E, Nash DM, Gandhi-Banga S, Weir MA, Muanda FT, Garg AX. Identifying Ontario geographic regions to assess adults who present to hospital with laboratory-defined conditions: a descriptive study [published correction appears in CMAJ Open. 2020 Feb 24;8(1):E120]. CMAJ Open. 2019;7(4):E624-E629. Published 2019 Oct 22.

Flory Muanda-Tsobo, MD, PhD

2019 – Present, Post-doctoral Fellow, ICES Western and Kidney, Transplantation, and Dialysis, Western University

Scholarships, Grants, Awards and Podium Presentations:

1. Fellowship: January 2020 – December 2023, Postdoctoral Fellowship award, MITACS: \$165,000.00
2. Fellowship: June 2019 – May 2023, Postdoctoral Fellowship award, Canadian Institutes of Health Research: 135,000.00



Publications:

1. Bathini L, Garg AX, Sontrop JM, Weir MA, Blake PG, Dixon SN, McArthur E, **Muanda FT**. Initiation Dose of Allopurinol and the Risk of Severe Cutaneous Reactions in Older Adults With CKD: A Population-Based Cohort Study. Am J Kidney Dis. 2022 May 26:S0272-6386(22)00704-1. doi: 10.1053/j.ajkd.2022.04.006. Epub ahead of print.
2. **Muanda FT**, Weir MA, Ahmadi F, Sontrop JM, Cowan A, Fleet JL, Blake PG, Garg AX. Higher-Dose Gabapentinoids and the Risk of Adverse Events in Older Adults With CKD: A Population-Based Cohort Study. Am J Kidney Dis. 2021 Dec 31:S0272-6386(21)01048-9.
3. **Muanda FT**, Weir MA, Ahmadi F, McArthur E, Sontrop JM, Kim RB, Garg AX. Digoxin Dosing and the Risk of Toxicity in Older Adults With CKD. Am J Kidney Dis. 2021 Nov 19:S0272-6386(21)00999-9. doi: 10.1053/j.ajkd.2021.09.024. Online ahead of print.
4. Cowan A, Garg AX, McArthur E, **Muanda Tsobo F**, Weir MA. Cardiovascular Safety of Metoclopramide Compared to Domperidone: A Population-Based Cohort Study. J Can Assoc Gastroenterol. 2020 Dec 18;4(5):e110-e119. doi: 10.1093/jcag/gwaa041. eCollection 2021 Oct.
5. **Muanda FT**, Blake PG, Weir MA, Bathini L, Chauvin K, Dixon SN, McArthur E, Sontrop JM, Moist L, Kim RB, Garg AX. Association of Baclofen With Falls and Fractures in Patients With CKD. Am J Kidney Dis. 2021 Feb 10:S0272-6386(21)00081-0. doi: 10.1053/j.ajkd.2020.12.017. Online ahead of print.
6. **Muanda FT**, Weir MA, Bathini L, Clemens KK, Perkovic V, Sood MM, McArthur E, Sontrop JM, Kim RB, Garg AX. Higher-Dose Sitagliptin and the Risk of Congestive Heart Failure in Older Adults with CKD. Clin J Am Soc Nephrol. 2020 Dec 7;15(12):1728-1739. doi: 10.2215/CJN.08310520. Epub 2020 Nov 25.
7. Rej S, Herrmann N, Gruneir A, McArthur E, Jeyakumar N, **Muanda FT**, Harel Z, Dixon S, Garg AX. Association of Lithium Use and a Higher Serum Concentration of Lithium With the Risk of Declining Renal Function in Older Adults: A Population-Based Cohort Study. J Clin Psychiatry. 2020 Aug 18;81(5):19m13045. doi: 10.4088/JCP.19m13045.
8. Chauvin KJ, Blake PG, Garg AX, Weir MA, Bathini L, Dixon SN, McArthur E, Sontrop JM, Moist L, Kim RB, **Muanda FT**. Baclofen has a risk of encephalopathy in older adults receiving dialysis [published online ahead of print, 2020 May 22]. Kidney Int. 2020;S0085-2538(20)30552-4.
9. Iskander C, Cherney DZ, Clemens KK, Dixon SN, Harel Z, Jeyakumar N, McArthur E, **Muanda FT**, Parikh CR, Paterson JM, Tangri N, Udell JA, Wald R, Garg AX. Use of sodium-glucose cotransporter-2 inhibitors and risk of acute kidney injury in older adults with diabetes: a population-based cohort study. CMAJ. 2020;192(14):E351-E360.
10. **Muanda FT**, Weir MA, Bathini L, Blake PG, Chauvin K, Dixon SN, McArthur E, Sontrop JM, Moist L, Garg AX. Association of Baclofen With Encephalopathy in Patients With Chronic Kidney Disease [published online ahead of print, 2019 Nov 9]. JAMA. 2019;322(20):1987-1995.
11. Iskander C, McArthur E, Nash DM, Gandhi-Banga S, Weir MA, **Muanda FT**, Garg AX. Identifying Ontario geographic regions to assess adults who present to hospital with laboratory-defined conditions: a descriptive study [published correction appears in CMAJ Open. 2020 Feb 24;8(1):E120]. CMAJ Open. 2019;7(4):E624-E629. Published 2019 Oct 22.
12. Bathini L, Jandoc R, Kuwornu P, McArthur E, Weir MA, Sood MM, Battistella M, **Muanda FT**, Liu A, Jain AK, Garg AX. Clinical Outcomes of Failing to Dose-Reduce Cephalosporin Antibiotics in Older Adults with CKD. Clin J Am Soc Nephrol. 2019;14(2):197-205.

13. Yau K, Burneo JG, Jandoc R, McArthur E, **Muanda FT**, Parikh CR, Wald R, Weir MA, Garg AX. Population-Based Study of Risk of AKI with Levetiracetam. Clin J Am Soc Nephrol. 2019;14(1):17-26.

Fatemeh Ahmadi, MD

2020 – Present, MSc Epidemiology and Biostatistics, Western University

Scholarships, Grants, Awards and Podium Presentations:

1. Award: Drug Safety and Effectiveness Cross-Disciplinary Training Program (DSECT), 2021, \$10,000

Publications:

1. Muanda FT, Sood MM, Weir MA, Sontrop JM, **Ahmadi F**, Yoo E, Kim RB, Silverman MS, Knoll GA, Garg AX. Association of Higher-Dose Fluoroquinolone Therapy With Serious Adverse Events in Older Adults With Advanced Chronic Kidney Disease. JAMA Netw Open. 2022 Aug 1;5(8):e2224892. doi: 10.1001/jamanetworkopen.2022.24892. PMID: 35917124.
2. Muanda FT, Weir MA, **Ahmadi F**, Sontrop JM, Cowan A, Fleet JL, Blake PG, Garg AX. Higher-Dose Gabapentinoids and the Risk of Adverse Events in Older Adults With CKD: A Population-Based Cohort Study. Am J Kidney Dis. 2022 Jul;80(1):98-107.e1.
3. Muanda FT, Weir MA, **Ahmadi F**, McArthur E, Sontrop JM, Kim RB, Garg AX. Digoxin Dosing and the Risk of Toxicity in Older Adults With CKD. Am J Kidney Dis. 2022 Jun;79(6):912-917.



Internal Medicine Resident and Nephrology Fellow Research Rotations

Marko Mrkobrada, MD, FRCPC

2010, Faculty General Internist, Western University
Fall 2006, PGY-2, 2-month Internal Medicine Rotation

Scholarships, Grants, Awards and Podium Presentations

1. Investigator: Preoperative Medications and Acute Kidney Injury: A VISION sub-study, Canadian Institutes of Health Research Operating grant, 2011-2013, \$119,920

Publications

1. **Mrkobrada M**, Thiessen-Philbrook H, Haynes RB, Iansavichus AV, Rehman F, Garg AX. Need for Quality Improvement in Renal Systematic Reviews. Clin J Am Soc Nephrol. 2008 Jul;3(4):1102-14.



Nausheen Siddiqui, MD, FRCPC

Staff nephrologist at Toronto East Health Network (Michael Garron Hospital)
2010 – 2012, Nephrology Fellowship, University of Toronto
2008, PGY-2, 2-month Internal Medicine Research Rotation

Scholarships, Grants, Awards and Podium Presentations

1. Award: Trends on Acute Dialysis after Major Elective Surgery, Department of Medicine Research Day, Best poster, 2010

Publications

1. **Siddiqui NF**, Coca SG, Devereaux PJ, Jain AK, Li L, Luo J, Parikh CR, Paterson M, Thiessen-Philbrook H, Wald R, Walsh M, Whitlock R, Garg AX. Secular trends in acute dialysis following major elective surgery, 1995 to 2009. CMAJ. 2012 Aug 7;184(11):1237-45



2. Molnar AO, Coca SG, Devereaux PJ, Jain AK, Kitchlu A, Luo J, Parikh CR, Paterson JM, **Siddiqui N**, Wald R, Walsh M, Garg AX. Statin use associates with a lower incidence of acute kidney injury after major elective surgery. J Am Soc Nephrol. 2011 May;22(5):939-46

Amber Molnar, MD, FRCPC

July 2015, Assistant Professor, Division of Nephrology, McMaster University
July 2013, Research Fellowship, University of Ottawa
July 2011, Nephrology Fellowship, University of Ottawa
Fall 2009, PGY-2, 2-month Internal Medicine Resident Research Rotation



Scholarships, Grants, Awards and Podium Presentations

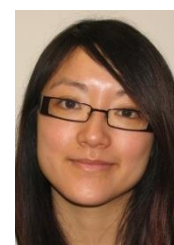
1. Investigator: Preoperative Medications and Acute Kidney Injury: A VISION sub-study, Canadian Institutes of Health Research Operating grant, 2011-2013, \$119,920
2. Award: Statin Use Associates with a Lower Incidence of Acute Kidney Injury after Major Elective Surgery, CSCI Resident Research Prize, 2011, \$1,000.
3. Award: Statin Use Associates with a Lower Incidence of Acute Kidney Injury After Major Elective Surgery, PSI Foundation Resident Research Prize, 2011, \$2,000.
4. Award and Podium Presentation: Statin Use and Acute Kidney Injury After Major Elective Surgery Canadian Society of Nephrology, Trainee Abstract Award, May 2010
5. Podium Presentation: Statin Use and Acute Kidney Injury, American Society of Nephrology Renal Week, 2010

Publications

1. **Molnar AO**, Garg AX. ACP Journal Club. Early high-dose rosuvastatin prevented contrast-induced acute kidney injury in non-ST-elevation ACS. Ann Intern Med. 2014 May 20;160(10).
2. **Molnar AO**, Parikh CR, Coca SG, Thiessen-Philbrook H, Koyner JL, Shlipak MG, Lee Myers M, Garg AX; TRIBE-AKI Consortium. Association Between Preoperative Statin Use and Acute Kidney Injury Biomarkers in Cardiac Surgical Procedures. Ann Thorac Surg. 2014 Jun;97(6):2081-7.
3. Shah M, Jain AK, Brunelli SM, Coca SG, Devereaux PJ, James MT, Luo J, **Molnar AO**, Mrkobrada M, Pannu N, Parikh CR, Paterson M, Shariff S, Wald R, Walsh M, Whitlock R, Wijeyesundera DN, Garg AX. Association between angiotensin converting enzyme inhibitor or angiotensin receptor blocker use prior to major elective surgery and the risk of acute dialysis. BMC Nephrol. 2014 Apr 2;15:53.
4. Walsh M, Srinathan SK, McAuley DF, Mrkobrada M, Levine O, Ribic C, **Molnar AO**, Dattani ND, Burke A, Guyatt G, Thabane L, Walter SD, Pogue J, Devereaux PJ. The statistical significance of randomized controlled trial results is frequently fragile: a case for a Fragility Index. J Clin Epidemiol. 2014 Jun;67(6):622-8.
5. **Molnar AO**, Parikh CR, Sint K, Coca SG, Koyner J, Patel UD, Butrymowicz I, Shlipak M, Garg AX. Association of postoperative proteinuria with AKI after cardiac surgery among patients at high risk. Clin J Am Soc Nephrol. 2012 Nov;7(11):1749-60
6. **Molnar AO**, Coca SG, Devereaux PJ, Jain AK, Kitchlu A, Luo J, Parikh CR, Paterson JM, Siddiqui N, Wald R, Walsh M, Garg AX. Statin use associates with a lower incidence of acute kidney injury after major elective surgery. J Am Soc Nephrol. 2011 May;22(5):939-46

Ying Zhao, MD, FRCPC

2014 – 2016 Brigham and Women's Hospital Postdoctoral Sleep Research Fellowship
2014 – 2016 Master of Public Health (MPH) Harvard University
2013 – 2014, Sleep Medicine Fellowship, Western University
2011 - 2013, Respiriology Fellowship, Western University
Summer 2009, PGY-2, 2 month Internal Medicine Research Rotation



Scholarships, Grants, Awards and Podium Presentations

1. Podium Presentation: New Fibrate Use and Acute Renal Outcomes in Elderly Adults: A Population-Based Study, American College of Physicians Annual Meeting, 2012
2. Award: Fibrate Use and Acute Renal Outcomes, Canadian Society for Clinical Investigation / Canadian Institutes of Health Research Resident Award, 2012, \$2,000 (top Western University resident research project; all years, all disciplines)

3. Podium Presentation: Fibrate Use and Acute Kidney Injury in Older Adults, American Society of Nephrology Renal Week, 2010

Publications

1. **Zhao YY**, Weir MA, Manno M, Cordy P, Gomes T, Hackam DG, Juurlink DN, Mamdani M, Moist L, Parikh CR, Paterson JM, Wald R, Yao Z, Garg AX. New fibrate use and acute renal outcomes in elderly adults: a population-based study. Ann Intern Med 2012 Apr 17;156(8):560-9

Andrew Shih, MD, FRCPC

Assistant Professor, University of British Columbia, Hematopathologist
Hematology Fellowship
2010, PGY-2, 2-month Internal Medicine Research Rotation

Scholarships, Grants, Awards and Podium Presentations

1. Award: Oral Bisphosphonate Use and Acute Kidney Injury, PSI Foundation Resident Research Prize, 2012, \$1,000
2. Award and Podium Presentation: Oral bisphosphonates in the elderly and acute kidney injury, Canadian Society of Nephrology, 3rd Place Trainee Abstract Award, May 2012

Publications

1. **Shih AWY**, Weir MA, Clemens K, Yao Z, Gomes T, Mamdani M, Juurlink D, Hird A, Hodsmann A, Parikh CR, Wald R, Cadarette SM, Garg AX. Oral bisphosphonates in the elderly and acute kidney injury: a population-based study Kidney Int. 2012 Oct;82(8):903-8



Amit Patel, MD, FRCPC

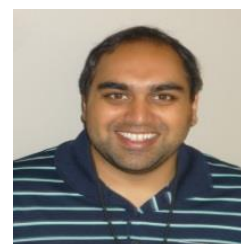
Staff Nephrologist, Windsor
July 2013 – June 2016, Nephrology Fellowship, Western University
2011, PGY-2, 2-month Internal Medicine Research Rotation

Scholarships, Grants, Awards and Podium Presentations

1. Award: PSI Foundation Resident Research Prize 2013, \$1000

Publications

1. Fleet JL, Shariff SZ, Bailey DG, Gandhi S, Juurlink DN, Nash DM, Mamdani M, Gomes T, **Patel AM**, Garg AX. Comparing two types of macrolide antibiotics for the purpose of assessing population-based drug interactions. BMJ Open. 2013 Jul 11;3(7).
2. **Patel AM**, Shariff S, Bailey DG, Juurlink DN, Gandhi S, Mamdani M, Gomes T, Fleet J, Hwang YJ, Garg AX. Statin toxicity from macrolide antibiotic coprescription: a population-based cohort study. Ann Intern Med. 2013 Jun 18;158(12):869-76



Varun Dev, BHSc, MD, FRCPC

Staff Nephrologist, Humber
July 2014 – June 2016, Nephrology Fellow, Western University
July 2011 – June 2014, Internal Medicine Resident, Western University

Scholarships, Grants, Awards and Podium Presentations

1. Podium presentation: What is the Evidence for Dose Adjusting Antidepressants in Chronic Kidney Disease? Canadian Society for Nephrology Annual Meeting 2013

Publications

1. **Dev V**, Dixon SN, Fleet JL, Gandhi S, Gomes T, Harel Z, Jain AK, Shariff SZ, Tawadrous D, Weir MA, Garg AX. Higher antidepressant dose and major adverse outcomes in moderate chronic kidney disease: a retrospective population-based study. BMC Nephrology 2014 15:79.



Anna Mathew, MD, FRCPC

Associate Professor, Nephrologist, McMaster University
2008 – 2010, Nephrology Fellowship, Western University
Fall 2006, PGY-2, 2-month Internal Medicine Research Rotation



Scholarships, Grants, Awards and Podium Presentations

1. Investigator: Detection of Acute Kidney Injury after Abdominal Aortic Aneurysm Repair: Role of New Biomarkers, Canadian Institutes of Health Research Operating Grant, Clinical Investigation, Circulatory and Respiratory Health, 2009-2012, \$364,929
2. Investigator: Renal function as a predictor of vascular events in non-cardiac surgery patients cohort evaluation (Re-VISION), Canadian Institutes of Health Research Operating Grant, Clinical Investigation, Circulatory and Respiratory Health, 2009-2012, \$249,184
3. Investigator: The role of carotid endarterectomy in patients with chronic kidney disease, Physicians' Services Incorporated Foundation, Resident Research Award, 2008-2009, \$9,000
4. Podium Presentation: Patients with Chronic Kidney Disease and Internal Carotid Artery Stenosis Benefit from Endarterectomy, American Society of Nephrology Renal Week, 2008
5. Best Poster: Patients with Chronic Kidney Disease and Internal Carotid Artery Stenosis Benefit from Endarterectomy, Department of Medicine Research Day, Western University, 2008
6. Research Award: Chronic Kidney Disease and Postoperative Mortality, Physicians' Services Incorporated Foundation, Resident Research, 2008
7. Research Award: Patients with Chronic Kidney Disease and Internal Carotid Artery Stenosis Benefit from Endarterectomy, Canadian Society for Clinical Investigation, 2008 (top resident research project for Western University, all disciplines)
8. Research Award: Chronic Kidney Disease and Postoperative Mortality, Canadian Society for Clinical Investigation: 2008 (top resident research project for all Canadian institutions, all disciplines)

Publications

1. **Mathew A**, Eliasziw M, Devereaux P, Merino J, Barnett H, **Garg A**. Benefit of Carotid Endarterectomy in Patients with Chronic Kidney Disease. J Am Soc Nephrol 2010 Jan;21(1):145-52
2. **Mathew A**, Garg AX. A single measure of urinary neutrophil gelatinase-associated lipocalin was accurate for diagnosing acute kidney injury. Evid Based Med 2009;14(1):20 (an editorial)
3. Nevis IF, **Mathew A**, Novick R, Parikh CR, Devereaux PJ, Natarajan MK, Iansavichus AV, Cuerden M, Garg AX. Optimal Method of Revascularization in Patients on Dialysis: Systematic Review. Clin J Am Soc Nephrol. 2009 Feb;4(2):369-78
4. **Mathew A**, Devereaux PJ, O'Hare A, Tonelli M, Thiessen-Philbrook H, Nevis IF, Iansavichus AV, Garg AX. Chronic kidney disease and postoperative mortality: a systematic review and meta-analysis. Kidney Int. 2008 May;73(9):1069-81

Elena Qirjazi, BEng, MD, FRCPC

Assistant Professor, University of Calgary
2014 – 2018, Nephrology Fellowship, Western University
2014 Internal Medicine Research Rotation



Publications

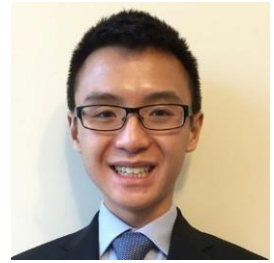
1. **Qirjazi E**, McArthur E, Nash DM, et al. Risk of Ventricular Arrhythmia with Citalopram and Escitalopram: A Population-Based Study. PLoS One. 2016;11(8):e0160768. Published 2016 Aug 11.

Kevin Yau MD, FRCPC

2019 – 2021 Nephrology Fellowship, University of Toronto
2014 Internal Medicine Research Rotation

Publications:

1. **Yau K**, Burneo JG, Jandoc R, McArthur E, Muanda FT, Parikh CR, Wald R, Weir MA, Garg AX. Population-Based Study of Risk of AKI with Levetiracetam. Clin J Am Soc Nephrol. 2019;14(1):17-26.



Shawna Mann MD, FRCPC, MHSc

2017 – 2020 MHSc Health Administration, University of Toronto
2018 – 2019 Renal Transplant Clinical Fellowship University of British Columbia
2016 – 2018 Nephrology Fellowship, Western University

Scholarships, Grants, Awards and Podium Presentations

1. Investigator: Post-Transplant Care in Ontario, Ontario Renal Network, \$60,000

Publications:

1. **Mann S**, Naylor KL, McArthur E, Kim SJ, Knoll G, Zaltzman J, Treleaven D, Ouedraogo A, Jevnikar A, Garg AX. Projecting the Number of Posttransplant Clinic Visits With a Rise in the Number of Kidney Transplants: A Case Study From Ontario, Canada. Can J Kidney Health Dis. 2020 Jan 25;7:2054358119898552.



Medical Students

Carlos Garcia-Ochoa, MD

2019 General Surgery Residency, University of Ottawa
2017-2019 Research Placement, Victoria Hospital

Publications:

1. **Garcia-Ochoa C**, Feldman LS, Nguan C, Monroy-Caudros M, Arnold JB, Barnieh L, Boudville N, Cuerden MS, Dipchand C, Gill JS, Karpinski M, Klarenbach S, Knoll G, Lok CE, Miller M, Prasad GVR, Sontrop JM, Storsley L, Garg AX. Impact of Perioperative Complications on Living Kidney Donor Health-Related Quality of Life and Mental Health: Results From a Prospective Cohort Study. Can J Kidney Health Dis. 2021 Aug 11;8:20543581211037429.
2. Habbous S, **Garcia-Ochoa C**, Brahm G, Nguan C, Garg AX. Can Split Renal Volume Assessment by Computed Tomography Replace Nuclear Split Renal Function in Living Kidney Donor Evaluations? A Systematic Review and Meta-Analysis. Can J Kidney Health Dis. 2019;6:2054358119875459. Published 2019 Sep 19.
3. **Garcia-Ochoa C**, Feldman LS, Nguan C, Monroy-Cuadros M, Arnold J, Boudville N, Cuerden M, Dipchand C, Eng M, Gill J, Gourlay W, Karpinski M, Klarenbach S, Knoll G, Lentine KL, Lok CE, Luke P, Prasad GVR, Sener A, Sontrop JM, Storsley L, Treleaven D, Garg AX; Donor Nephrectomy Outcomes Research (DONOR) Network. Perioperative Complications During Living Donor Nephrectomy: Results From a Multicenter Cohort Study. Can J Kidney Health Dis. 2019;6:2054358119857718. Published 2019 Jul 18.
4. Habbous S, McArthur E, Dixon SN, McKenzie S, **Garcia-Ochoa C**, Lam NN, Lentine KL, Dipchand C, Litchfield K, Begen MA, Sarma S, Garg AX. Initiating Maintenance Dialysis Before Living Kidney Donor Transplantation When a Donor Candidate Evaluation Is Well Underway. Transplantation. 2018;102(7):e345-e353.

Michael Beyea, PhD, MD

July 2014 – , Emergency Residency, Western University
Sept 2010 – 2014, Medical Student, University of Toronto
2009 – 2010, Clinical Research Placement



Scholarships, Grants, Awards and Podium Presentations

1. Investigator: Acute kidney injury from antiviral drugs for herpes infections. Canadian Institutes of Health Research, Health Services Research, 2011-2013, \$99,209
2. Investigator: Severe Electrolyte Disorders from Common Medications: Risk and Mitigation. Canadian Institutes of Health Research, Health Services Research, 2011-2013, \$139,828
3. Investigator: Beta blockers, dialyzability and outcomes, Canadian Institutes of Health Research, Health Services Research, 2011-2012, \$59,956

Publications

1. Weir MA, Dixon SN, Fleet JL, Roberts MA, Hackam DG, Oliver MJ, Suri RS, Quinn RR, Ozair S, **Beyea MM**, Kitchlu A, Garg AX. Beta blocker dialyzability and mortality in older patients receiving hemodialysis. 2014 J Am Soc Nephrol, 2014 Oct. 30.
2. Lam NN, Weir MA, Yao Z, Blake PG, **Beyea MM**, Gomes T, Gandhi S, Mamdani M, Wald R, Parikh CR, Hackam DG, Garg AX. Risk of acute kidney injury from oral acyclovir: a population-based study. Am J Kidney Dis. 2013 May;61(5):723-9
3. Gandhi S, Shariff SZ, **Beyea MM**, Weir MA, Hands T, Kearns G, Garg AX. Identifying geographical regions serviced by hospitals to assess laboratory-based outcomes. BMJ Open 2013;3:e001921
4. Weir MA, **Beyea MM**, Gomes T, Juurlink DN, Muhammad M, Blake PG, Wald R, Garg AX. Orlistat and Acute Kidney Injury: An analysis of 953 patients. Arch Intern Med. 2011 Apr 11;171(7):703-4.

Yiannis Iordanous, BSc, MD

Assistant Professor, Staff Ophthalmologist, Western University
2011, Ophthalmology Residency, Western University
Summer 2007 – 2008, Medical Student, Summer Research Training Program



Scholarships, Grants, Awards and Podium Presentations

1. Award: Dr. Glen S. Wither Award, Summer Research Training Program, 2008

Publications

1. **Iordanous Y**, Seymour N, Young A, Johnson J, Iansavichus AV, Cuerden MS, Gill JS, Poggio E, Garg AX. Recipient Outcomes for Expanded Criteria Living Kidney Donors: The Disconnect Between Current Evidence and Practice. Am J Transplant. 2009;9(7):1558-73

Patricia Hizo-Abes, BHSc, MD

Family Medicine Residency, Staff Physician Windsor
Summer 2010 – 2011, Medical Student, Summer Research Training Program
Summer 2009, 4th year undergraduate, Clinical Research Studentship
Summer 2008, 3rd year undergraduate, Clinical Research Studentship



Scholarships, Grants, Awards and Podium Presentations

1. Scholarship: Canadian Institutes of Health Research, Graduate Award, 2009 (declined)
2. Award: Cardiovascular disease after acute gastrointestinal infection: Walkerton Health Study, Dr. Glen S. Wither Award for Research, 2011
3. Award: Heart and Stroke Foundation Summer Medical Studentship National Research Grant, 2011
4. Scholarship: R. John and Agnes M. Adams Summer Medical Student Scholarship National Research Scholarship, 2011, \$5,000
5. Award: Western University Summer Research Training Program Scholarship, 2010
6. Award: Mach-Gaensslen Foundation National Research Grant, 2010

Publications

1. **Hizo-Abes P**, Clark WF, Sontrop JM, Young A, Huang A, Thiessen-Philbrook H, Austin PC, Garg AX; Walkerton Health Study Investigators. Cardiovascular disease after Escherichia coli O157:H7 gastroenteritis. CMAJ. 2013 Jan 8;185(1):E70-7
2. **Hizo-Abes P**, Young A, Reese P, McFarlane P, Wright L, Cuerden M, Garg AX. Attitudes to Sharing Personal Health Information in Living Kidney Donation. Clin J Am Soc Nephrol. 2010 Apr;5(4):717-22 [Selected for press release by American Society of Nephrology]
3. Young A, Kim SJ, Gibney EM, Parikh CR, Cuerden MS, Horvat LD, **Hizo-Abes P**, Garg AX. Discovering Misattributed Paternity in Living Kidney Donation: Prevalence, Preference and Practice. Transplantation. 2009 May 27; 87 (10); 1429-35

Abhijat Kitchlu, MD, FRCPC

2019, Assistant Professor, Nephrologist, University of Toronto
2014, Nephrology Fellowship, University of Toronto
2011, Internal Medicine Resident, University of Toronto
2009, 2nd year medical student, Summer Research Opportunities Program



Publications

1. Weir MA, Dixon SN, Fleet JL, Roberts MA, Hackam DG, Oliver MJ, Suri RS, Quinn RR, Ozair S, Beyea MM, **Kitchlu A**, Garg AX. Beta blocker dialyzability and mortality in older patients receiving hemodialysis. 2014 J Am Soc Nephrol. 2014 Oct. 30.
2. Wald R, Shariff SZ, Adhikari NK, Bagshaw SM, Burns KE, Friedrich JO, Garg AX, Harel Z, **Kitchlu A**, Ray JG. The association between renal replacement therapy modality and long-term outcomes among critically ill adults with acute kidney injury: a retrospective cohort study. Crit Care Med. 2014 Apr;42(4):868-77.
3. Bajaj RR, Wald R, Hackam DG, Gomes T, Perl J, Juurlink DN, Manno M, Garg AX, **Kitchlu A**, Mamdani MM, Yan AT. Use of Angiotensin-converting enzyme inhibitors or Angiotensin receptor blockers and cardiovascular outcomes in chronic dialysis patients: a population-based cohort study. Arch Intern Med. 2012 Apr 9;172(7):591-3
4. **Kitchlu A**, Clemens K, Gomes T, Hackam DG, Juurlink DN, Mamdani M, Manno M, Oliver MJ, Quinn RR, Suri RS, Wald R, Yan AT, Garg AX. Beta-blockers and cardiovascular outcomes in dialysis patients: a cohort study in Ontario, Canada. Nephrol Dial Transplant. 2012 Apr;27(4):1591-8
5. Molnar A, Coca S, Devereaux PJ, Jain A, **Kitchlu A**, Luo J, Parikh C, Paterson JM, Siddiqui N, Wald R, Walsh M, Garg AX, Statin Use is Associated With Less Acute Kidney Injury After Major Elective Surgery. J Am Soc Nephrol. 2011 May;22(5):939-46

Christopher Lee, BSc, MD

Emergency Physician, Vancouver General Hospital
2011, Emergency Residency, Western University
Summer 2009, Summer Research Opportunities Program



Publications

1. Iansavichus AV, Haynes RB, **Lee CW**, Wilczynski NL, McKibbin A, Shariff SZ, Blake PG, Lindsay RM, Garg AX. Dialysis search filters for PubMed, Ovid MEDLINE, and Embase databases. Clin J Am Soc Nephrol. 2012 Oct;7(10):1624-31
2. Hildebrand AM, Iansavichus AV, **Lee CW**, Haynes RB, Wilczynski NL, McKibbin KA, Hladunewich MA, Clark WF, Cattran DC, Garg AX. Glomerular disease search filters for PubMed, Ovid Medline, and Embase: a development and validation study. BMC Med Inform Decis Mak. 2012 Jun 6;12:49
3. **Lee C**, Iansavichus AV, Haynes B, Shariff S, Wilczynski N, McKibbin A, Rehman F, Garg AX. Kidney Transplantation Search Filters for PubMed, Ovid Medline, and Embase. Transplantation 2012 Mar 15;93(5):460-6

Davy Tawadrous, MD

2019, Assistant Professor, University of Toronto
2014, Emergency Medicine Residency, Western University
Summer 2012, 2nd year medical student clinical research studentship
Summer 2011, 1st year medical student, clinical research studentship
2010, 4th year Clinical Research Studentship



Scholarships, Grants, Awards and Podium Presentations

1. Award: 2011 Schulich Summer Research Training Program Award
2. Award: 2010 Health Council of Canada's Health Innovation Award
3. Scholarship: 2010 Frederick Banting and Charles Best Canada Graduate Scholarship (Declined)
4. Scholarship: 2010 Ontario Graduate Scholarship (Declined)

Publications

1. **Tawadrous D**, Dixon S, Shariff SZ, Fleet J, Gandhi S, Jain AK, Weir MA, Gomes T, Garg AX. Altered Mental Status in Older Adults with Histamine2-Receptor Antagonists: A Population-based Study. Euro J Intern Med. 2014 Oct;25(8):701-9.
2. **Tawadrous D**, Shariff SZ, Haynes BR, Iansavichus AV, Jain AK, Garg AX. Use of Clinical Decision Support Systems for Kidney-Related Drug Prescribing: A Systematic Review. Am J Kidney Dis. 2011 Dec;58(6):903-1.

Sundus Ozair, BSc

Family Medicine Residency
Summer 2011, 2nd year medical student, Clinical Research Studentship



Publications

1. Weir MA, Dixon SN, Fleet JL, Roberts MA, Hackam DG, Oliver MJ, Suri RS, Quinn RR, **Ozair S**, Beyea MM, Kitchlu A, Garg AX. Beta blocker dialyzability and mortality in older patients receiving hemodialysis. J Am Soc Nephrol. 2015 Apr;26(4):987-96.
2. Fleet JL, Weir MA, McArthur E, **Ozair S**, Devereaux PJ, Roberts MA, Jain AK, Garg AX. Kidney Function and Population-Based Outcomes of Initiating Oral Atenolol Versus Metoprolol Tartrate in Older Adults. Am J Kidney Dis. 2014 Dec;64(6):883-91

Andrew Song

Sept 2011, Medical Student, Western University

Publications

1. Weir MA, Fleet JL, Vinden C, Shariff SZ, Liu K, **Song H**, Jain AK, Gandhi S, Clark WF, Garg AX. Hyponatremia and sodium picosulfate bowel preparations in older adults. Am J Gastroenterol. 2014 May;109(5):686-94.



Jennifer Ehiwario, BScN

2017 – Present, Student Researcher, ICES Western
1997 – 2021 Medical Student- The Royal College of Surgeons Ireland-MUB



Kianna Chauvin

2017 – 2021 Medical Student, Western University

Summer 2019

Publications:

1. Muanda FT, Blake PG, Weir MA, Bathini L, **Chauvin K**, Dixon SN, McArthur E, Sontrop JM, Moist L, Kim RB, Garg AX. Association of Baclofen With Falls and Fractures in Patients With CKD. Am J Kidney Dis. 2021 Feb 10:S0272-6386(21)00081-0. doi: 10.1053/j.ajkd.2020.12.017. Online ahead of print.
2. **Chauvin KJ**, Blake PG, Garg AX, et al. Baclofen has a risk of encephalopathy in older adults receiving dialysis [published online ahead of print, 2020 May 22]. Kidney Int. 2020;S0085-2538(20)30552-4.
3. Muanda FT, Weir MA, Bathini L, et al. Association of Baclofen With Encephalopathy in Patients With Chronic Kidney Disease [published online ahead of print, 2019 Nov 9]. JAMA. 2019;322(20):1987-1995.

Katryna Stronks

Summer 2020 – Schulich Research Opportunities Program, Western University

Summer 2021 – Schulich Research opportunities Program, Western University



Ruth Neumann

Summer 2020 – Schulich Research Opportunities Program, Western University

Summer 2021 – Schulich Research Opportunities Program, Western University



Akshay Varghese

Medical Student, Laurentian University

Summer Research Student 2019

Publications:

1. **Varghese A**, Lacson E Jr, Sontrop JM, Acedillo RR, Al-Jaishi AA, Anderson S, Bagga A, Bain KL, Bennett LL, Bohm C, Brown PA, Chan CT, Cote B, Dev V, Field B, Harris C, Kalatharan S, Kiaii M, Molnar AO, Oliver MJ, Parmar MS, Schorr M, Shah N, Silver SA, Smith DM, Sood MM, St Louis I, Tennankore KK, Thompson S, Tonelli M, Vorster H, Waldvogel B, Zacharias J, Garg AX; Dialysate Magnesium (Dial-Mag) Investigators. A Higher Concentration of Dialysate Magnesium to Reduce the Frequency of Muscle Cramps: A Narrative Review. Can J Kidney Health Dis. 2020 Oct 22;7:2054358120964078. doi: 10.1177/2054358120964078. eCollection 2020.



Undergraduate Students

Katie Clarke, BSc

Summer 2005, 4th year undergraduate, Clinical Research Studentship

Publications

1. **Clarke KS**, Klarenbach S, Vlaicu S, Yang RC, Garg AX; The direct and indirect economic costs incurred by living kidney donors: A systematic review. Nephrol Dial Transplant. 2006 Jul;21(7):1952-60 [Editorial: Nephrol Dial Transplant 2006;21(7):1764-5]



Erin Moody, BHSc

2009, MD, Western University
Summer 2006, 3rd year undergraduate, Clinical Research Studentship

Publications

1. **Moody EM**, Clemens KK, Storsley L, Waterman A, Parikh CR, Garg AX. Improving on-line information for potential living kidney donors. *Kidney Int.* 2007 May;71(10):1062-70



Justin Okell, BSc

Summer 2006, 3rd year undergraduate, Clinical Research Studentship

Publications

1. Garg AX, Salvadori M, **Okell JM**, Thiessen-Philbrook HR, Suri RS, Filler G, Moist L, Matsell D, Clark WF. Albuminuria and estimated GFR 5 years after Escherichia coli O157 hemolytic uremic syndrome: an update. *Am J Kidney Dis.* 2008 Mar;51(3):435-44



Laurie Waechter, BSc

Summer 2006, 3rd year undergraduate, Clinical Research Studentship

Publications

1. Khanna R, **Waechter L**, Sargeant J, Clark WF, Garg AX. Environmental prevention of human disease from verocytotoxin-producing Escherichia coli. *Nephrol Dial Transplant.* 2008;23(6):1819-22



Nicole Seymour, BMSc

Summer 2008, 3rd year undergraduate, Clinical Research Studentship

Scholarships, Grants, Awards and Podium Presentations

1. Award: YMCA's 2009 Women of Excellence Honouree

Publications

1. Iordanous Y, **Seymour N**, Young A, Johnson J, Iansavichus AV, Cuerden MS, Gill JS, Poggio E, Garg AX. Recipient Outcomes for Expanded Criteria Living Kidney Donors: The Disconnect Between Current Evidence and Practice. *Am J Transplant.* 2009;9(7):1558-73



Manisha Sickand, BHSc

2010, Medical Student, University of Ottawa
Summer 2008, 3rd year undergraduate, Clinical Research Studentship

Scholarships, Grants, Awards and Podium Presentations

1. Podium Presentation: Reimbursement of living organ donors, American Society of Transplantation Renal Week, 2008
2. Scholarship: Julie-Payett NSERC Scholarship, 2008, \$25,000

Publications

1. **Sickand M**, Cuerden M, Klarenbach S, Ojo A, Parikh C, Boudville N, Garg A. Reimbursing Live Organ Donors for Incurred Non-Medical Expenses: A Global Perspective on Policies and Programs. *Am J Transplant* 2009 Dec;9(12):2825-36



Puiyan Wong, BSc

Sept 2011, Medical Student, Queen's University
Jan 2009 – August 2010, Clinical Research Studentship

Scholarships, Grants, Awards and Podium Presentations

1. **Contributor:** Curcumin to prevent perioperative complications after elective abdominal aortic aneurysm repair, Canadian Institutes of Health Research, Operating Grant, Food and Nutrition, 2011, \$328,530



Shayna Bejaimal, BSc

Sept 2011, Medical Student, University of Toronto; followed by Internal Medicine Residency
Jan 2009 – Aug 2010, Clinical Research Studentship

Scholarships, Grants, Awards and Podium Presentations

1. **Investigator:** Comparing PubMed and Google Scholar on evidence retrieval. Physicians' Services Incorporated Foundation, \$58,522

Publications

1. Shariff SZ, **Bejaimal SA**, Sontrop JM, Iansavichus AV, Haynes RB, Weir MA, Garg AX. Retrieving Clinical Evidence: A Comparison of PubMed and Google Scholar for Quick Clinical Searches. J Med Internet Res. 2013 Aug 15;15(8):e164
2. **Bejaimal SA**, Haynes RB, Shariff S, Garg AX. Finding and evaluating renal evidence: bridging the knowledge gap. Adv Chronic Kidney Dis. 2012 Jan;19(1):5-10
3. Shariff SZ, **Bejaimal SAD**, Sontrop JM, Iansavichus AV, Weir MA, Haynes RB, Speechley MR, Thind A, Garg AX. Searching for medical information online: A survey of Canadian nephrologists. J Nephrol. 2011 Nov-Dec;24(6):723-32
4. Vlasschaert MEO, **Bejaimal SAD**, Hackam DG, Quinn R, Cuerden MS, Oliver MJ, Iansavichus AV, Sultan N, Mills A, Garg AX. Validity of administrative database coding for kidney disease: A systematic review. Am J Kidney Dis. 2011 Jan;57(1):29-43



Amanda Hird, BSc

Sept 2010, Medical Student, University of Toronto; Urology Residency
Summer 2010, 4th year undergraduate, Clinical Research Studentship

Publications

1. Shih AW, Weir MA, Clemens KK, Yao Z, Gomes T, Mamdani MM, Juurlink DN, **Hird A**, Hodsmann A, Parikh CR, Wald R, Cadarette SM, Garg AX. Oral bisphosphonate use in the elderly is not associated with acute kidney injury. Kidney Int. 2012 Oct;82(8):903-8

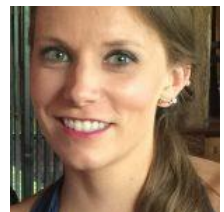


Jamie Fleet, BHSc

Resident, Physical Medicine and Rehabilitation, McMaster University
Sept 2013, Medical Student, McMaster University
May 2011 – Aug 2013, Clinical Research Studentship

Publications

1. **Fleet JL**, McArthur E, Patel A, Weir MA, Montero-Odasso M, Garg AX. Risk of rhabdomyolysis with donepezil compared with rivastigmine or galantamine: a population-based cohort study. CMAJ. 2019 Sep 16;191(37):E1018-E1024.
2. **Fleet JL**, Dixon SN, Kuwornu PJ, Dev VK, Montero-Odasso M, Burneo J, Garg AX. Gabapentin dose and the 30-day risk of altered mental status in older adults: A retrospective population-based study. PLoS One. 2018 Mar 14;13(3):e0193134.
3. Al-Jaishi AA, Moist LM, Oliver MJ, Nash DM, **Fleet JL**, Garg AX, Lok CE. Validity of administrative database code algorithms to identify vascular access placement, surgical revisions, and secondary patency. J Vasc Access. 2018 Nov;19(6):561-568.



4. Li DQ, Kim RB, McArthur E, **Fleet JL**, Hegele RA, Shah BR, Weir MA, Molnar AO, Dixon S, Tu JV, Anand S, Garg AX. Statin Safety in Chinese: A Population-Based Study of Older Adults. *PLoS One*. 2016 Mar 8;11(3):e0150990.
5. Clemens KK, McArthur E, Dixon SN, **Fleet JL**, Hramiak I, Garg AX. The Hypoglycemic Risk of Glyburide (Glibenclamide) Compared with Modified-Release Glipizide. *Can J Diabetes*. 2015 Mar 31.
6. Li DQ, Kim R, McArthur E, **Fleet JL**, Bailey DG, Juurlink D, Shariff SZ, Gomes T, Mamdani M, Gandhi S, Dixon S, Garg AX. Risk of adverse events among older adults following co-prescription of clarithromycin and statins not metabolized by cytochrome P450 3A4. *CMAJ*. 2015 Feb 17;187(3):174-80.
7. Clemens KK, McArthur E, **Fleet JL**, Hramiak I, Garg AX. The risk of pancreatitis with sitagliptin therapy in older adults: a population-based cohort study. *CMAJ Open*. April 23, 2015.
8. Shah S, McArthur E, Farag A, Nartey M, **Fleet JL**, Knoll GA, Kim SJ, Garg AX, Jain AK. Risk of hospitalization for community acquired pneumonia with Renin-Angiotensin blockade in elderly patients: a population-based study. *PLoS One*. 2014 Oct 29;9(10)
9. Weir MA, Dixon SN, **Fleet JL**, Roberts MA, Hackam DG, Oliver MJ, Suri RS, Quinn RR, Ozair S, Beyea MM, Kitchlu A, Garg AX. β -Blocker Dialyzability and Mortality in Older Patients Receiving Hemodialysis. *J Am Soc Nephrol*. 2014 October.
10. Lazo-Langner A, **Fleet JL**, McArthur E, Garg AX. Rivaroxaban vs. low molecular weight heparin for the prevention of venous thromboembolism after hip or knee arthroplasty: a cohort study. *J Thromb Haemost*. 2014 Oct;12(10):1626-35
11. Lam NN, **Fleet JL**, McArthur E, Blake PG, Garg AX. Higher dose versus lower dose of antiviral therapy in the treatment of herpes zoster infection in the elderly: a matched retrospective population-based cohort study. *BMC Pharmacol Toxicol*. 2014 Sep 4;15:48
12. Dev V, Dixon SN, **Fleet JL**, Gandhi S, Gomes T, Harel Z, Jain AK, Shariff SZ, Tawadrous D, Weir MA, Garg AX. Higher antidepressant dose and major adverse outcomes in moderate chronic kidney disease: a retrospective population-based study. *BMC Nephrol*. 2014;15:79.
13. Tawadrous D, Dixon S, Shariff SZ, **Fleet J**, Gandhi S, Jain AK, Weir MA, Gomes T, Garg AX. Altered mental status in older adults with histamine2-receptor antagonists: A population-based study. *Eur J Intern Med*. 2014 Oct;25(8):701-9.
14. Weir MA, Dixon SN, **Fleet JL**, Roberts MA, Hackam DG, Oliver MJ, Suri RS, Quinn RR, Ozair S, Beyea MM, Kitchlu A, Garg AX. Beta blocker dialyzability and mortality in older patients receiving hemodialysis. 2014 *J Am Soc Nephrol* [In Press].
15. **Fleet JL**, Weir MA, McArthur E, Ozair S, Devereaux PJ, Roberts MA, Jain AK, Garg AX. Kidney Function and Population-Based Outcomes of Initiating Oral Atenolol Versus Metoprolol Tartrate in Older Adults. 2014 *Am J Kidney Dis*. 2014 Jul 16.
16. Weir MA, **Fleet JL**, Vinden C, Shariff SZ, Liu K, Song H, Jain AK, Gandhi S, Clark WF, Garg AX. Hyponatremia and sodium picosulfate bowel preparations in older adults. *Am J Gastroenterol*. 2014 May;109(5):686-94.
17. **Fleet JL**, Shariff SZ, Bailey DG, Gandhi S, Juurlink DN, Nash DM, Mamdani M, Gomes T, Patel AM, Garg AX. Comparing two types of macrolide antibiotics for the purpose of assessing population-based drug interactions. *BMJ Open*. 2013 Jul 11;3(7)
18. **Fleet JL**, Dixon SN, Shariff SZ, Quinn RR, Nash DM, Harel Z, Garg AX. Detecting chronic kidney disease in population-based administrative databases using an algorithm of hospital encounter and physician claim codes. *BMC Nephrol*. 2013 Apr 5;14:81.
19. Gandhi S, **Fleet JL**, Bailey DG, McArthur E, Wald R, Rehman F, Garg AX. Calcium-channel blocker-clarithromycin drug interactions and acute kidney injury. *JAMA*. 2013;310:2544-2553
20. **Fleet JL**, Shariff SZ, Gandhi S, Weir MA, Jain AK, Garg AX. Validity of the International Classification of Diseases 10th revision code for hyperkalaemia in elderly patients at presentation to an emergency department and at hospital admission. *BMJ Open*. 2012 Dec 28;2(6)
21. Gandhi S, Shariff SZ, **Fleet JL**, Weir MA, Jain AK, Garg AX. Validity of the International Classification of Diseases 10th revision code for hospitalisation with hyponatraemia in elderly patients. *BMJ Open*. 2012 Dec 28;2(6)
22. Hwang YJ, Shariff SZ, Gandhi S, Wald R, Clark E, **Fleet JL**, Garg AX. Validity of the International Classification of Diseases, Tenth Revision code for acute kidney injury in elderly patients at presentation to the emergency department and at hospital admission. *BMJ Open*. 2012 Nov 29;2(6)

Jennie Pouget, BSc

Sept 2011, MD/PhD Program, University of Toronto
Summer 2010, 4th year undergraduate, Clinical Research Studentship

Scholarships, Grants, Awards and Podium Presentations

1. Investigator: Reduced kidney function and fragility fractures, Canadian Institutes of Health Research, Operating grant: CIB Clinical Investigation – B (Arthritis, Bone, Skin and Cartilage), 2011-2013, \$99,624

Publications

1. Naylor KL, McArthur E, Leslie WD, Fraser LA, Jamal SA, Cadarette SM, **Pouget JG**, Lok CE, Hodsman AB, Adachi JD, Garg AX. The three-year incidence of fracture in chronic kidney disease. *Kidney Int.* 2014 Jan 15.
2. Garg AX, **Pouget J**, Young A, Huang A, Boudville N, Hodsman A, Adachi JD, Leslie WD, Cadarette SM, Lok CE, Monroy-Cuadros M, Prasad GVR, Thomas SM, Naylor K, Treleavan D. Fracture Risk in Living Kidney Donation. *Am J Kidney Dis*, 2012;59(6):770-776



Amanda Rosenblum, BHSc

Sept 2011 Medical Student, McMaster University; Family Medicine / Palliative Care
2009 – 2011, Clinical Research Placement

Scholarships, Grants, Awards and Podium Presentations

1. Investigator: Organ Donor Registries: A Global Scoping Review, Canadian Institutes of Health Research, Knowledge synthesis grant, 2010-2011, \$49,957

Publications

1. Li AH, **Rosenblum AM**, Nevis IF, Garg AX. Adolescent classroom education on knowledge and attitudes about deceased organ donation: a systematic review. *Pediatr Transplant.* 2013 Mar;17(2):119-28
2. **Rosenblum AM**, Li AH, Roels L, Stewart B, Prakash V, Beitel J, Young K, Shemie S, Nickerson P, Garg AX. Worldwide variability in deceased organ donation registries. *Transpl Int.* 2012 Aug;25(8):801-11
3. **Rosenblum AM**, Horvat LD, Siminoff LA, Prakash V, Beitel J, Garg AX. The authority of next-of-kin in explicit and presumed consent systems for deceased organ donation: An analysis of 54 Nations. *Nephrol Dial Transplant.* 2012 Jun;27(6):2533-46



Daniel Li, BSc

Fall 2014, MD Program, University of Toronto; Ophthalmology Residency, McGill
Summer 2014, 3rd year undergraduate, Clinical Research Studentship
Summer 2013, 2nd year undergraduate, Clinical Research Studentship

Publications

1. **Li DQ**, Kim RB, McArthur E, Fleet JL, Hegele, RA, Shah BR, Weir MA, Molnar AO, Dixon S, Tu, JV, Anand S, Garg AX. Statin Safety in Chinese: A Population-Based Study of Older Adults. *PLoS One.* 2016;11(3):e0150990. Published 2016 Mar 8.
2. **Li DQ**, Kim R, McArthur E, Fleet JL, Bailey DG, Juurlink D, Shariff SZ, Gomes T, Mamdani M, Gandhi S, Dixon S, Garg AX. Risk of adverse events among older adults following co-prescription of clarithromycin and statins not metabolized by cytochrome P450 3A4. *CMAJ.* 2015 Feb 17;187(3):174-80.



Namisha Singh, BSc

September 2014, Medical Student, Schulich School of Medicine and Dentistry; Internal Medicine Residency
May 2013- August 2014, Clinical Research Studentship

Publications

1. **Singh N**, Gandhi S, McArthur E, Moist L, Jain AK, Liu AR, Sood MM, Garg AX. Kidney function and the use of nitrofurantoin to treat urinary tract infections in older women. *CMAJ.* 2015 Jun 16;187(9):648-56.



Vivian Tan

2020 – Medical School Dalhousie University
Summer 2015, 2nd year undergraduate, Clinical Research Studentship
Summer 2014, 1st year undergraduate, Clinical Research Studentship



Scholarships, Grants, Awards and Podium Presentations

1. Scholarship: ODPRN Student Training Program, May – August, 2014, \$10,000

Publications:

1. **Tan VS**, Garg AX, McArthur E, Patzer RE, Gander J, Roshanov PS, Kim SJ, Yohanna S, McCallum MK, Naylor KL. Predicting 3-Year Survival in Patients Receiving Maintenance Dialysis: An External Validation of iChoose Kidney in Ontario, Canada. Can J Kidney Health Dis. 2018;5:2054358118799693. Published 2018 Oct 4.
2. Naylor KL, Knoll GA, Shariff SZ, McArthur E, Garg AX, Van Walraven C, Austin PC, McCallum MK, Quinn RR, **Tan VS**, Kim SJ. Socioeconomic Status and Kidney Transplant Outcomes in a Universal Healthcare System: A Population-based Cohort Study. Transplantation. 2019;103(5):1024-1035.
3. Perl J, McArthur E, **Tan VS**, Nash DM, Garg AX, Harel Z, Li AH, Sood MM, Ray JG, Wald R. ESRD among Immigrants to Ontario, Canada: A Population-Based Study. J Am Soc Nephrol. 2018;29(7):1948-1959.
4. **Tan VS**, Nash DM, McArthur E, Jain AK, Garg AX, Juurlink DN, Weir MA. Impact of Injectable Furosemide Hospital Shortage on Congestive Heart Failure Outcomes: A Time Series Analysis. Can J Cardiol. 2017;33(11):1498-1504.
5. **Tan VS**, Garg AX, McArthur E, Lam NN, Sood MM, Naylor KL. The 3-Year Incidence of Gout in Elderly Patients with CKD. Clin J Am Soc Nephrol. 2017;12(4):577-584.

Justin Woo

Summer 2017, undergraduate summer studentship

Publications:

1. Habbous S, **Woo J**, Lam NN, Lentine KL, Cooper M, Reich M, Garg AX. The Efficiency of Evaluating Candidates for Living Kidney Donation: A Scoping Review. Transplant Direct. 2018;4(10):e394. Published 2018 Sep 20.



Zohra Bhimani, BHSc

Summer Research Student 2019, 2020
2019 – 2021 Bachelor of Laws, Queen Mary University of London, England
2015 – 2019 Bachelor of Health Sciences, Western University

Publications:

1. **Bhimani Z**, Garg AX, Bowmile M, Gibson JL, Cartagena RG, Lindsay C, Tangri N, Nash DN Using Prescribed Entity Data for Healthcare Delivery and Public Health Management, 40(1); page 43-55



Aakil Patel

Summer Research Student 2019, 2020
2018 – Bachelor of Health Sciences, Western University

Publications:

1. Lee EJ, **Patel A**, Acedillo RR, Bachynski JC, Barrett I, Basile E, Battistella M, Benjamin D, Berry D, Blake PG, Chan P, Bohm CJ, Clemens KK, Cook C, Dember L, Dirk JS, Dixon S, Fowler E, Getchell L, Gholami N, Goldstein C, Hahn E, Hogeterp B, Huang S, Hughes M, Jardine MJ, Kalatharan S, Kilburn S, Lacson E Jr, Leonard S, Liberty C, Lindsay C, MacRae JM, Manns BJ, McCallum J, McIntyre CW, Molnar AO, Mustafa RA, Nesrallah GE, Oliver MJ, Pandes M, Pandeya S, Parmar MS, Rabin EZ, Riley J, Silver SA, Sontrop JM, Sood MM, Suri RS, Tangri N, Tascona DJ, Thomas A, Wald R, Walsh M, Weijer C, Weir MA,

Vorster H, Zimmerman D, Garg AX. Cultivating Innovative Pragmatic Cluster-Randomized Registry Trials Embedded in Hemodialysis Care: Workshop Proceedings From 2018. Can J Kidney Health Dis. 2019;6:2054358119894394. Published 2019 Dec 26.

2. Fleet JL, McArthur E, **Patel A**, Weir MA, Montero-Odasso M, Garg AX. Risk of rhabdomyolysis with donepezil compared with rivastigmine or galantamine: a population-based cohort study. CMAJ. 2019;191(37):E1018-E1024.

Patricia Olar

Summer Research Student, 2022

2021 – Bachelor of Medical Sciences, Western University

